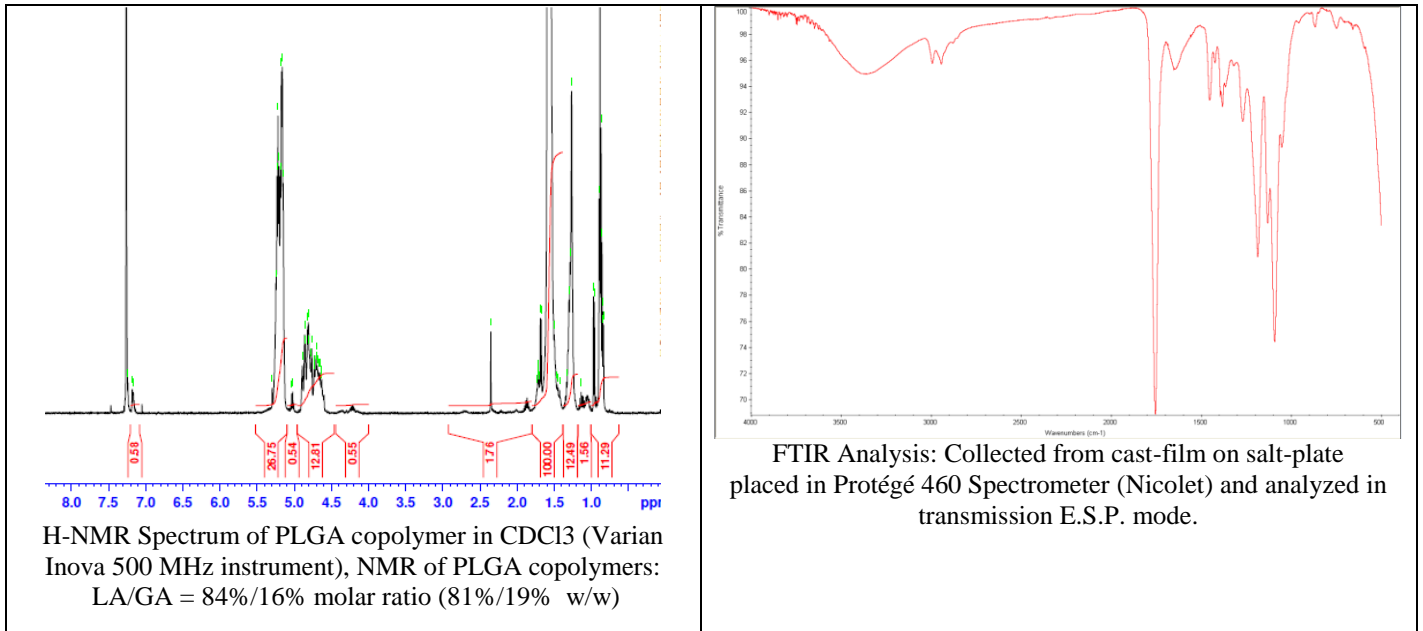


No. AP031

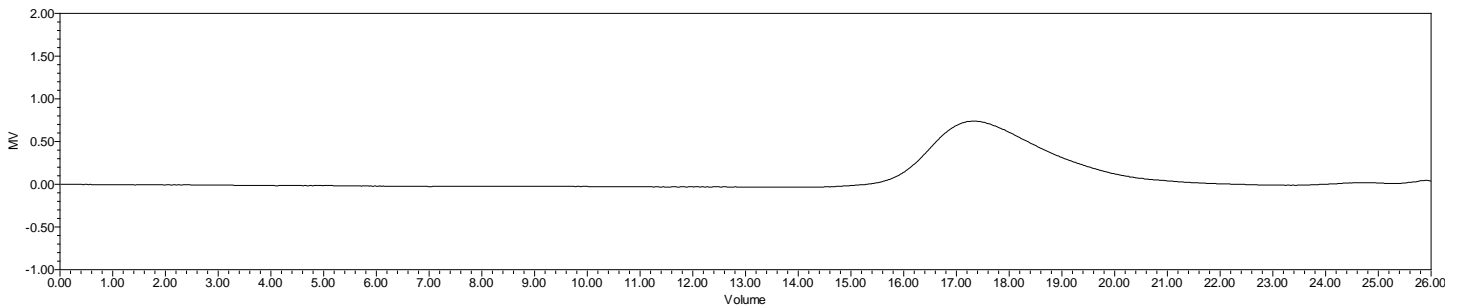
Certificate of Analysis



Product Name: Poly(lactic-co-glycolic acid) copolymers ester endcapped (85:15 LA:GA, M_n : 25,000-35,000 Da) (Lot#: 170706AMS-A)



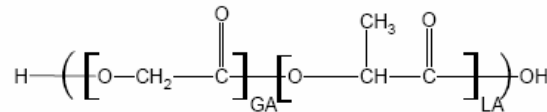
- GPC analysis of PLGA copolymers



Analysis Method: Waters Empower system with 1 ml/min THF flow across three GPC columns. Detection via refractory index, calibrated against polystyrene standards (*PEG standards).

Polymer	Mn (from GPC)	Mw (from GPC)	PDI
PLGA	29,707	48,664	1.64

- Structure of PLGA copolymers



Material provided for research use only. Not for human use.

PolySciTech Division of Akina, Inc. | 3495 Kent Avenue, West Lafayette, IN 47906

765-464-0390 | www.polysciotech.com

For research use only.