

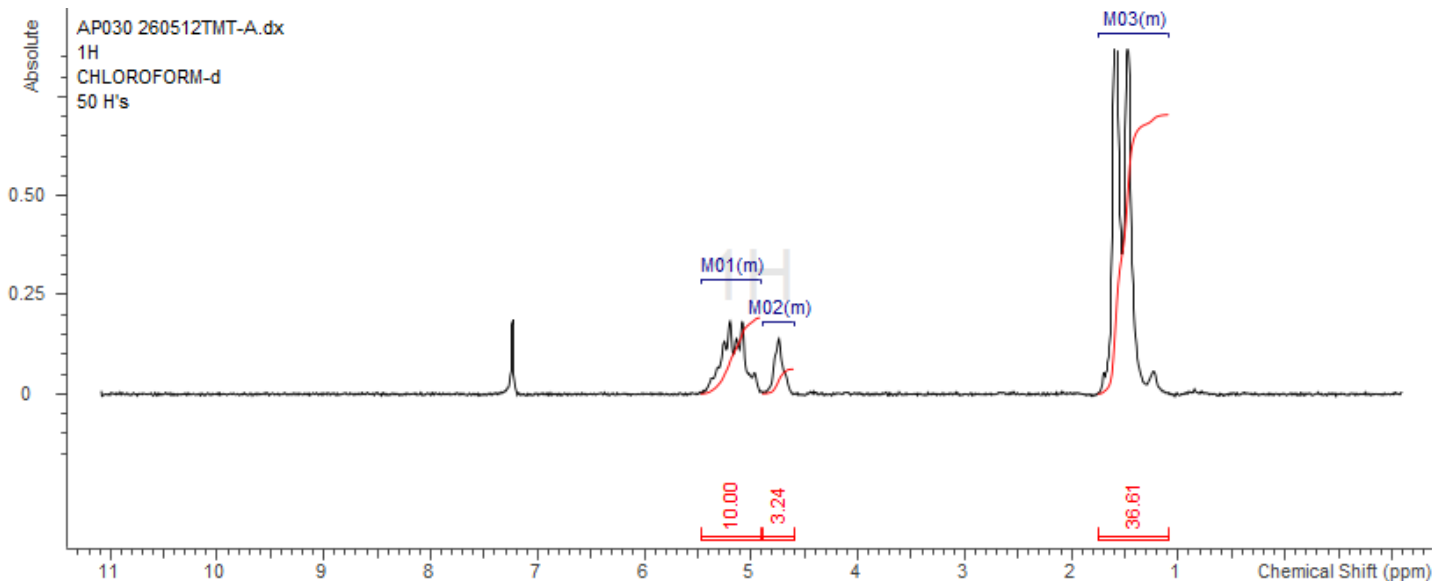
No. AP030

# Certificate of Analysis



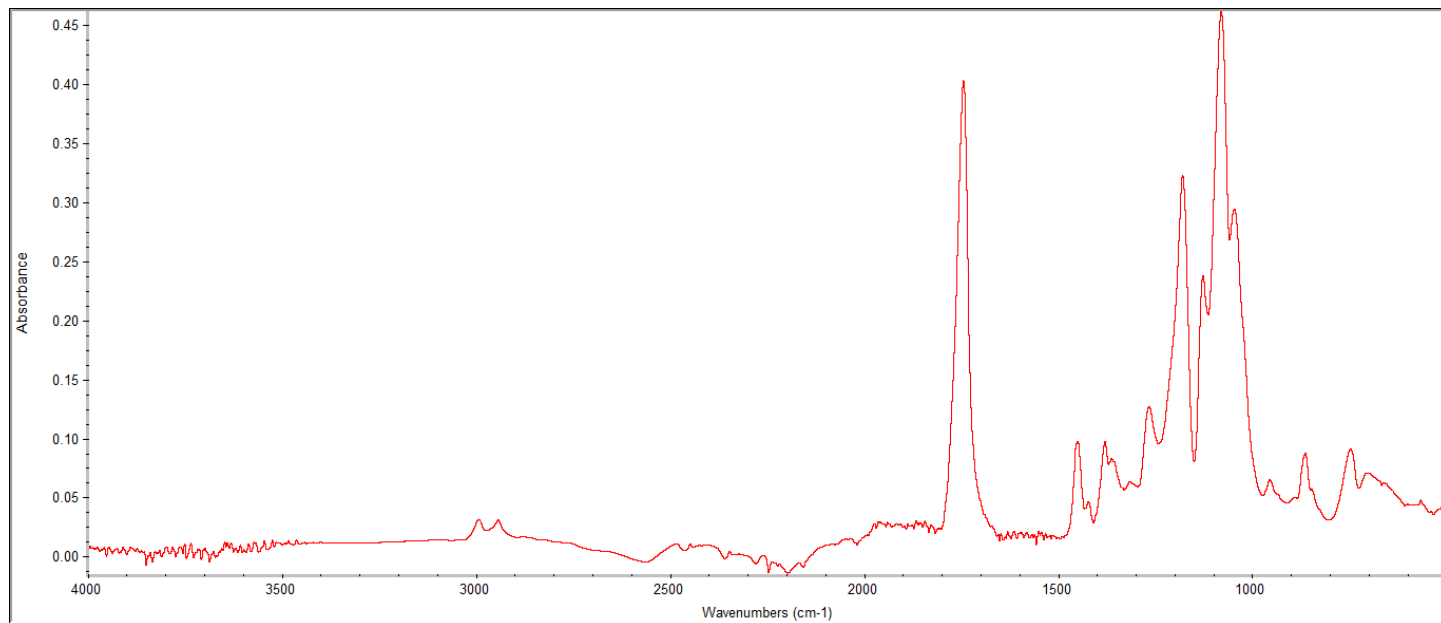
Product Name: Poly(lactide-co-glycolide) ester endcapped (85:15 LA:GA,  
 $M_n$ : 10,000 -15,000 Da) (Lot#: 260512TMT-A)

## H-NMR



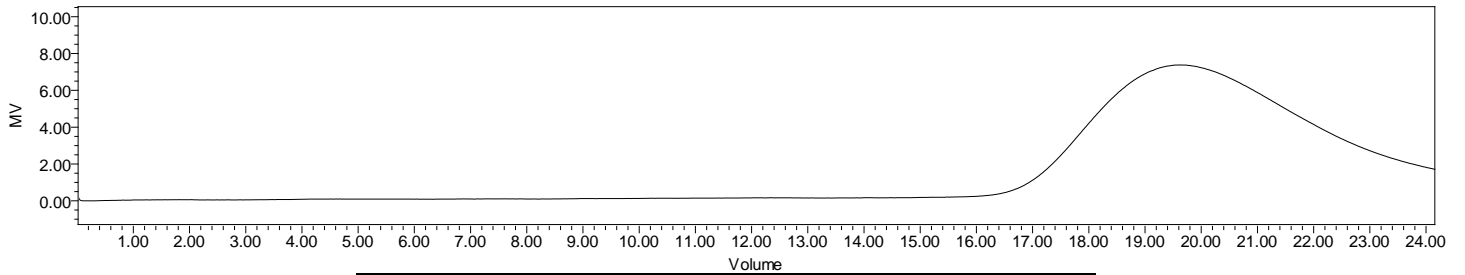
H-NMR Spectrum of copolymers in CDCl<sub>3</sub> (NMReady-60e, Nanalysis 60 MHz) NMR of PLGA copolymer: LA-GA =86%-14% molar ratio (LA:GA 88%:12% w:w)

## FTIR



FTIR Analysis: Collected from IS5 ID7-ATR spectrometer (Thermo Scientific) and analyzed in transmission mode.

# GPC-ES



Polymer	M <sub>n</sub> (from GPC)	M <sub>w</sub> (from GPC)	PDI
PLGA	14,998	25,730	1.72

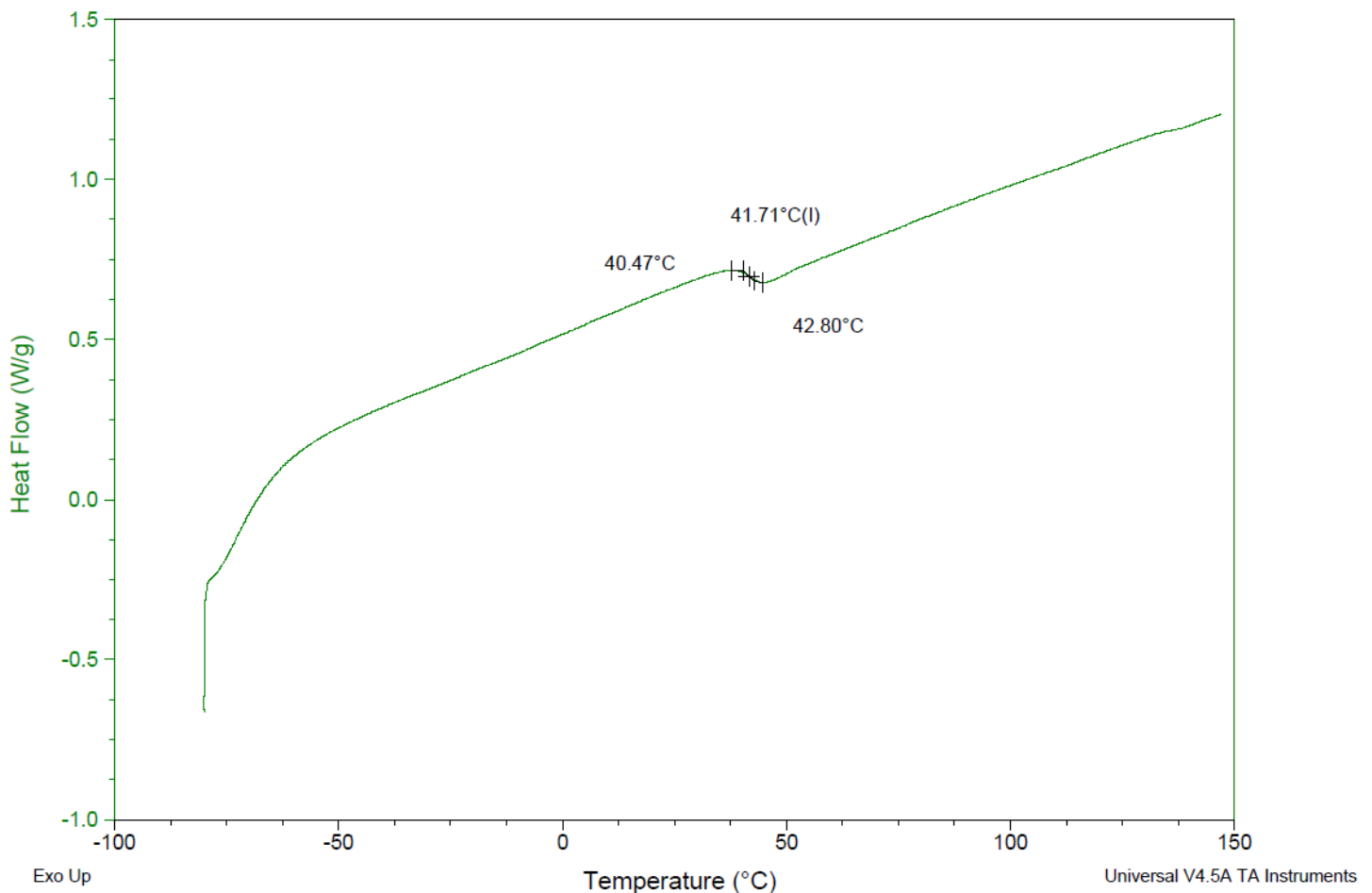
GPC-ES Analysis Method: Waters Breeze 2 system with 1 ml/min THF flow across three GPC columns. Detection via refractive index, calibrated against polystyrene standards.

# DSC

Sample: AP030 260512TMT-A  
Size: 2.3000 mg  
Method: Ramp

## DSC

File: C:\...\COA\AP030 260512TMT-A.001  
Run Date: 15-May-2026 12:42  
Instrument: DSC Q2000 V24.11 Build 124

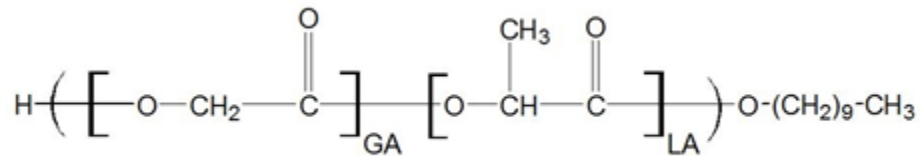


DSC Testing: 1-5 mg sample tested in crimped aluminum pan on a TA Instruments Model Q2000 with procedure equilibraion 100 °C, isothermal 5 minutes, equilibrate -80 °C, data on, ramp 10 °C/min to 150 °C. T<sub>g</sub> = 41.71 °C

## IV

**Inherent Viscosity:**  $0.138 \pm 0.010$  dL/g (calculated from kinematic viscosity at 2% w/v Acetone on Rheosense microVISC, n=3) at 25°C.

### Structure of copolymers



Approved By:  
*Amie Tyler*  
Quality Manager