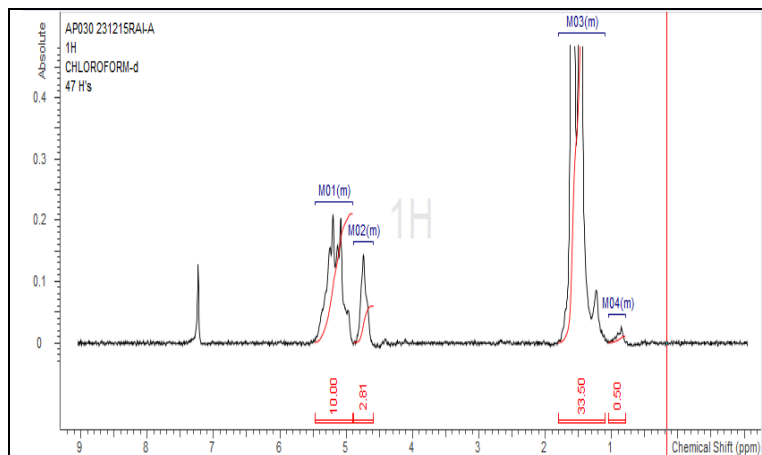


No. AP030

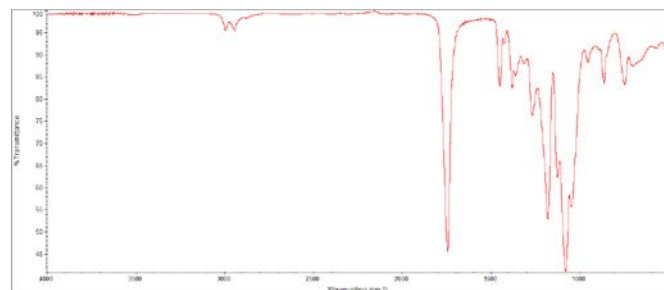
Certificate of Analysis



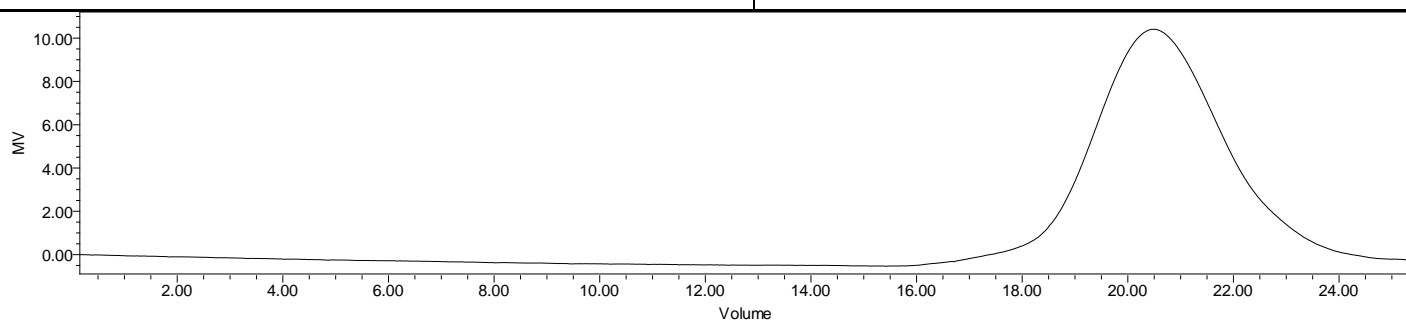
Product Name: Poly(lactide-co-glycolide) ester endcapped
(85:15 LA:GA, M_n : 10,000 -15,000 Da) (Lot#: 231215RAI-A)



H-NMR Spectrum of copolymers in $CDCl_3$ (NMReady-60e, Nanalysis 60 MHz) NMR of PLGA Copolymer: LA-GA =88%-12% molar ratio (LA:GA 90%-10% w-w)



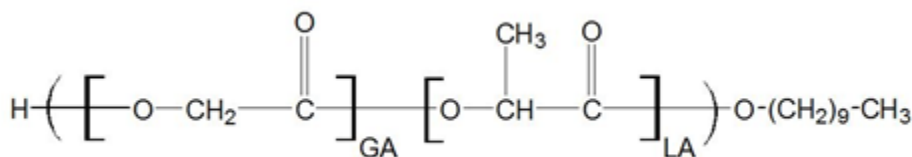
FTIR Analysis: Collected from IS5 ID7-ATR spectrometer (ThermoFisher) and analyzed in transmission mode.



GPC-ES Analysis Method: Waters Breeze 2 system with 1 ml/min THF flow across three GPC columns. Detection via refractive index, calibrated against polystyrene standards.

Polymer	M_n (from GPC)	M_w (from GPC)	PDI
PLGA	11,816	19,308	1.63

Structure of PLGA copolymers



Approved By:
Amie Tyler
Quality Manager