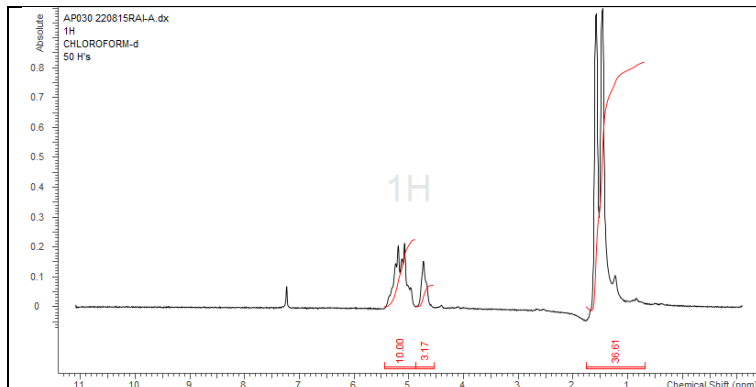


No. AP030

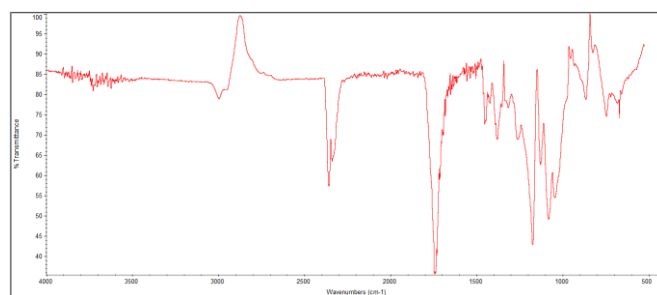
Certificate of Analysis



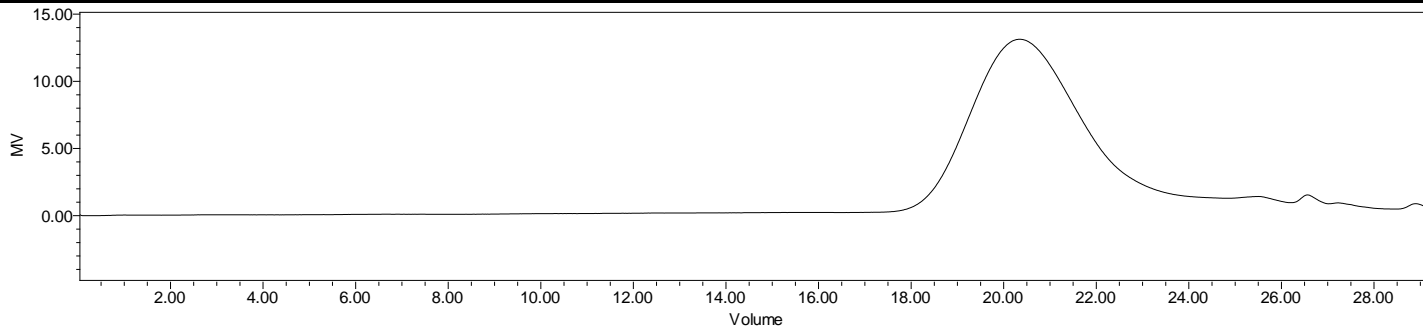
Product Name: Poly(lactide-co-glycolide) ester end capped
(85:15 LA:GA, M_n : 10,000 -15,000 Da) (Lot#: 220815BRD-A)



H-NMR Spectrum of copolymers in CDCl₃ (Bruker ≥ 300 MHz, PINMRF) NMR of PLGA copolymer: LA-GA =86%-14% molar ratio (LA:GA 89%-11% w-w)



FTIR Analysis: Collected from Nicolet Avatar 380 spectrometer with ATR Smart Orbit and analyzed in transmission mode.



GPC-ES Analysis Method: Waters Breeze 2 system with 1 ml/min THF flow across three GPC columns. Detection via refractive index, calibrated against polystyrene standards.

Polymer	M_n (from GPC)	M_w (from GPC)	PDI
PLGA	12,780	22,437	1.75

- Structure of PLGA copolymers

