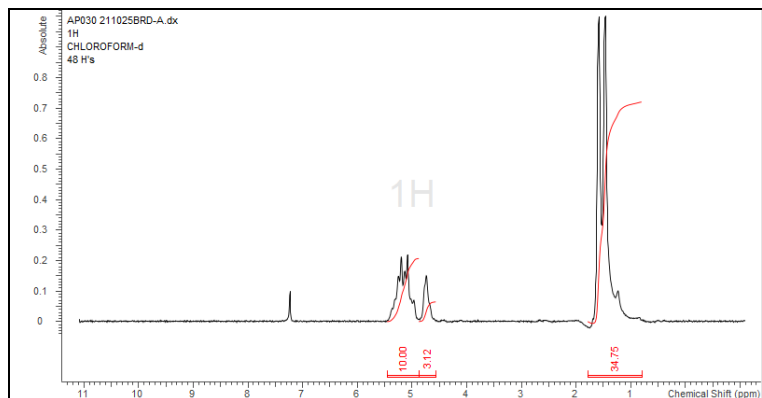


# No. AP030

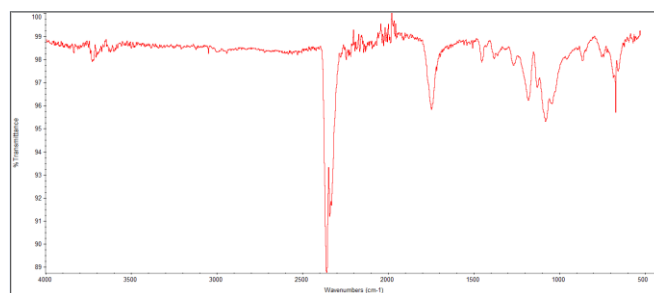
# Certificate of Analysis



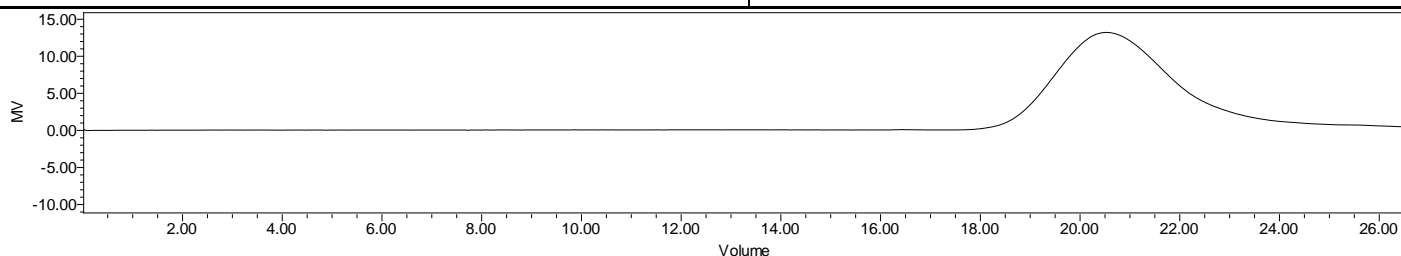
Product Name: Poly(lactide-co-glycolide) copolymers ester end capped  
(85:15 LA:GA,  $M_n$ : 10,000 -15,000 Da) (Lot#: 211025BRD-A)



H-NMR Spectrum of copolymers in CDCl<sub>3</sub> (NMReady-60e, Nanalysis 60 MHz) NMR of PLGA Copolymer: LA:GA 87%:13% molar ratio (LA:GA 89%:11% w-w)



FTIR Analysis: Collected from Nicolet Avatar 380 spectrometer with ATR Smart Orbit and analyzed in transmission mode.



GPC-ES Analysis Method: Waters Breeze 2 system with 1 ml/min THF flow across three GPC columns. Detection via refractive index, calibrated against polystyrene standards.

Polymer	$M_n$ (from GPC)	$M_w$ (from GPC)	PDI
PLGA	13,993	20,820	1.49

## • Structure of PLGA copolymers

