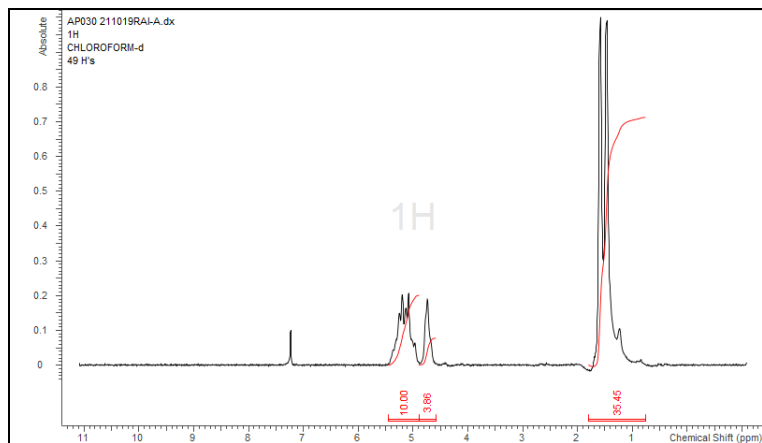


# No. AP030

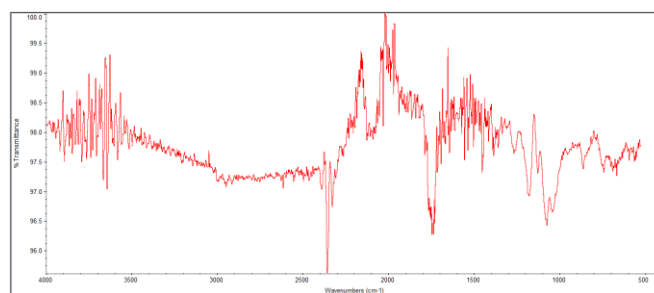
# Certificate of Analysis



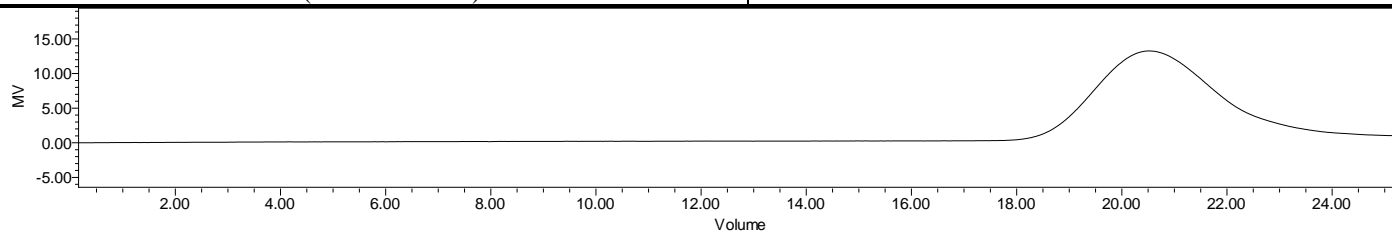
Product Name: Poly(lactide-co-glycolide) copolymers ester end capped  
(85:15 LA:GA) ( $M_n$ : 10,000 -15,000 Da) (Lot#: 211019RAI-A)



H-NMR Spectrum of copolymers in  $CDCl_3$  (NMReady-60e, Nanalysis 60 MHz) NMR of PLGA Copolymer: 84%-16% molar ratio (87%-13% w-w)



FTIR Analysis: Collected from Nicolet Avatar 380 spectrometer with ATR Smart Orbit and analyzed in transmission mode.



GPC-ES Analysis Method: Waters Breeze 2 system with 1 ml/min THF flow across three GPC columns. Detection via refractive index, calibrated against polystyrene standards.

Polymer	$M_n$ (from GPC)	$M_w$ (from GPC)	PDI
PLGA	13,971	20,600	1.47

- Structure of PLGA copolymers

