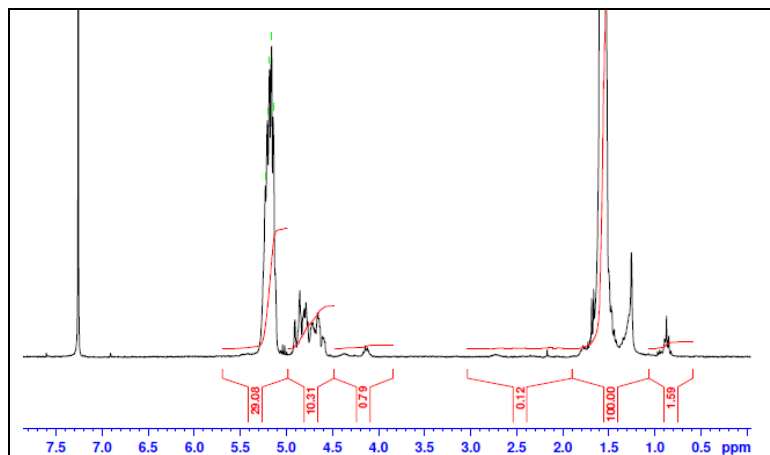


# No. AP030

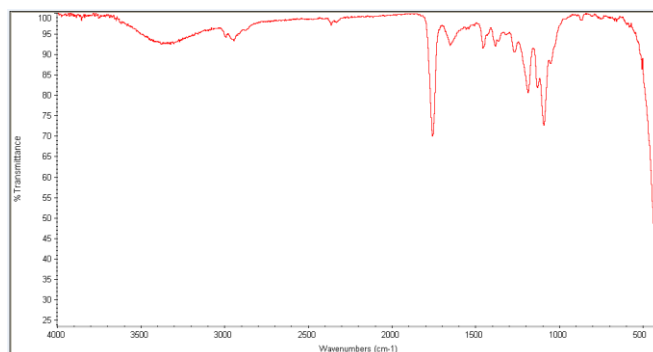
# Certificate of Analysis



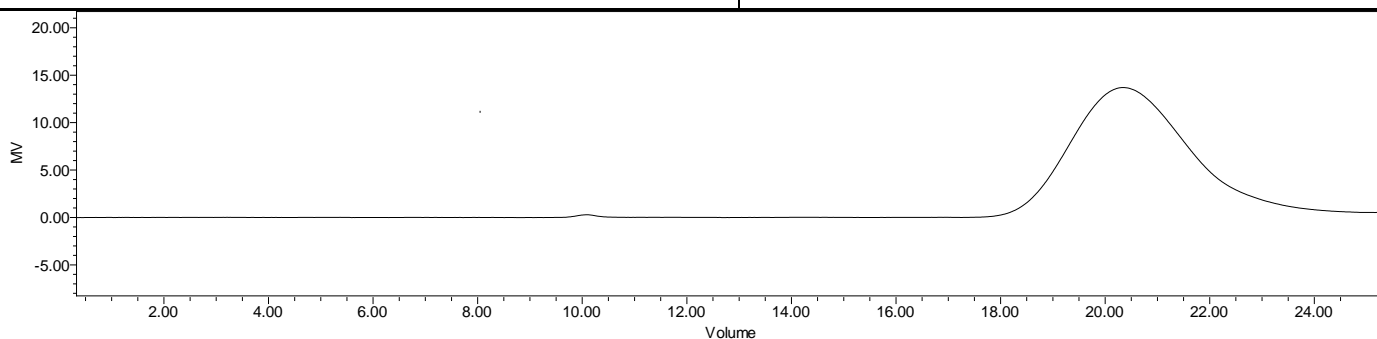
Product Name: Poly(lactide-co-glycolide) copolymers ester end capped  
(85:15 LA:GA) ( $M_n$ : 10,000 -15,000 Da) (Lot#: 180717NAE-A)



H-NMR Spectrum of copolymers in  $CDCl_3$  (Varian Inova 500 MHz instrument) NMR of PLGA copolymer: LA-GA = 85%-15% molar ratio (87%-13% w-w)



FTIR Analysis: Collected from cast-film on KBr salt-plate placed in Nicolet Avatar 320 spectrometer and analyzed in transmission mode.



GPC Analysis Method: Waters Breeze 2 system with 1 ml/min THF flow across three GPC columns. Detection via refractive index, calibrated against polystyrene standards.

Polymer	$M_n$ (from GPC)	$M_w$ (from GPC)	PDI
PLGA	14,035	20,967	1.49

- Structure of PLGA copolymers**

