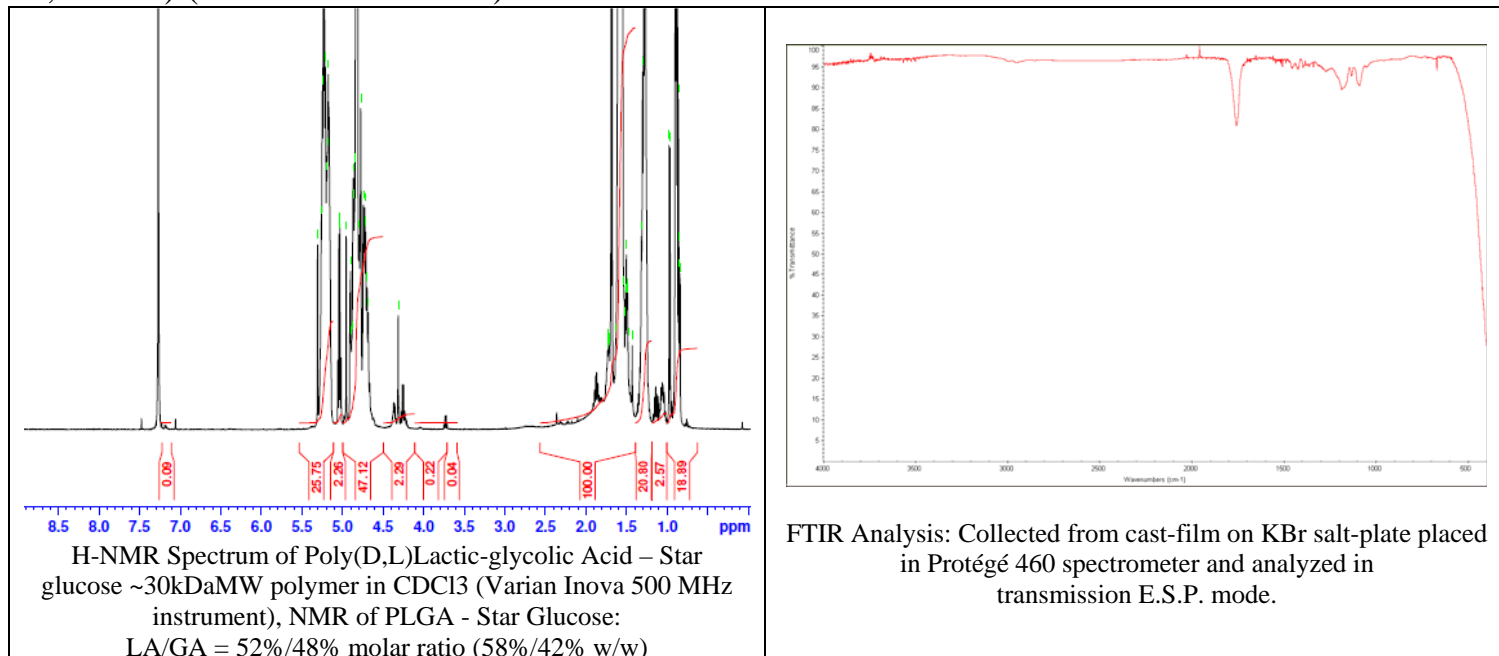
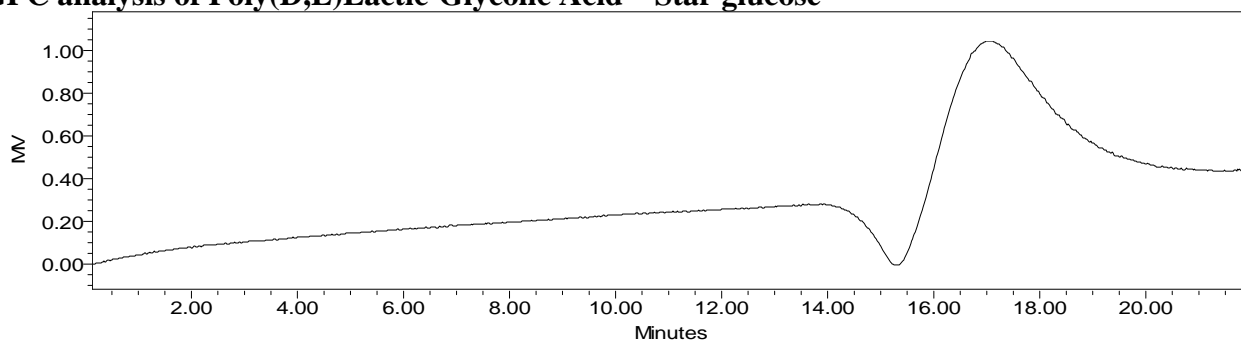


# No. AP029 Certificate of Analysis

Product Name: Poly((D,L)Lactide-co-glycolide) – Star glucose (50:50 LA:GA, MW~40,000-60,000 Da) (Lot# 60930ELH-A)



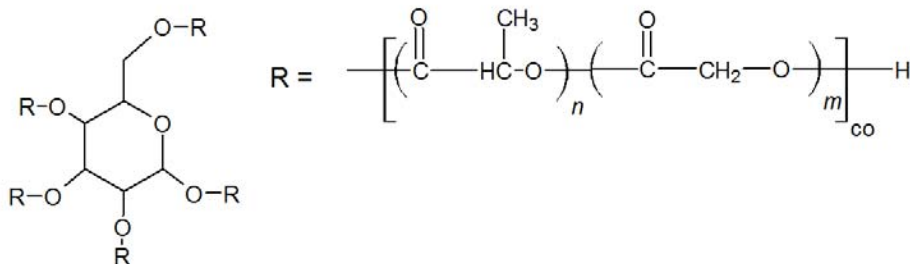
- GPC analysis of Poly(D,L)Lactic-Glycolic Acid – Star glucose**



Analysis Method: Waters Breeze 2 system with 1 ml/min DCM flow across three GPC columns (7.6 x 300 mm, mixed porosities). Detection via refractive index, calibrated against polystyrene standards.

Polymer	Mn (from GPC)	Mw (from GPC)	PDI
PLGA-Glucose	39,613	53,807	1.36

- Structure of Poly(D,L)Lactic-Glycolic Acid – Star glucose**



Material provided for research use only. Not for human use.