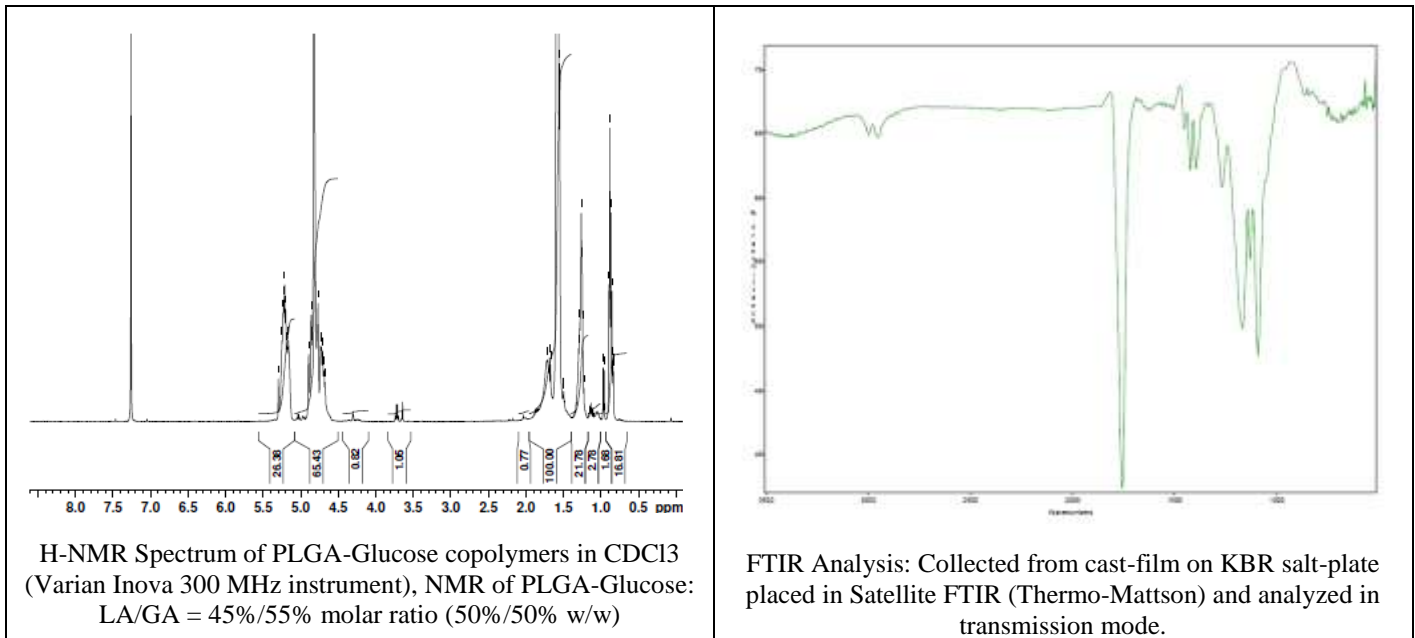
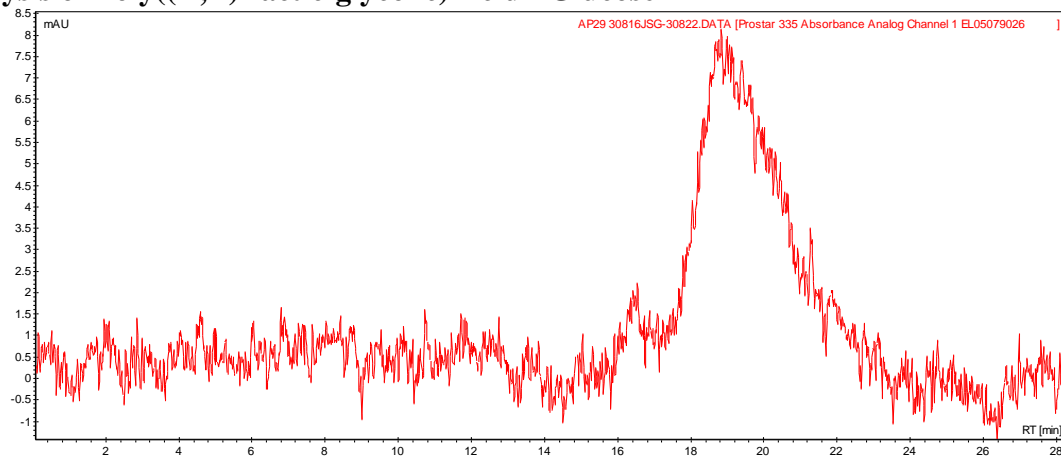


# No. AP29 Certificate of Analysis

Product Name: Poly((D,L)Lactic-glycolic) Acid - Glucose MW ~40-60kDa (30816JSG) REV:B



- GPC analysis of Poly((D,L)Lactic-glycolic) Acid - Glucose**



Analysis Method: Varian Prostar system with 1 ml/min DCM flow across two Phenogel 5 $\mu$  columns and one Resipore column (Agilent). Detection via UV/Vis, calibrated against polystyrene standards.

Polymer	Mn (from GPC)	Mw (from GPC)	PDI
PLGA-Glucose	32941	55320	1.68

- Structure of Poly((D,L)Lactic-glycolic) Acid – Glucose**

