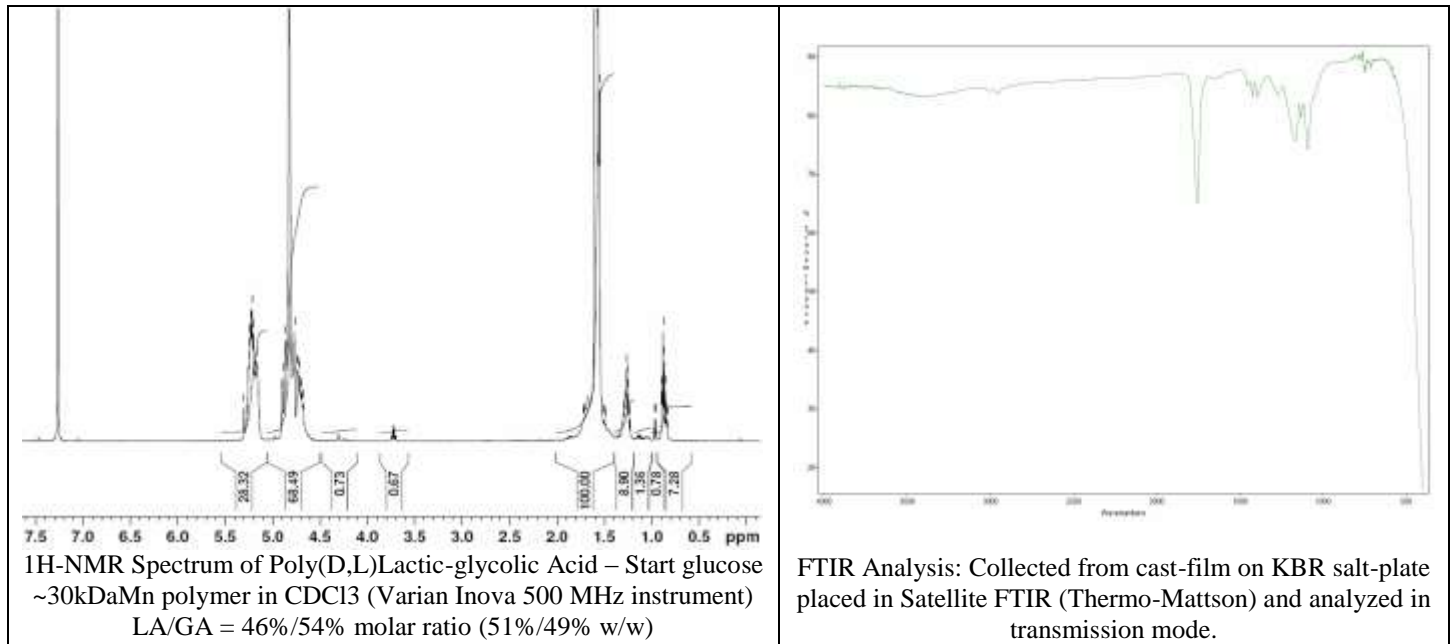
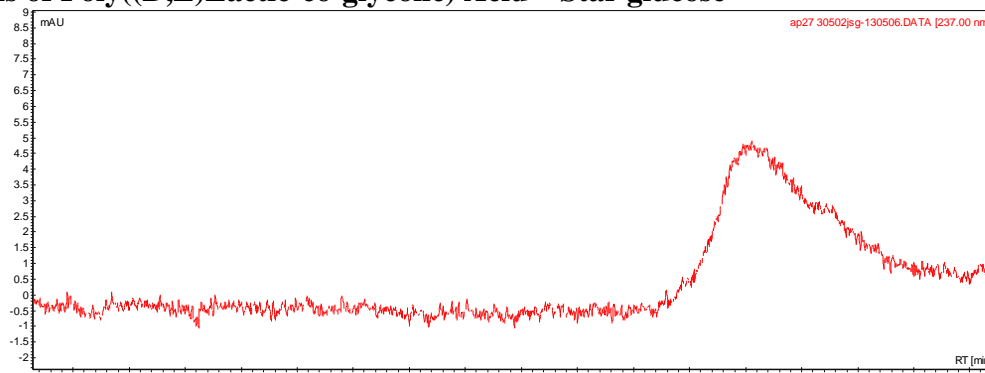


# No. AP29 Certificate of Analysis

Product Name: Poly((D,L)Lactic-co-glycolic) Acid – Star glucose (Lot#: 30502JSG) REV:B



- GPC analysis of Poly((D,L)Lactic-co-glycolic) Acid – Star glucose**



Analysis Method: Varian Prostar system with 1 ml/min DCM flow across two Phenogel 5u columns and one PLgel Resipore column (Agilent). Detection via UV/Vis, calibrated against polystyrene standards

Polymer	Mn (from GPC)	Mw (from GPC)	PDI
PLGA-Glucose	45393	76807	1.69

- Structure of Poly((D,L)Lactic-co-glycolic) Acid – Star glucose**

