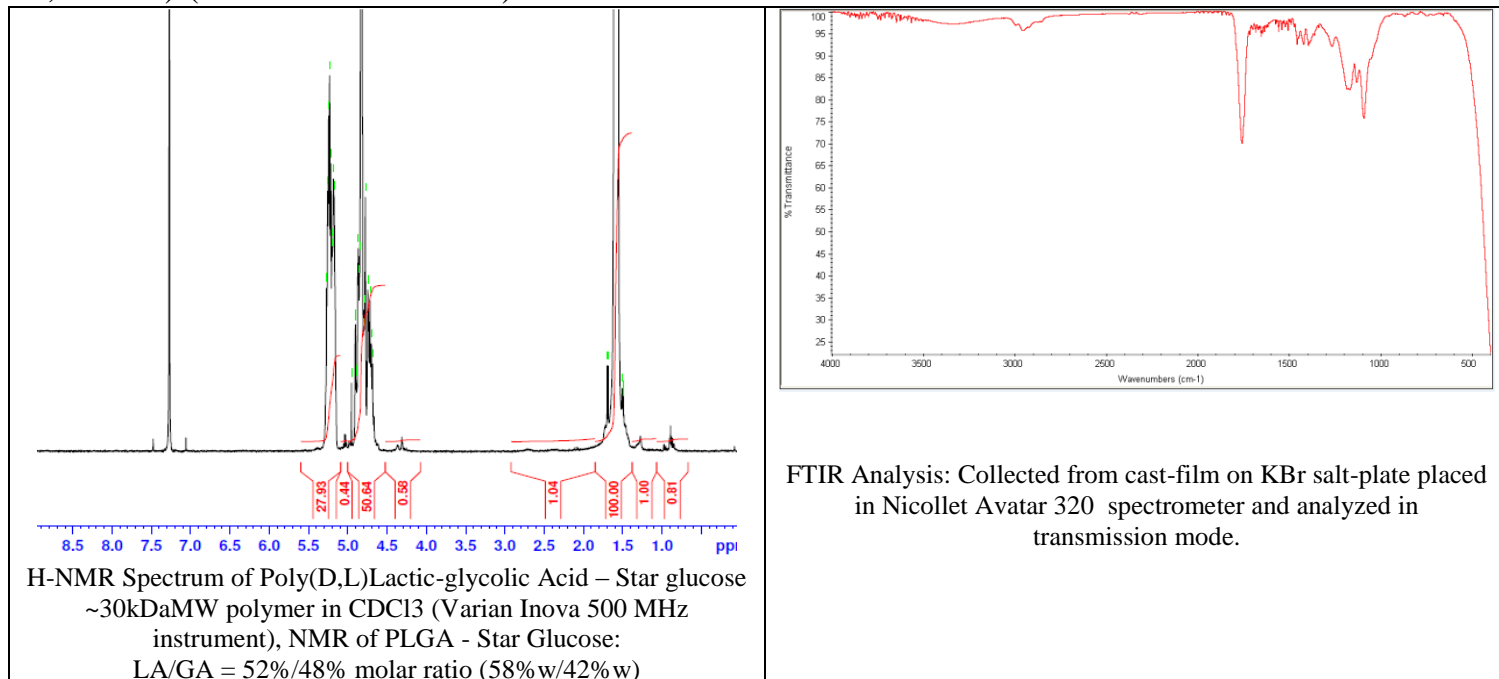
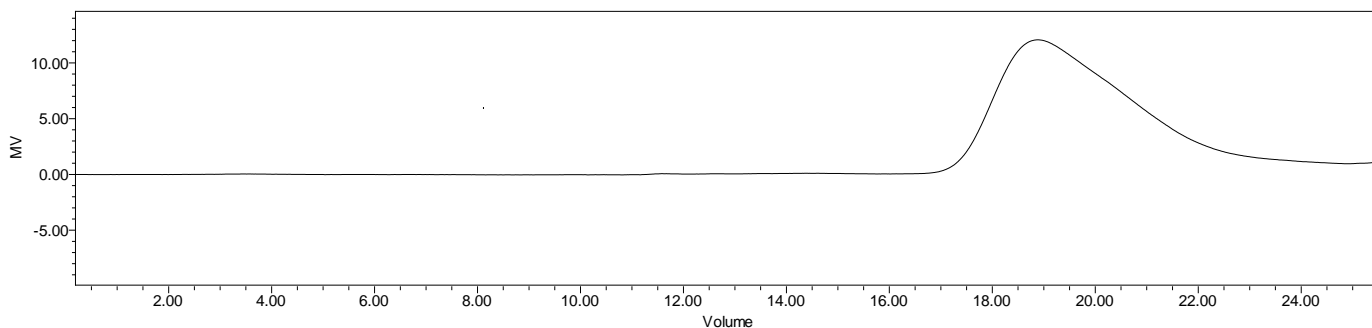


No. AP029 Certificate of Analysis

Product Name: Poly((D,L)Lactide-co-glycolide) – star glucose (50:50 LA:GA, MW~ 40,000-60,000 Da) (Lot# 181017RAI-B)



- **GPC analysis of Poly(D,L)Lactic-Glycolic Acid – Star glucose**

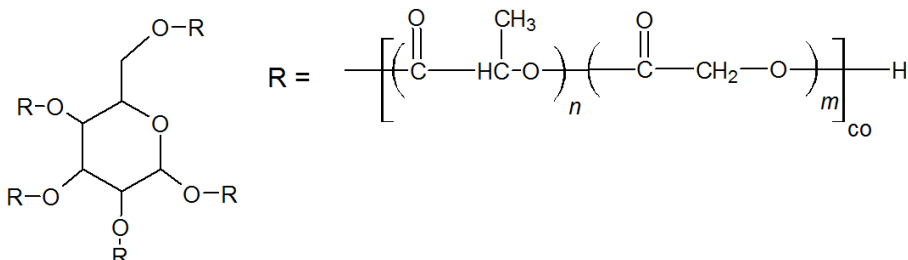


Analysis Method: Waters Breeze 2 system with 1 ml/min THF flow across three GPC columns. Detection via refractive index, calibrated against polystyrene standards.

| Polymer | Mn (from GPC) | Mw (from GPC) | PDI |
|---------------|---------------|---------------|------|
| PLGA-Glucose* | 36,363 | 49,623 | 1.36 |

*- compared against linear standards

- **Structure of Poly(D,L)Lactic-Glycolic Acid – Star glucose**



Material provided for research use only. Not for human use.