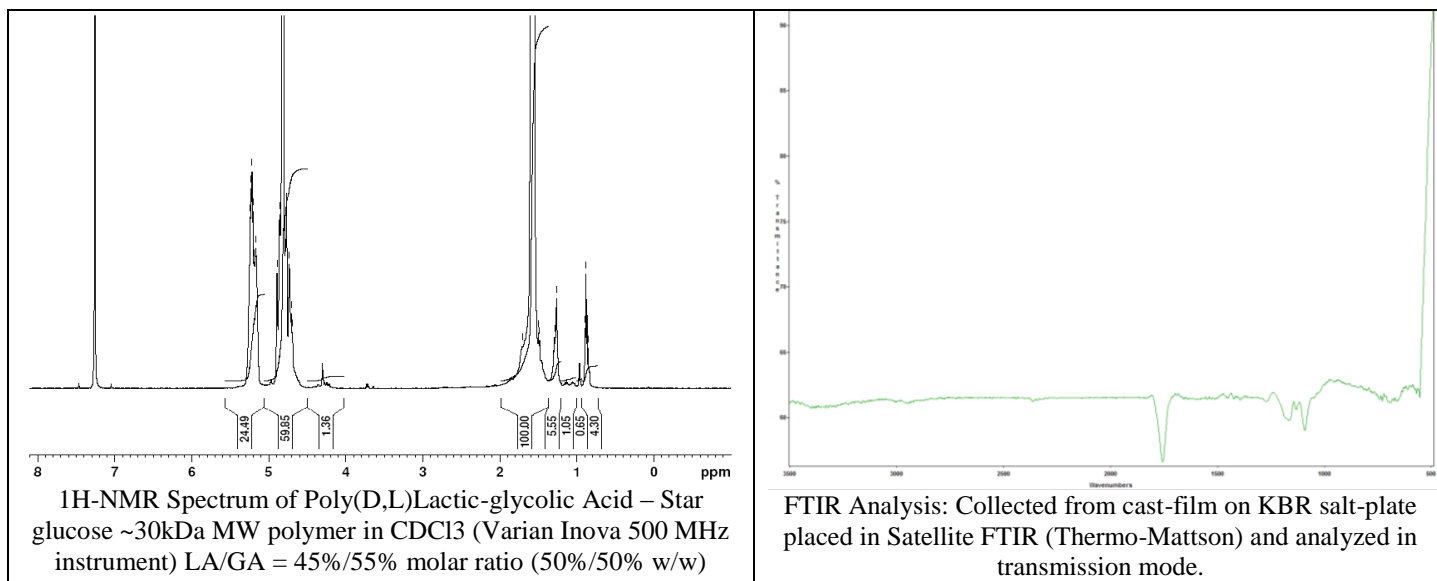
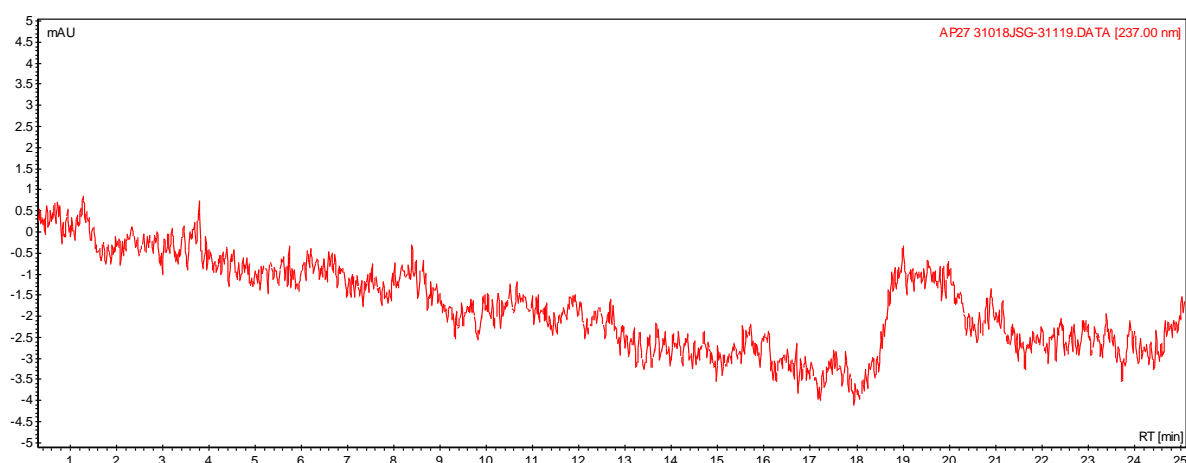


# No. AP27 Certificate of Analysis

Product Name: Poly((D,L)Lactic-glycolic) Acid – Star glucose (Lot#: 31018JSG-D) REV:A



- GPC analysis of Poly(D,L)Lactic-Glycolic Acid – Star glucose**

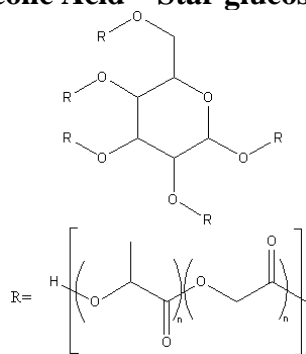


Analysis Method: Varian Prostar system with 1 ml/min DCM flow across three Pheogel 5u columns and one Resipore column (Agilent). Detection via UV/Vis, calibrated against polystyrene standards

| Polymer       | M <sub>n</sub> (from GPC) | M <sub>w</sub> (from GPC) | PDI  |
|---------------|---------------------------|---------------------------|------|
| PLGA-Glucose* | 21,188                    | 35,527                    | 1.68 |

\* - against linear standards

- Structure of Poly(D,L)Lactic-Glycolic Acid – Star glucose**



Material provided for research use only. Not for human use.