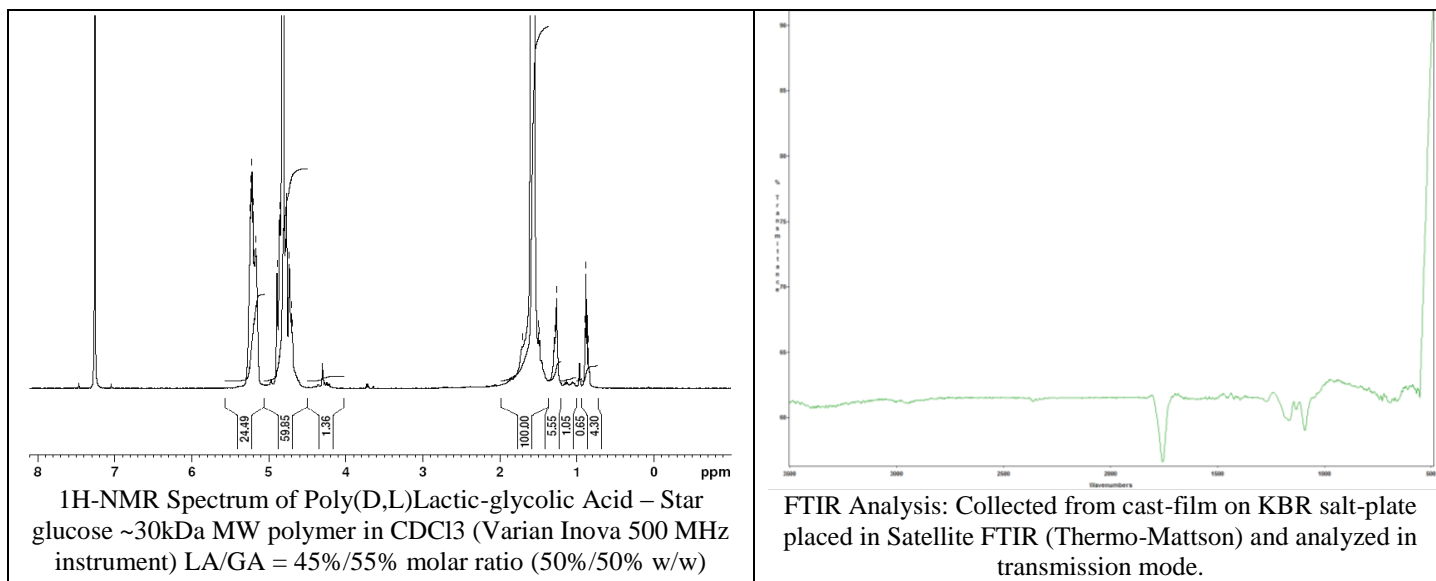
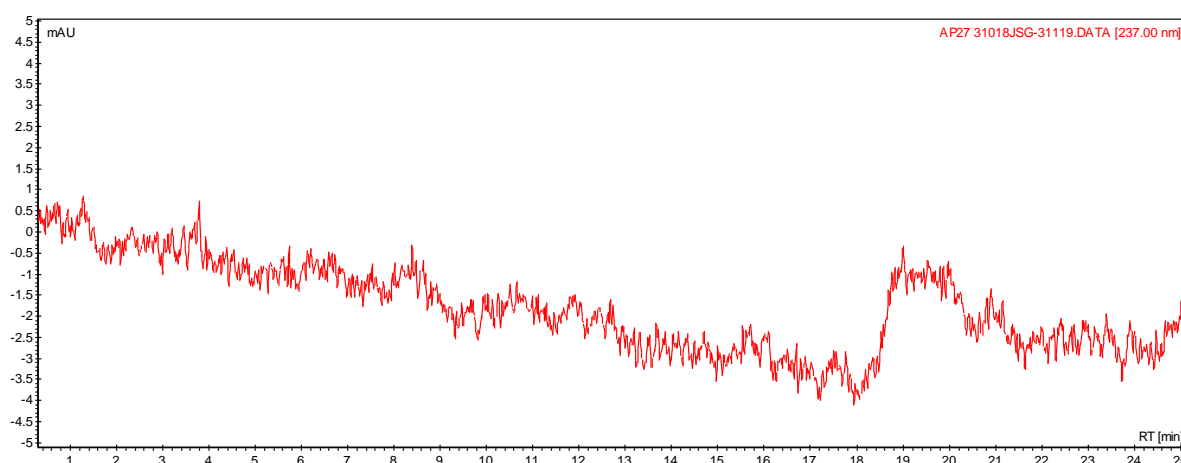


# No. AP27 Certificate of Analysis

Product Name: Poly((D,L)Lactic-glycolic) Acid – Star glucose (Lot#: 31018JSG-D) REV:A



## • GPC analysis of Poly((D,L)Lactic-Glycolic) Acid – Star glucose



Polymer	M <sub>n</sub> (from GPC)	M <sub>w</sub> (from GPC)	PDI
PLGA-Glucose*	21,188	35,527	1.68

\* - against linear standards

## • Structure of Poly((D,L)Lactic-Glycolic) Acid – Star glucose

