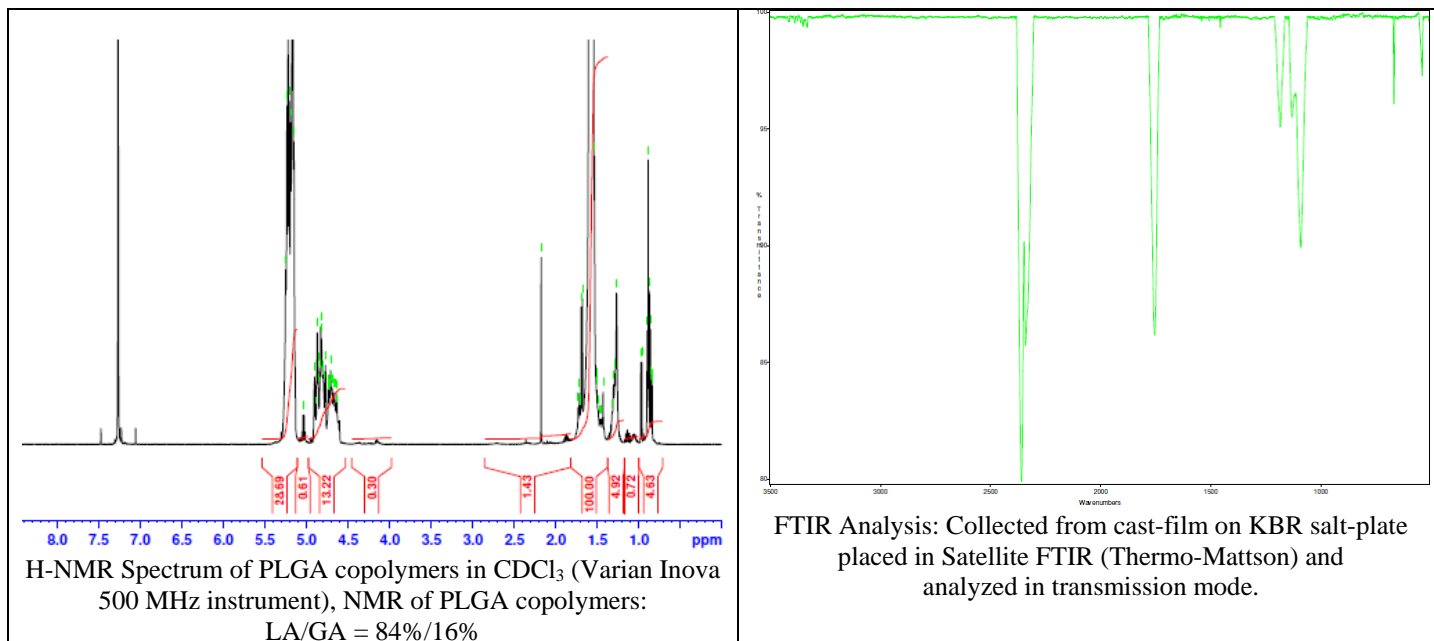


# No. AP024

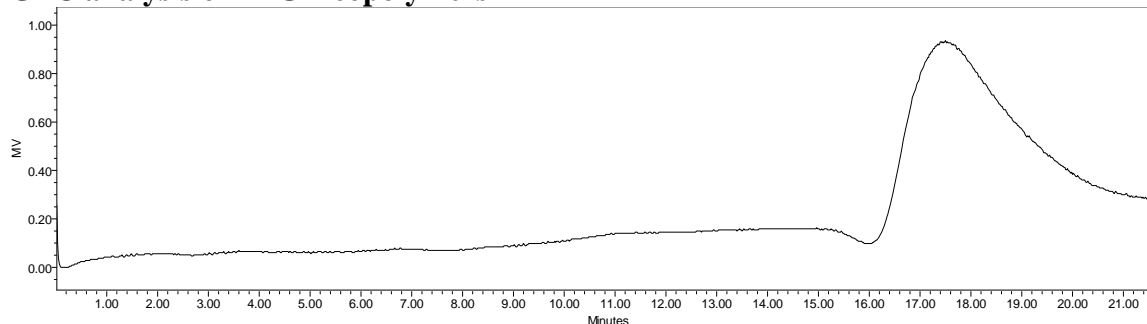
# Certificate of Analysis



Product Name: Poly(lactide-co-glycolide) copolymers, ester endcap (85:15 LA:GA),  
M<sub>n</sub>: 35,000-45,000 Da) (Lot#: 60415JSG)



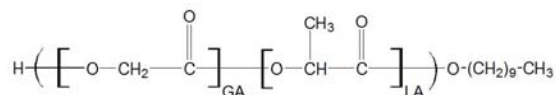
## • GPC analysis of PLGA copolymers



Analysis Method: Varian Prostar system with 1 ml/min DCM flow across two Phenogel 5µm columns and one Resipore column (Agilent). Detection via UV/Vis, calibrated against polystyrene standards.

Polymer	M <sub>n</sub> (from GPC)	M <sub>w</sub> (from GPC)	PDI
PLGA	35,194	45,942	1.30

## • Structure of PLGA copolymers



Material provided for research use only. Not for human use.

PolySciTech Division of Akina, Inc. | 3495 Kent Avenue, West Lafayette, IN 47906  
765-464-0390 | www.polysciotech.com

For research use only.