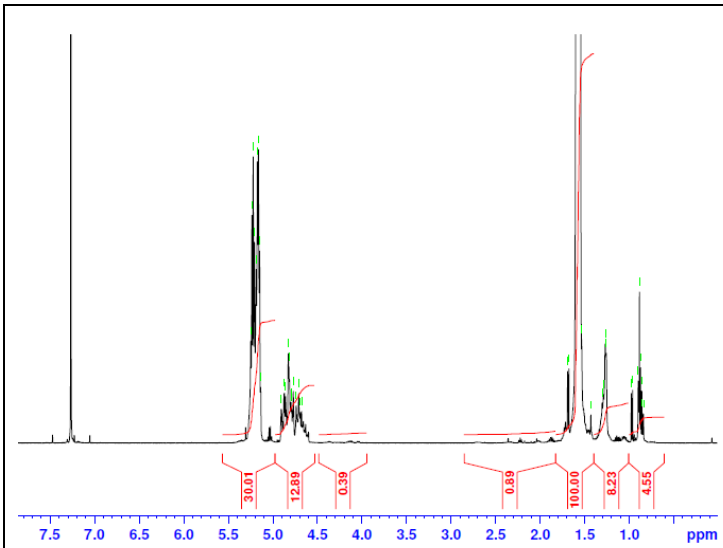


No. AP024

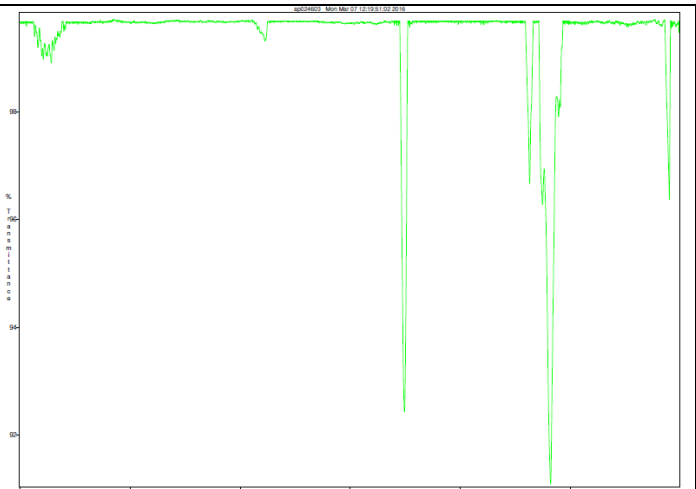
Certificate of Analysis



Product Name: Poly(lactide-co-glycolide) copolymers, ester endcap (85:15 LA:GA,
M_n: 35,000 - 45,000 Da) (Lot#: 60302BPR)

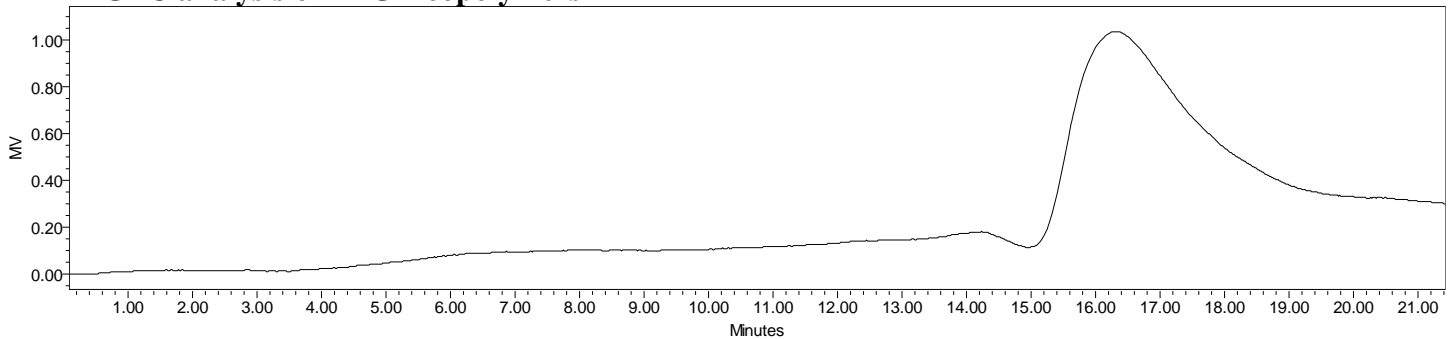


H-NMR Spectrum of PLGA copolymers in CDCl₃ (Varian Inova 500 MHz instrument), NMR of PLGA copolymers:
LA/GA = 82%/18% molar ratio (85%/15% w/w)



FTIR Analysis: Collected from cast-film on KBR salt-plate placed in Satellite FTIR (Thermo-Mattson) and analyzed in transmission mode.

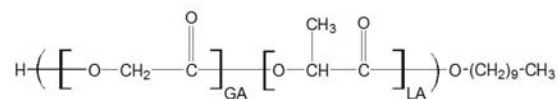
• GPC analysis of PLGA copolymers



Analysis Method: Waters Breeze 2 with 1 ml/min DCM flow across two Phenogel 5 μm columns and one PLgel Resipore column (Agilent). Detection via refractive index, calibrated against polystyrene standards.

Polymer	M _n (from GPC)	M _w (from GPC)	PDI
PLGA	39,208	64,922	1.66

• Structure of PLGA copolymers



Material provided for research use only. Not for human use.

PolySciTech Division of Akina, Inc. | 3495 Kent Avenue, West Lafayette, IN 47906

765-464-0390 | www.polysciotech.com

For research use only.