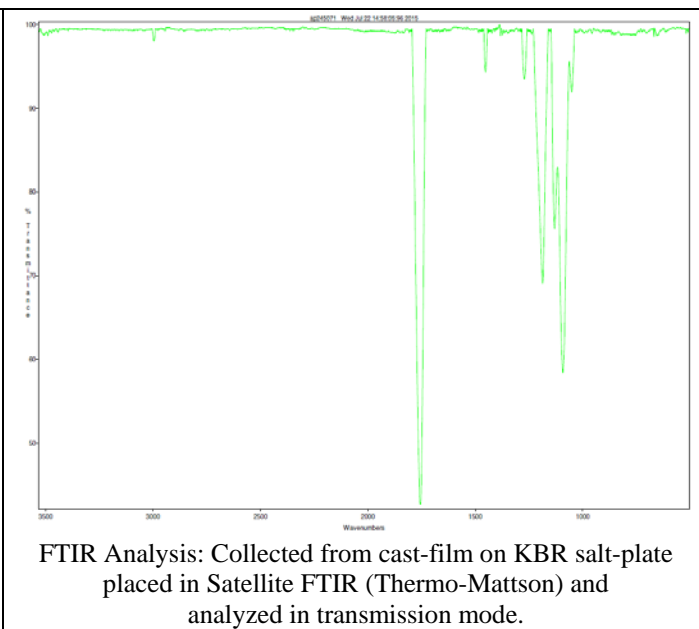
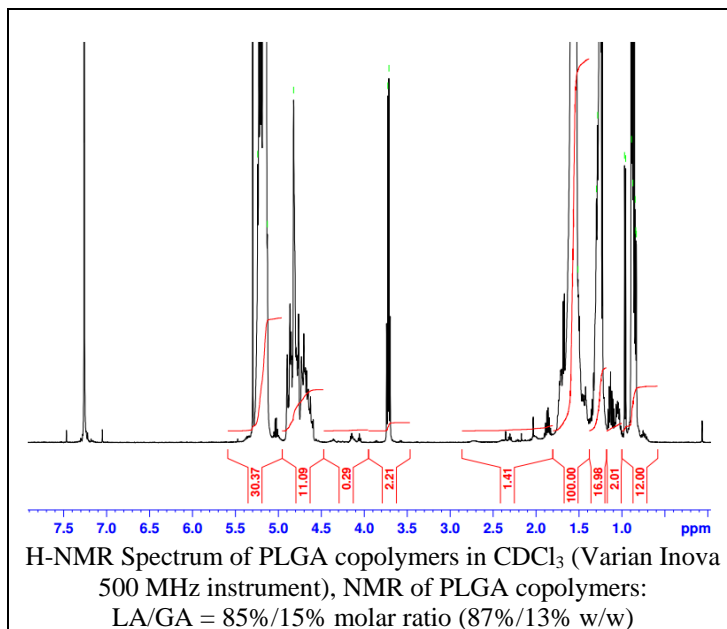


No. AP024

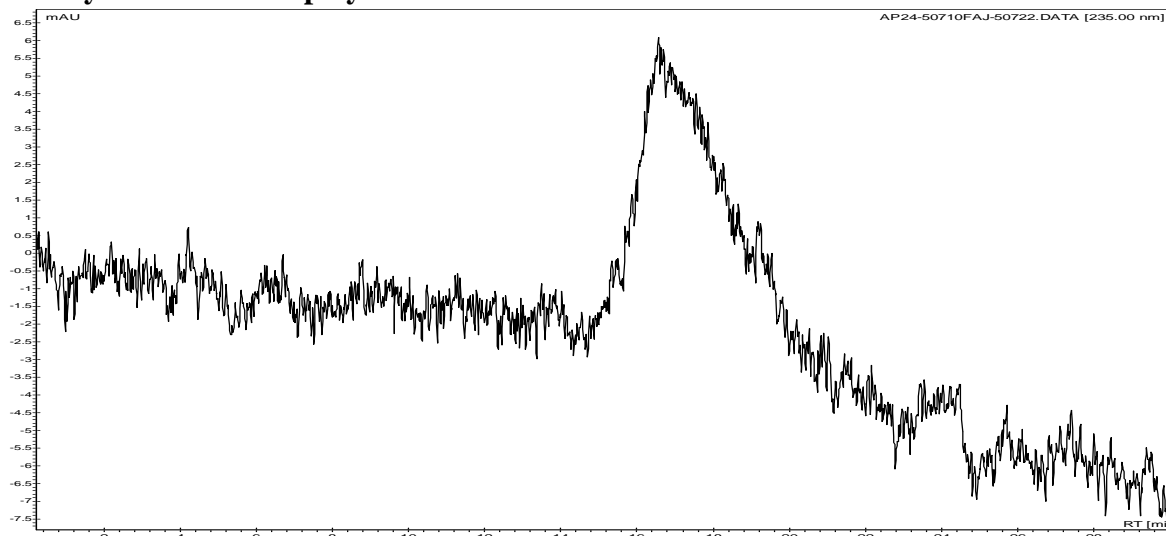
Certificate of Analysis



Product Name: Poly(lactide-co-glycolide) copolymers, ester endcap (85:15 LA:GA),
M_n: 35,000 - 45,000 Da (Lot#: 50710FAJ)



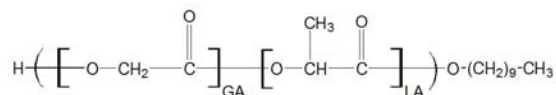
• GPC analysis of PLGA copolymers



Analysis Method: Varian Prostar system with 1 ml/min DCM flow across two Phenogel 5µm columns and one Resipore column (Agilent). Detection via UV/Vis, calibrated against polystyrene standards.

Polymer	M _n (from GPC)	M _w (from GPC)	PDI
PLGA	43,577	93,115	2.14

• Structure of PLGA copolymers



Material provided for research use only. Not for human use.