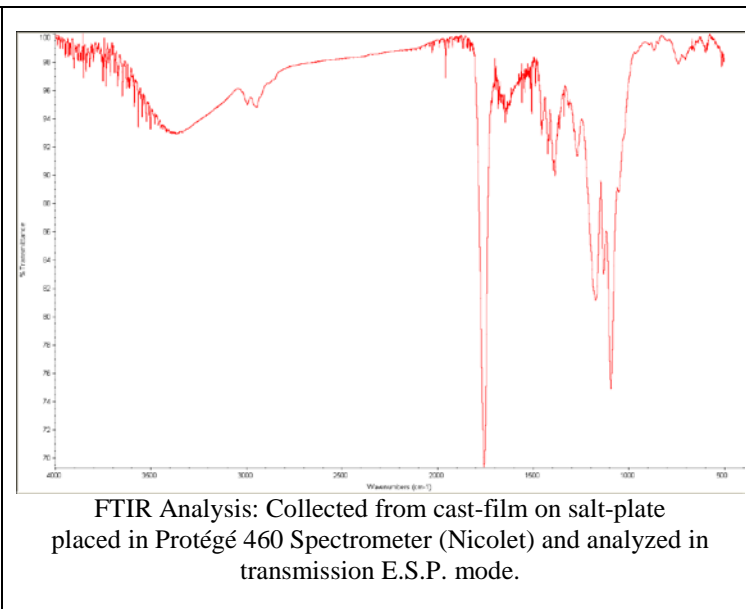
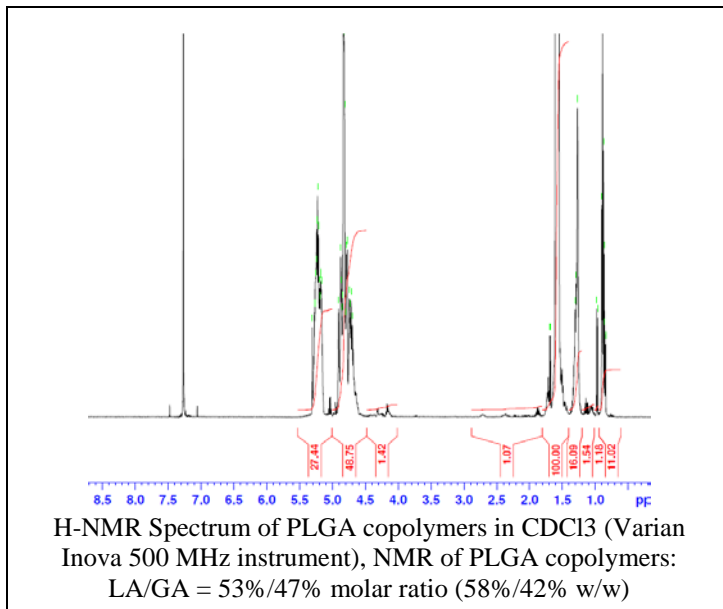


No. AP022

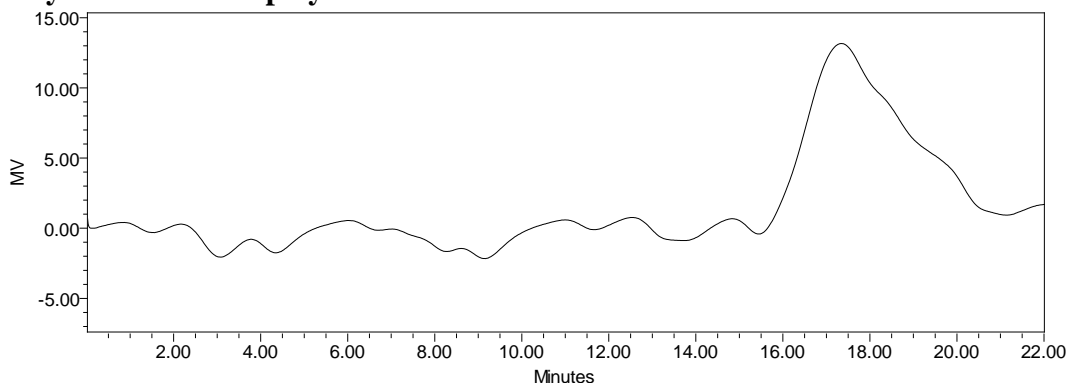
Certificate of Analysis



Product Name: Poly(lactic-co-glycolic acid) ester endcapped (50:50 LA:GA, M_n : 25,000-35,000 Da) (Lot #: 70208SJH-B)



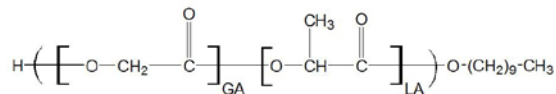
- GPC analysis of PLGA copolymers



Analysis Method: Waters Breeze 2 system with 1 ml/min THF flow across three GPC columns. Detection via refractive index, calibrated against polystyrene standards.

Polymer	M_n (from GPC)	M_w (from GPC)	PDI
PLGA	25,388	39,517	1.56

- Structure of PLGA copolymers



Material provided for research use only. Not for human use.