

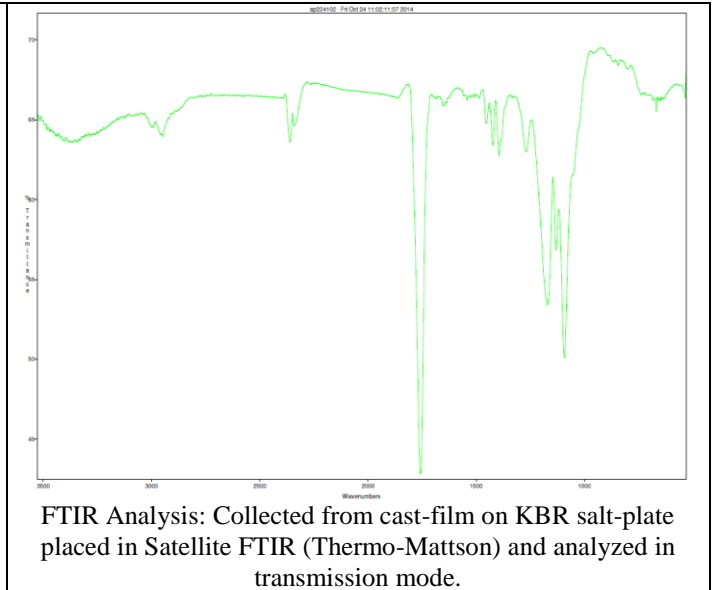
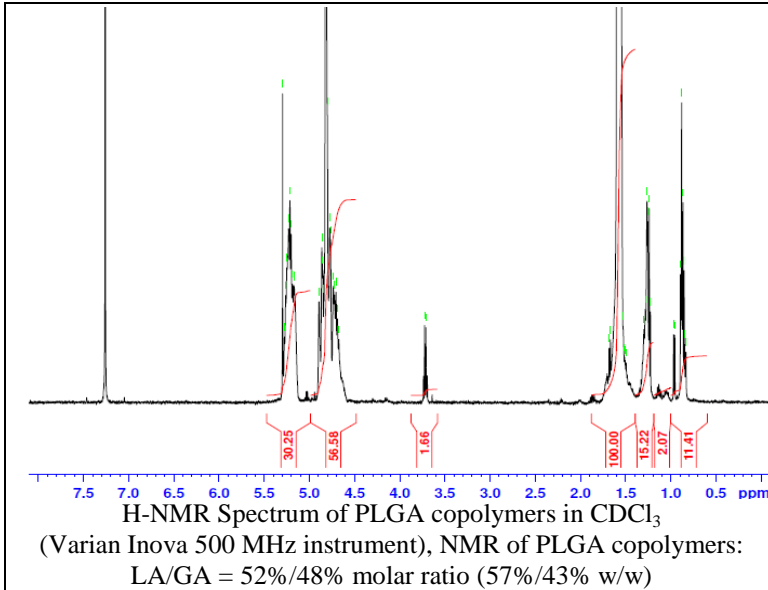
No. AP022

# Certificate of Analysis

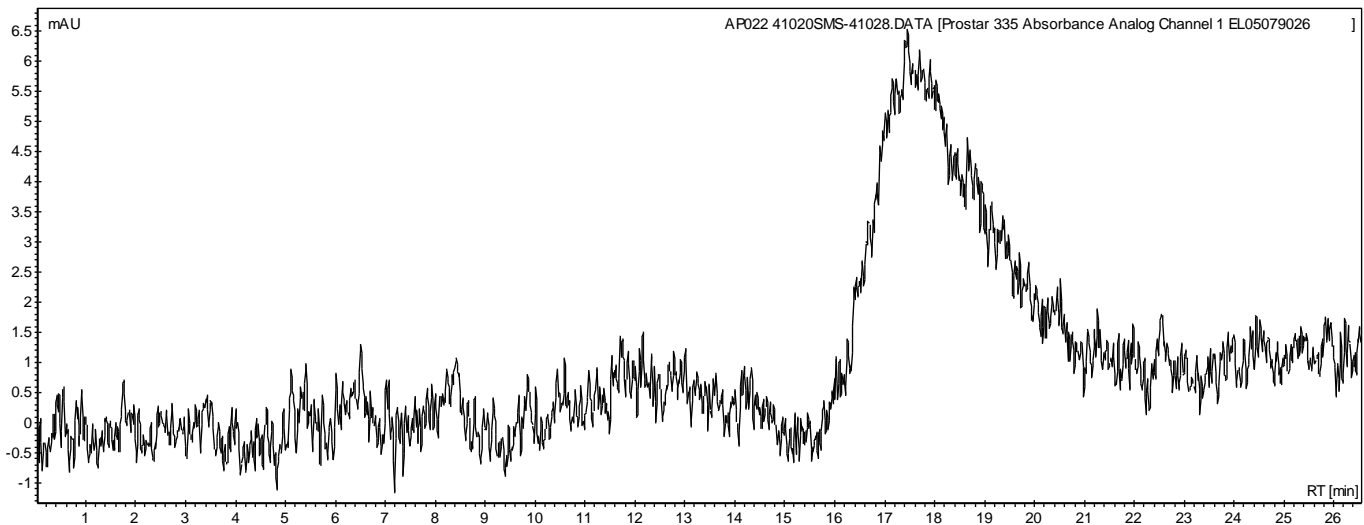


Product Name: Poly(lactic-co-glycolic acid) ester endcapped (1:1 LA:GA)

( $M_n$ : 25,000-35,000 Da) (Lot#: 41020SMS) REV:A



- GPC analysis of PLGA copolymers



Analysis Method: Varian Prostar system with 1 ml/min DCM flow across two Phenogel 5 $\mu$ m columns and one PLgel Resipore column (Agilent). Detection via UV/Vis, calibrated against polystyrene standards.

Polymer	$M_n$ (from GPC)	$M_w$ (from GPC)	PDI
PLGA	25,543	63,023	2.47

- Structure of PLGA copolymers

