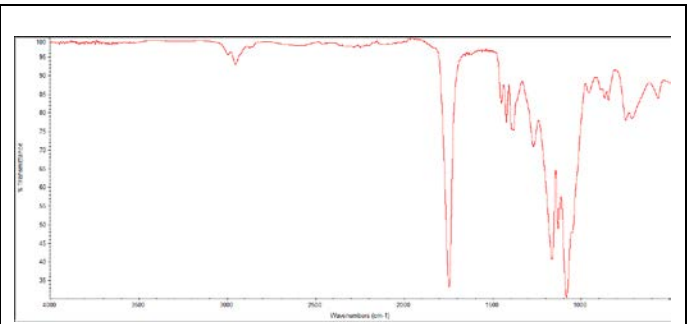
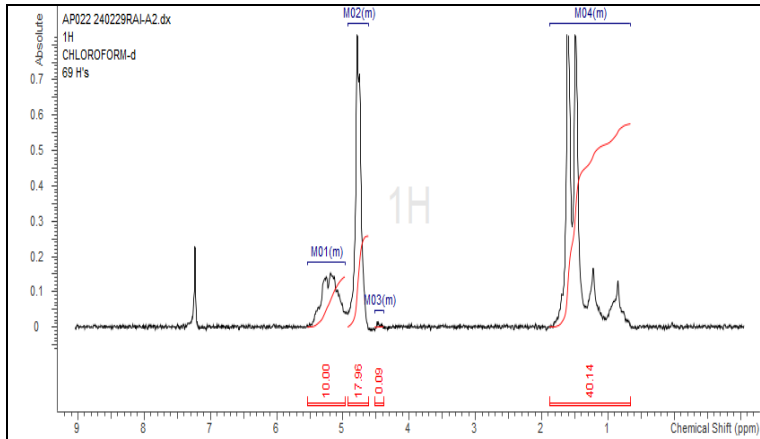


No. AP022

Certificate of Analysis

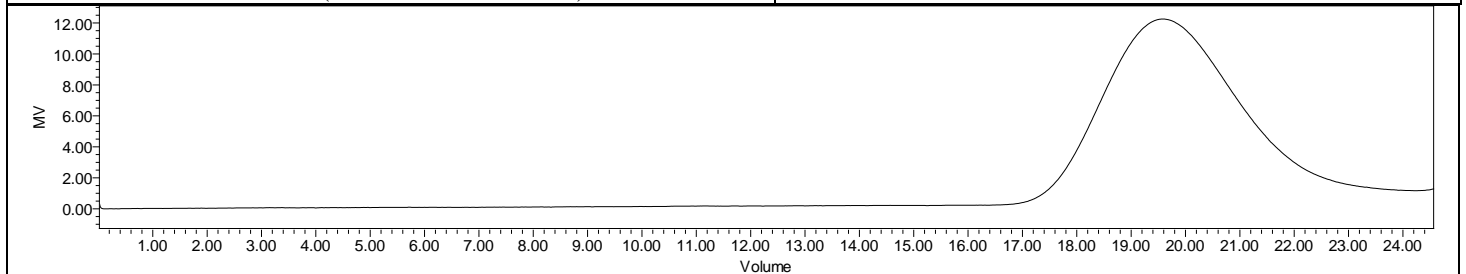


Product Name: Poly(Lactide-co-glycolide) ester endcap (LA:GA 50:50,
Mn 25,000-35,000) (Lot # 240229RAI-A)



FTIR Analysis: Collected from IS5 ID7-ATR spectrometer (Thermo Scientific) and analyzed in transmission mode.

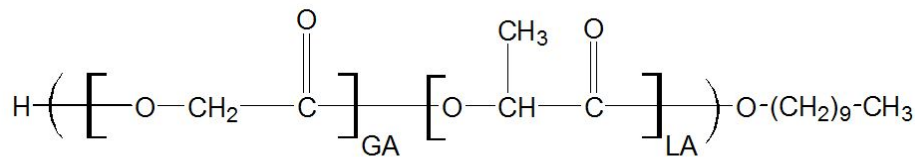
H-NMR Spectrum of copolymers in CDCl₃ (NMReady-60e, Nanalysis 60 MHz) NMR of PLGA Copolymer: LA:GA 53%:47% molar ratio (LA:GA 58%:42% w-w)



GPC-ES Analysis Method: Waters Breeze 2 system with 1 ml/min THF flow across three GPC columns. Detection via refractive index, calibrated against polystyrene standards.

Polymer	M _n (from GPC)	M _w (from GPC)	PDI
PLGA	25,358	38,429	1.52

- Structure of PLGA copolymers



Approved By:
Amie Tyler
Quality Manager