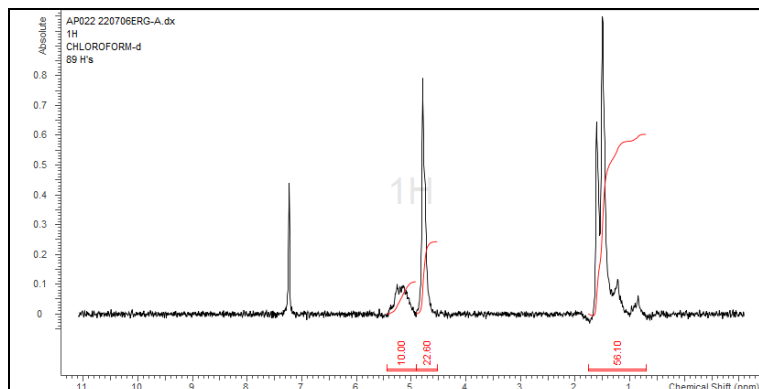


No. AP022

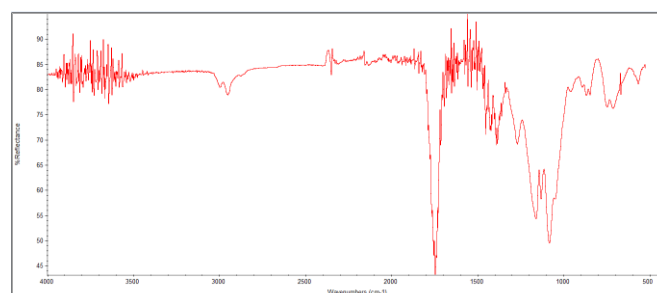
Certificate of Analysis



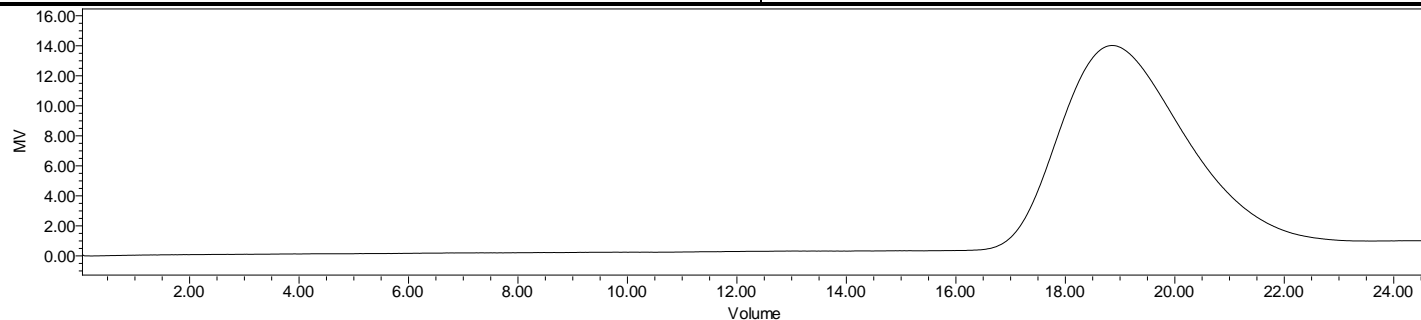
Product Name: Poly(Lactide-co-glycolide) ester endcap (LA:GA 50:50,
Mn 25,000-35,000) (Lot # 220706ERG-A)



H-NMR Spectrum of copolymers in CDCl₃ (NMReady-60e, Nanalysis 60 MHz) NMR of PLGA Copolymer: LA:GA 47%:53% molar ratio (LA:GA 52%:48% w-w)



FTIR Analysis: Collected from Nicolet Avatar 380 spectrometer with ATR Smart Orbit and analyzed in transmission mode.



GPC-ES Analysis Method: Waters Breeze 2 system with 1 ml/min THF flow across three GPC columns. Detection via refractive index, calibrated against polystyrene standards.

Polymer	M _n (from GPC)	M _w (from GPC)	PDI
PLGA	31,512	54,428	1.72

- **Structure of PLGA copolymers**

