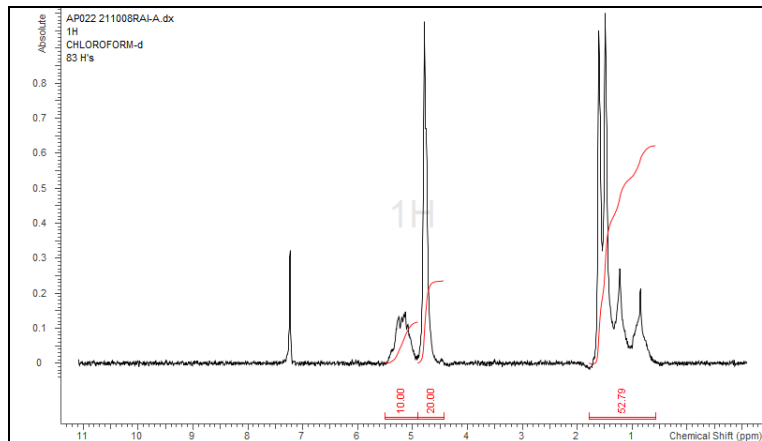


# No. AP022

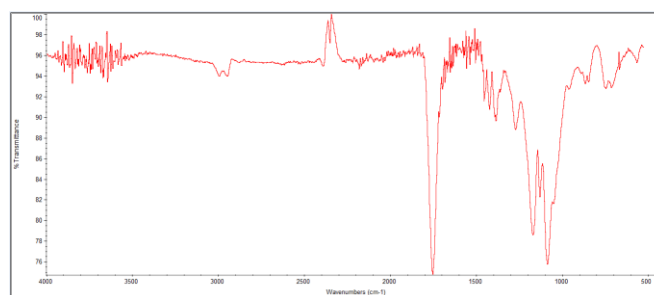
# Certificate of Analysis



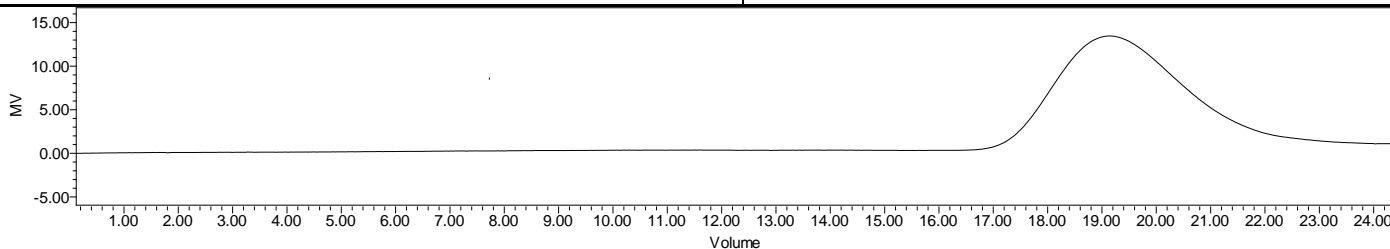
Product Name: Poly(Lactide-co-glycolide) ester endcap (LA:GA 50:50,  
Mn 25,000-35,000) (Lot # 211008RAI-A)



H-NMR Spectrum of copolymers in CDCl<sub>3</sub> (NMReady-60e, NAnalysis 60 MHz) NMR of PLGA Copolymer: 50%-50% molar ratio (55%-45% w-w)



FTIR Analysis: Collected from Nicolet Avatar 380 spectrometer with ATR Smart Orbit and analyzed in transmission mode.



GPC-ES Analysis Method: Waters Breeze 2 system with 1 ml/min THF flow across three GPC columns. Detection via refractive index, calibrated against polystyrene standards.

Polymer	M <sub>n</sub> (from GPC)	M <sub>w</sub> (from GPC)	PDI
PLGA	33,837	49,284	1.46

## • Structure of PLGA copolymers

