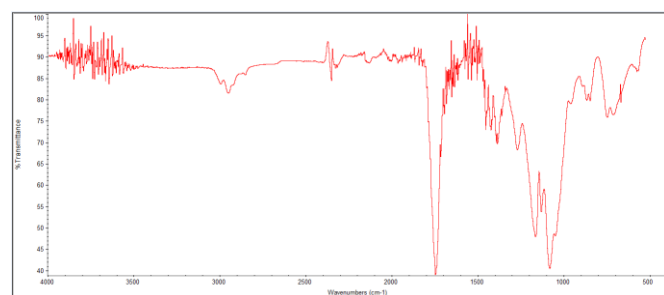
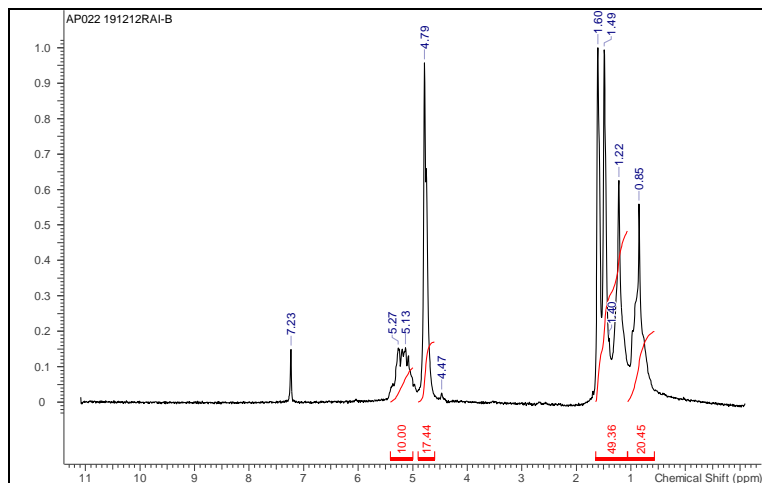


# No. AP022

# Certificate of Analysis

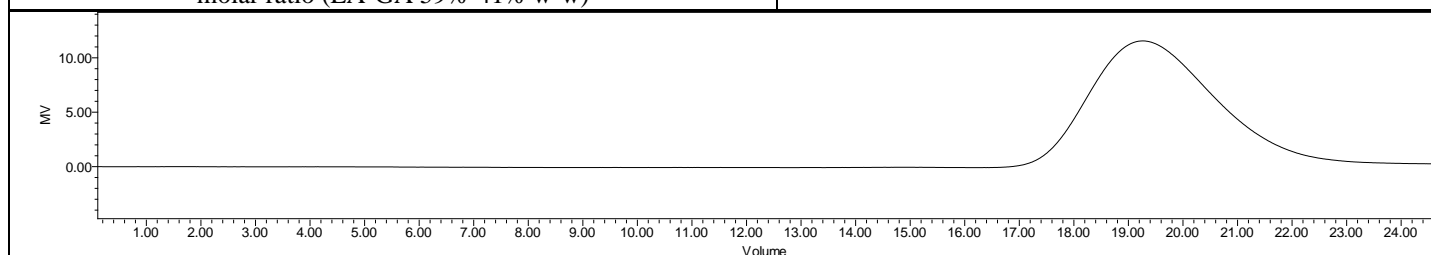


Product Name: Poly(Lactide-co-glycolide) ester endcap (LA:GA 50:50,  
Mn 25,000-35,000) (lot #191212RAI-B)



FTIR Analysis: Collected from Nicolet Avatar 380 spectrometer with ATR Smart Orbit and analyzed in transmission mode.

H-NMR Spectrum of copolymers in CDCl<sub>3</sub> (NMReady-60e, Nanalysis 60 MHz) NMR of PLGA copolymer: LA-GA = 53%-47% molar ratio (LA-GA 59%-41% w-w)



GPC Analysis Method: Waters Breeze 2 system with 1 ml/min THF flow across three GPC columns. Detection via refractive index, calibrated against polystyrene standards.

| Polymer | M <sub>n</sub> (from GPC) | M <sub>w</sub> (from GPC) | PDI  |
|---------|---------------------------|---------------------------|------|
| PLGA    | 26,087                    | 42,401                    | 1.63 |

## • Structure of PLGA

