

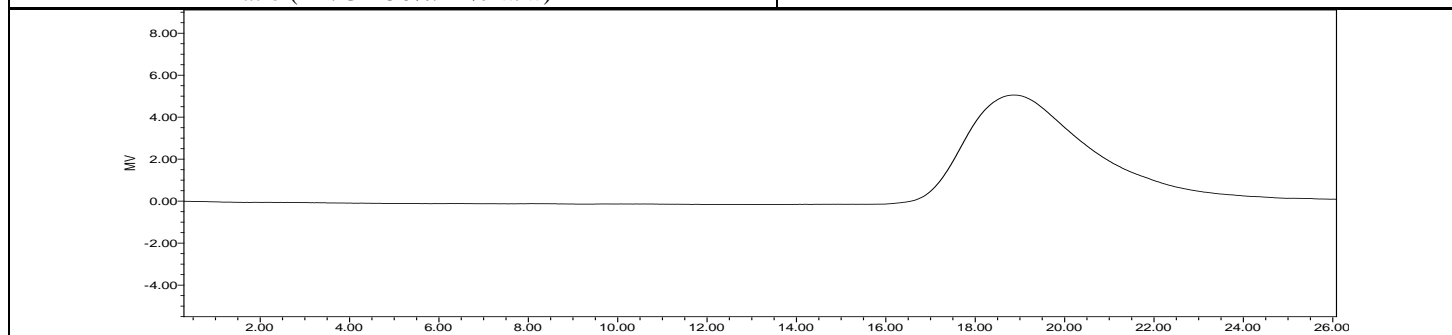
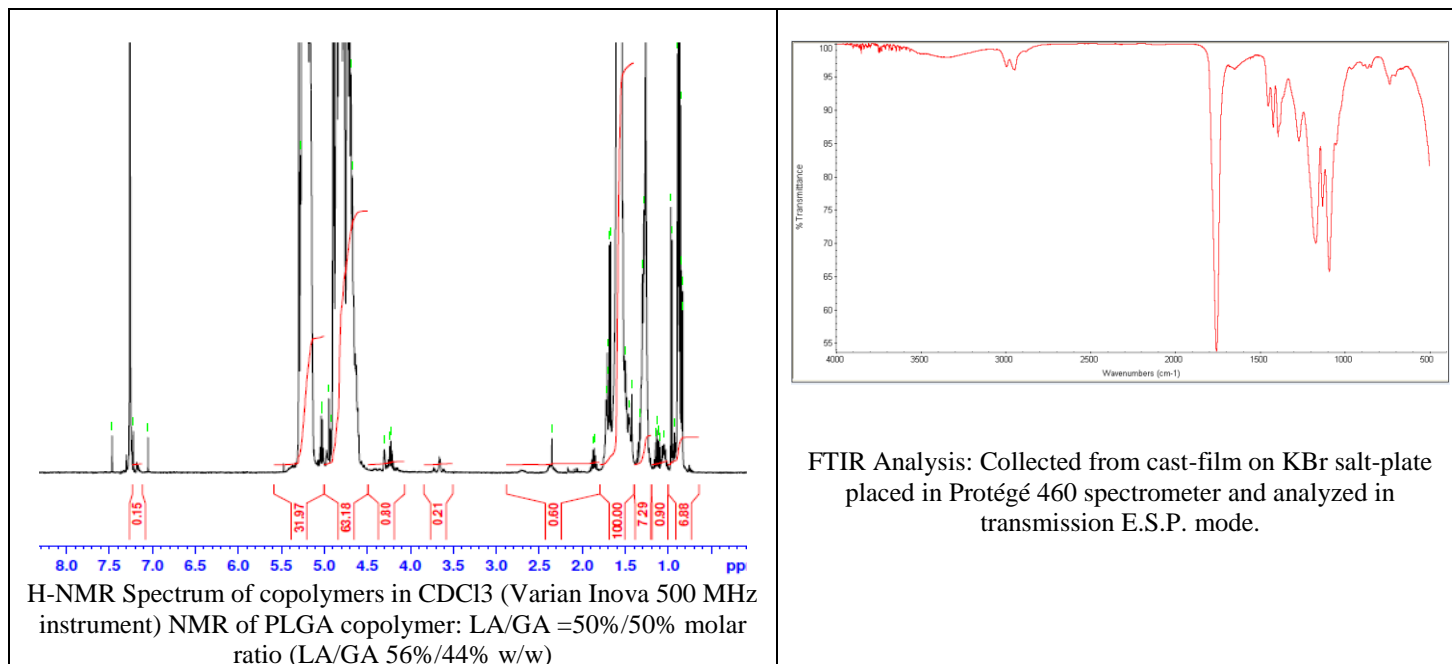
No. AP022

# Certificate of Analysis



Product Name: Poly(lactide-co-glycolide) ester endcapped (50:50 LA:GA)

(M<sub>n</sub>: 25,000-35,000Da) (Lot#: 171205SLG-A)



GPC Analysis Method: Waters Breeze 2 system with 1 ml/min THF flow across three GPC columns. Detection via refractive index, calibrated against polystyrene standards.

Polymer	M <sub>n</sub> (from GPC)	M <sub>w</sub> (from GPC)	PDI
PLGA	32,511	43,904	1.35

\*- from MFG data

- Structure of PLGA copolymer

