

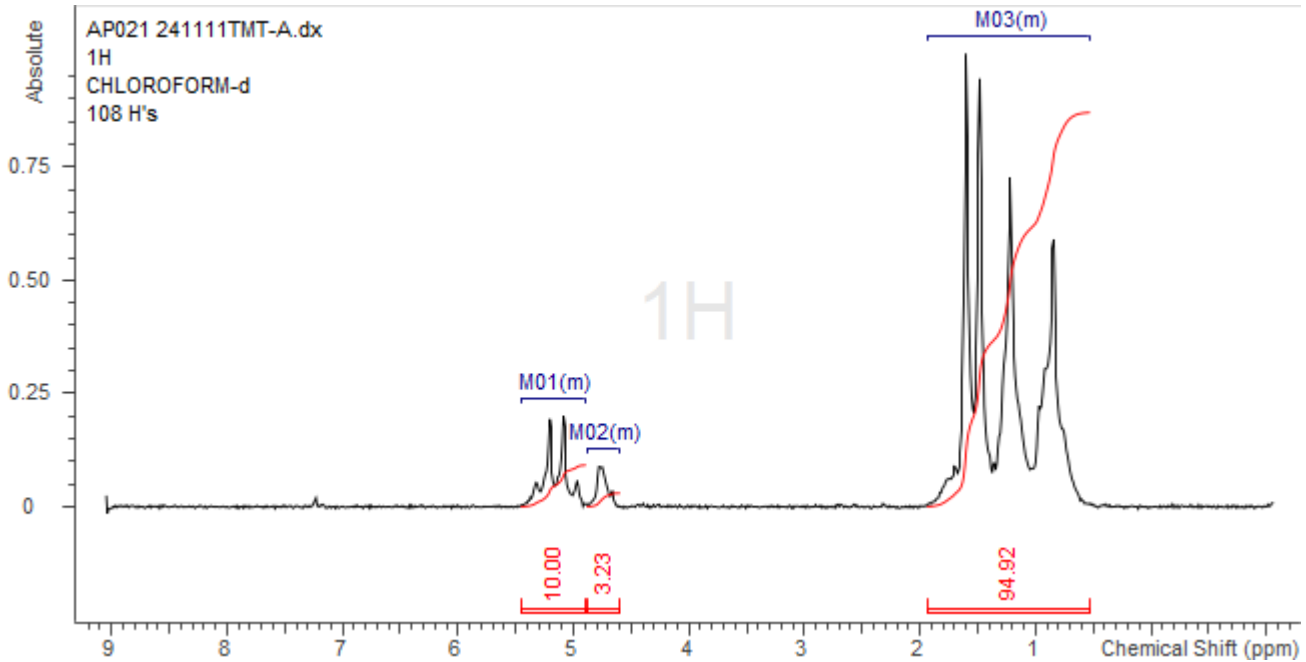
No. AP021

Certificate of Analysis



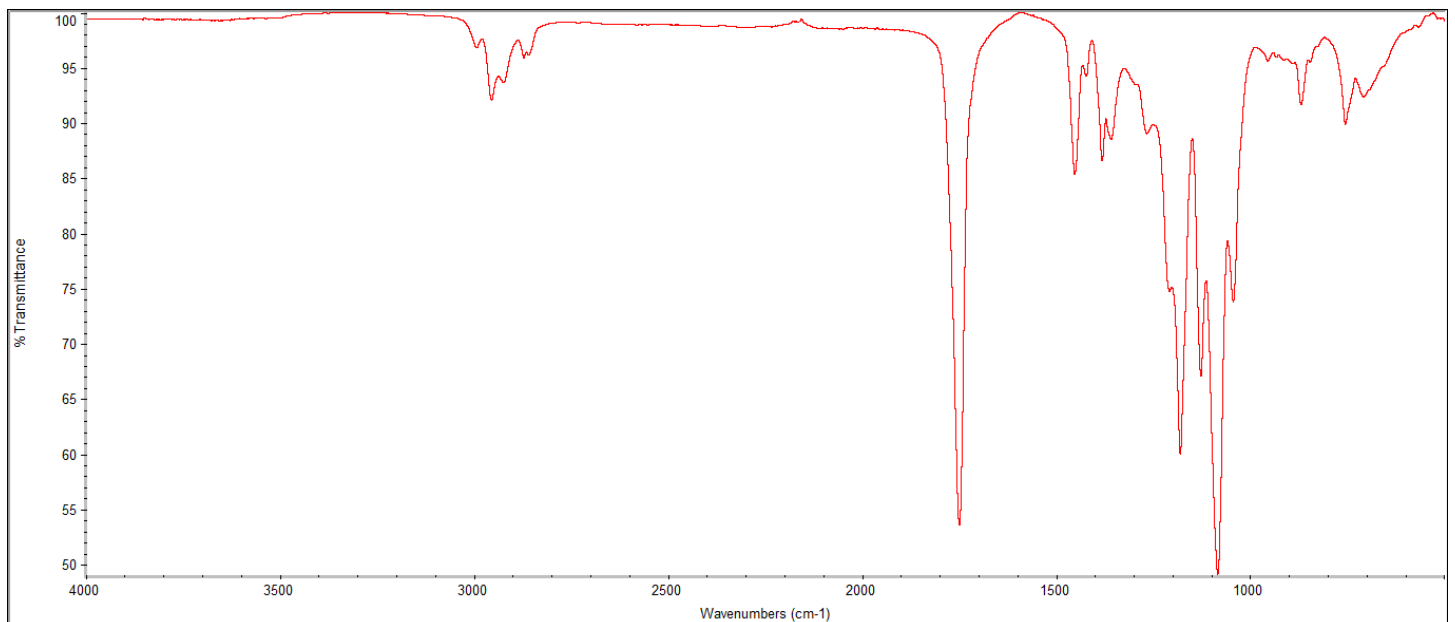
Product Name: Poly(L-lactide-co-glycolide) LG 85:15 acid endcap (M_n 35,000-45,000 Da)
(Lot#: 241111TMT-A)

H-NMR



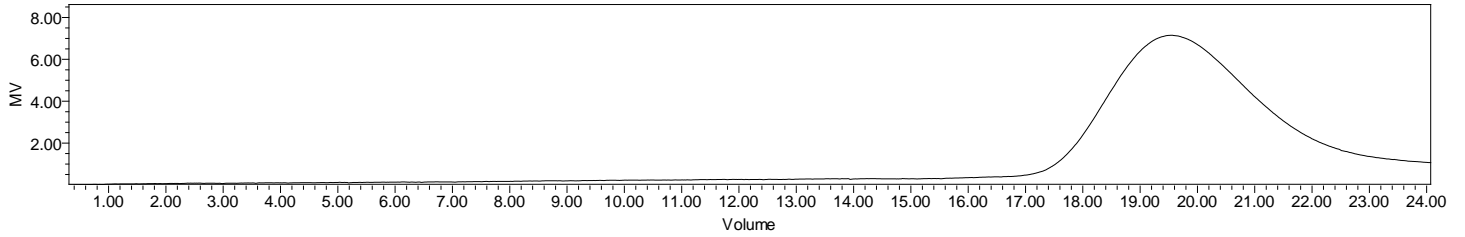
H-NMR Spectrum of copolymers in $CDCl_3$ (NMReady-60e, Nanalysis 60 MHz) NMR of PLLGA copolymer: LA-GA =86%-14% molar ratio (LA:GA 88%:12% w:w)

FTIR



FTIR Analysis: Collected from IS5 ID7-ATR spectrometer (Thermo Scientific) and analyzed in transmission mode.

GPC-ES



Polymer	M _n (from GPC)	M _w (from GPC)	PDI
PLLGA	35,043	43,565	1.24

GPC-ES Analysis Method: Waters Breeze 2 system with 1 ml/min THF flow across three GPC columns. Detection via refractive index, calibrated against polystyrene standards.

DSC

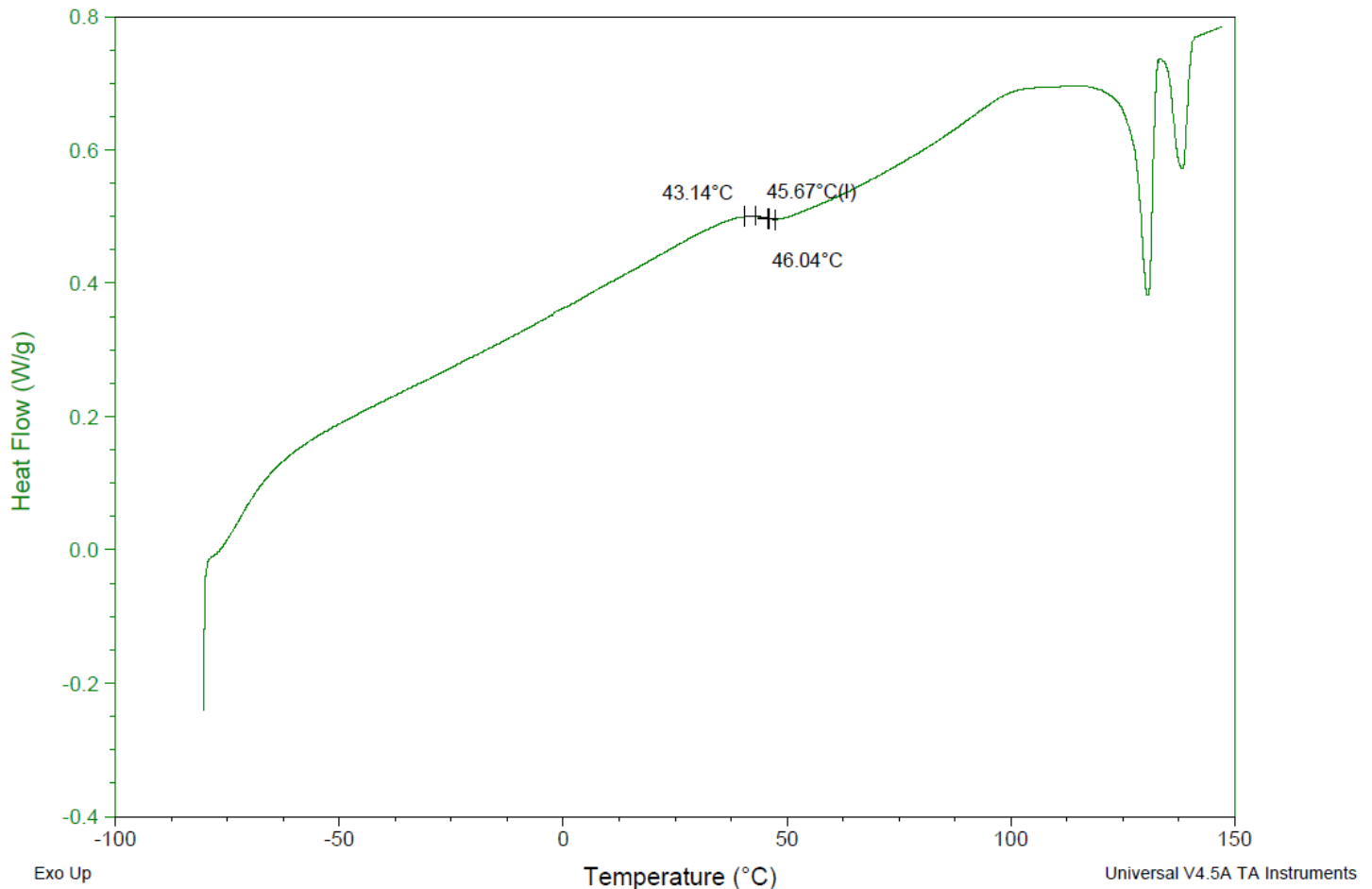
Sample: AP021 241111TMT-A
 Size: 4.4000 mg
 Method: Glass Transition-simple

DSC

File: \\...COA\AP021 241111TMT-A DSC.001

Run Date: 14-Nov-2024 09:03

Instrument: DSC Q2000 V24.11 Build 124

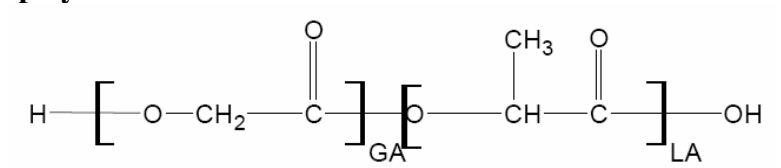


Testing: 1-5 mg sample tested in crimped aluminum pan on a TA Instruments Model Q2000 with procedure equilibraion 100 °C, isothermal 5 minutes, equilibrate -80 °C, data on, ramp 10 °C/min to 150 °C. T_g = 45.67 °C

IV

Inherent Viscosity: 0.167 dL/g (calculated from kinematic viscosity at 2% w/v Acetone on Rheosense microVISC, n=3) at 25°C.

Structure of PLLGA copolymers



Approved By:
Amie Tyler
Quality Manager