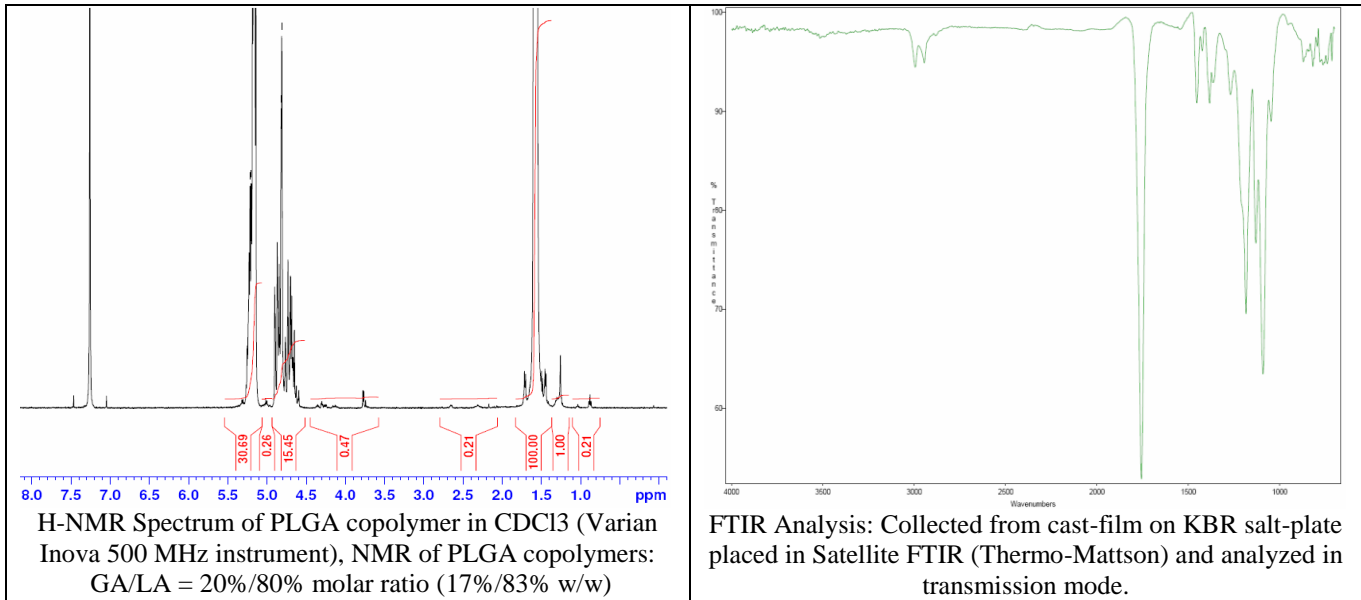
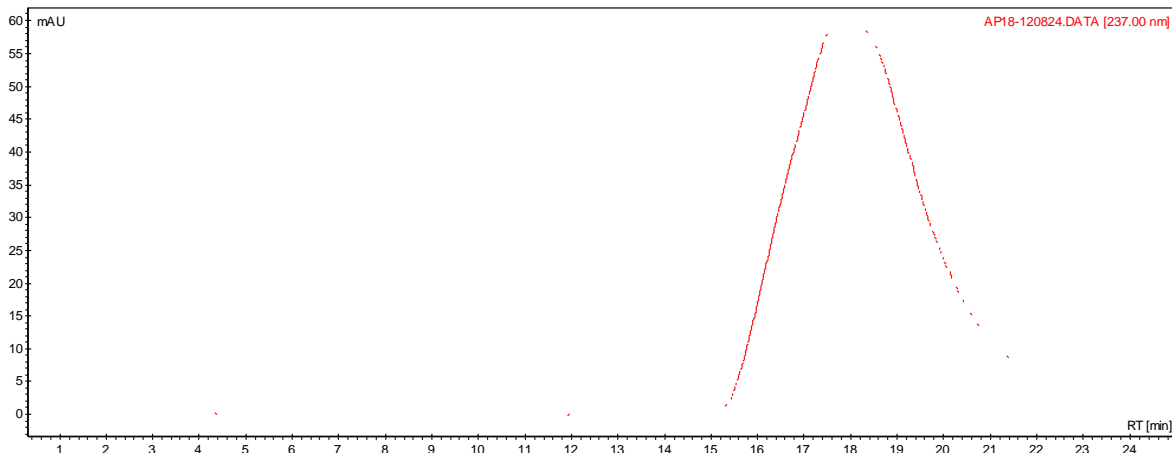


No. AP21 Certificate of Analysis

Product Name: Poly(lactic-co-glycolic) copolymers acid endcapped (85:15 LA:GA, MW ~60,000Da) (Lot#: 1201302)



- GPC analysis of PLGA copolymers**



Analysis Method: Varian Prostar system with 1 ml/min DCM flow across one PLGel Mixed-D column and one PLGel Mixed-E column and one phenogel 5u column (Agilent). Detection via UV/Vis, calibrated against polystyrene standards.

Polymer	Mn (from GPC)	Mw (from GPC)	PDI
PLGA	36,026	101,999	2.83

- Structure of PLGA copolymers**



This specific batch is distributed by Akina, Inc. on behalf of original manufacturer. Quality testing was performed in-house by Akina, Inc. prior to sale and is as shown here. This batch manufactured in China.