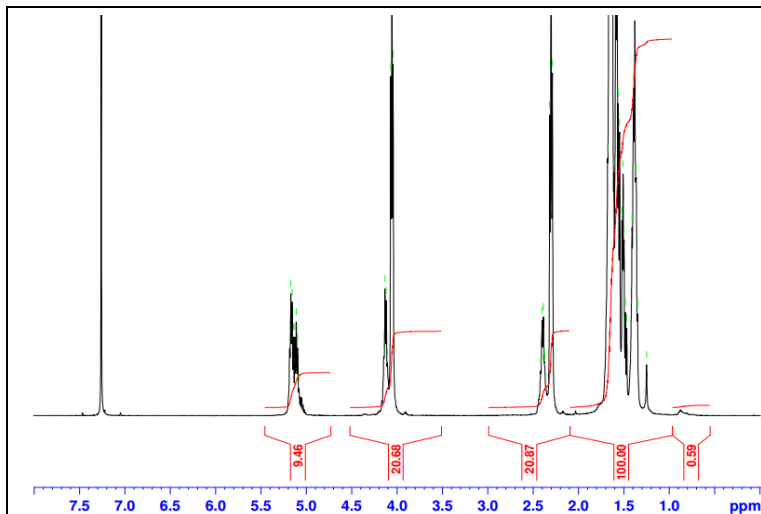


# No. AP015

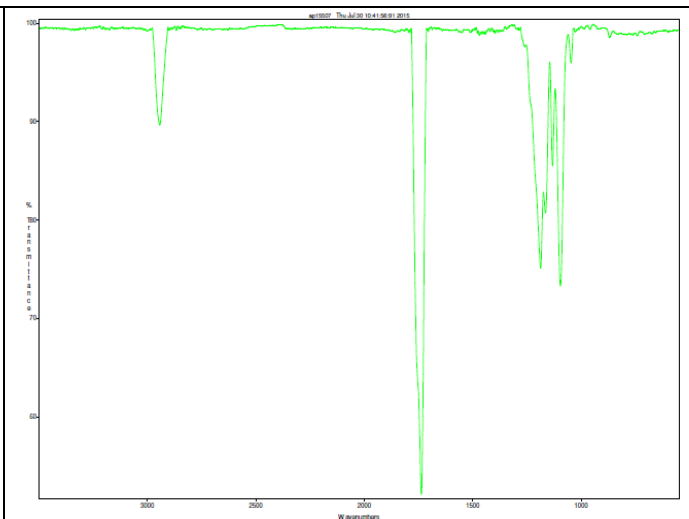
# Certificate of Analysis



Product Name: Poly(L-Lactic-co-caprolactone) Copolymer (50:50 LA:CL,  $M_n$ : 75,000-85,000 Da) (Lot#: 50727AHT)

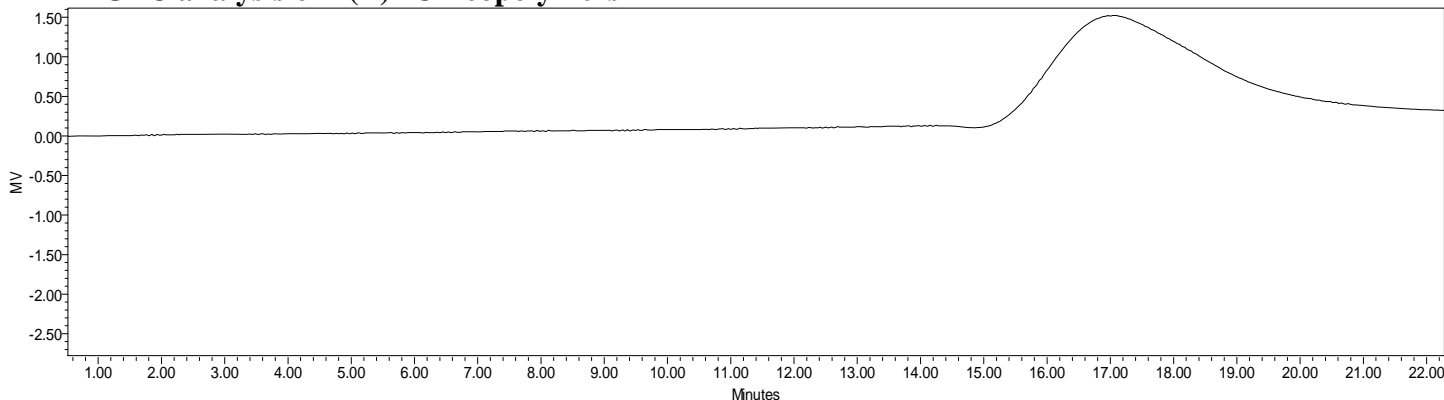


H-NMR Spectrum of P(L)LCL copolymers in  $CDCl_3$  (Varian Inova 500 MHz instrument), NMR of P(L)LCL copolymers:  
LA/CL = 48%/52% molar ratio (37%/63% w/w)



FTIR Analysis: Collected from cast-film on KBR salt-plate placed in Satellite FTIR (Thermo-Mattson) and analyzed in transmission mode.

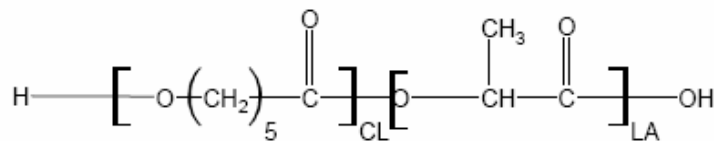
## • GPC analysis of P(L)LCL copolymers



Analysis Method: Waters Breeze 2 system with 1 ml/min DCM flow across three Phenogel 5um columns (Phenomenex). Detection via refractive index, calibrated against polystyrene standards.

Polymer	$M_n$ (from GPC)	$M_w$ (from GPC)	PDI
P(L)LCL	75,622	98,299	1.30

## • Structure of P(L)LCL copolymers



Material provided for research use only. Not for human use.

PolySciTech Division of Akina, Inc. | 3495 Kent Avenue, West Lafayette, IN 47906  
765-464-0390 | www.polysciotech.com

For research use only.