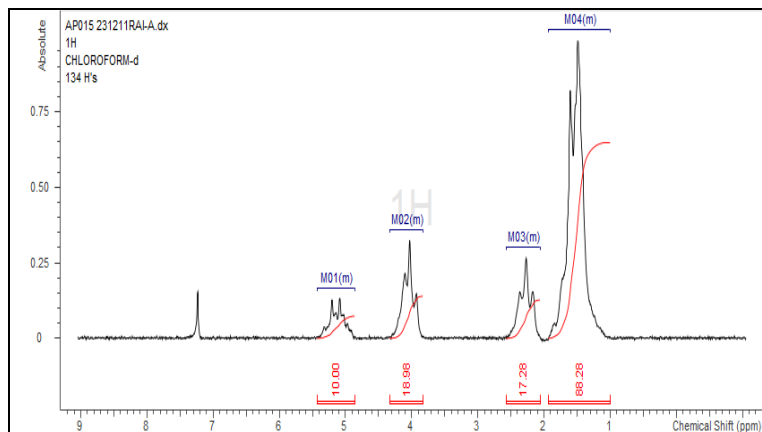


No. AP015

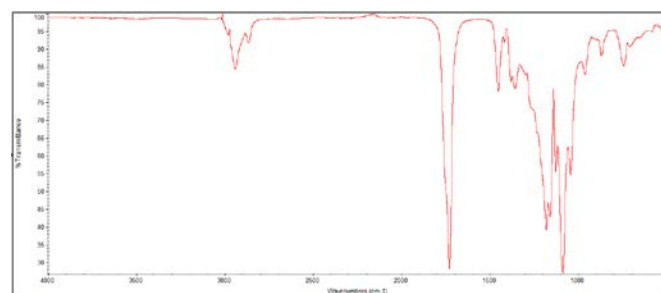
Certificate of Analysis



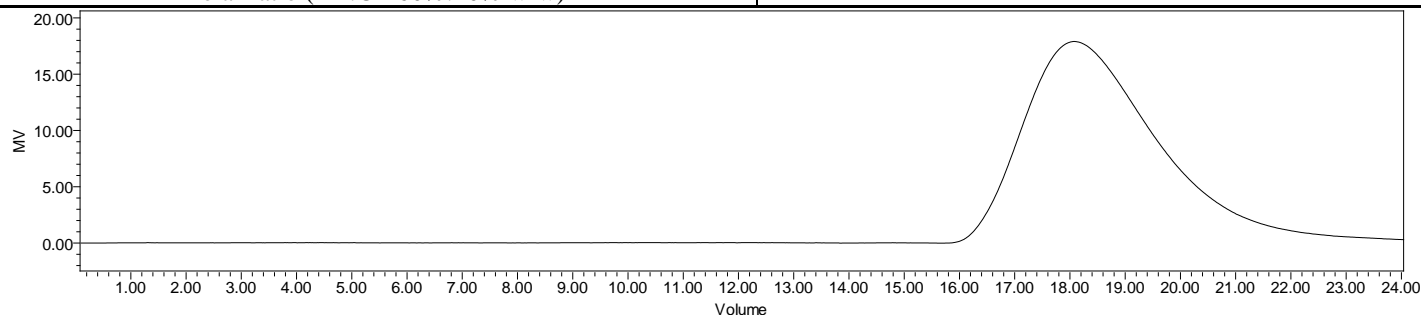
Product Name: Poly(L-Lactic-co-caprolactone) Copolymer (50:50 LA:CL),
M_n: 75,000-85,000 Da) (Lot#: 231211RAI-A)



H-NMR Spectrum of copolymers in CDCl₃ (NMReady-60e, Nanalysis 60 MHz) NMR of PLCL Copolymer: LA:CL 51%:49% molar ratio (LA:CL 60%:40% w-w)



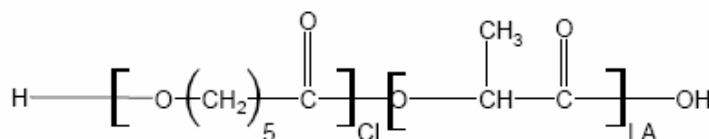
FTIR Analysis: Collected from IS5 ID7-ATR spectrometer (ThermoFisher) and analyzed in transmission mode.



GPC-ES Analysis Method: Waters Breeze 2 system with 1 ml/min THF flow across three GPC columns. Detection via refractive index, calibrated against polystyrene standards.

Polymer	M _n (from GPC)	M _w (from GPC)	PDI
PLCL	75,393	99,711	1.32

• Structure of PLCL copolymers



Approved By:
Amie Tyler
Quality Manager