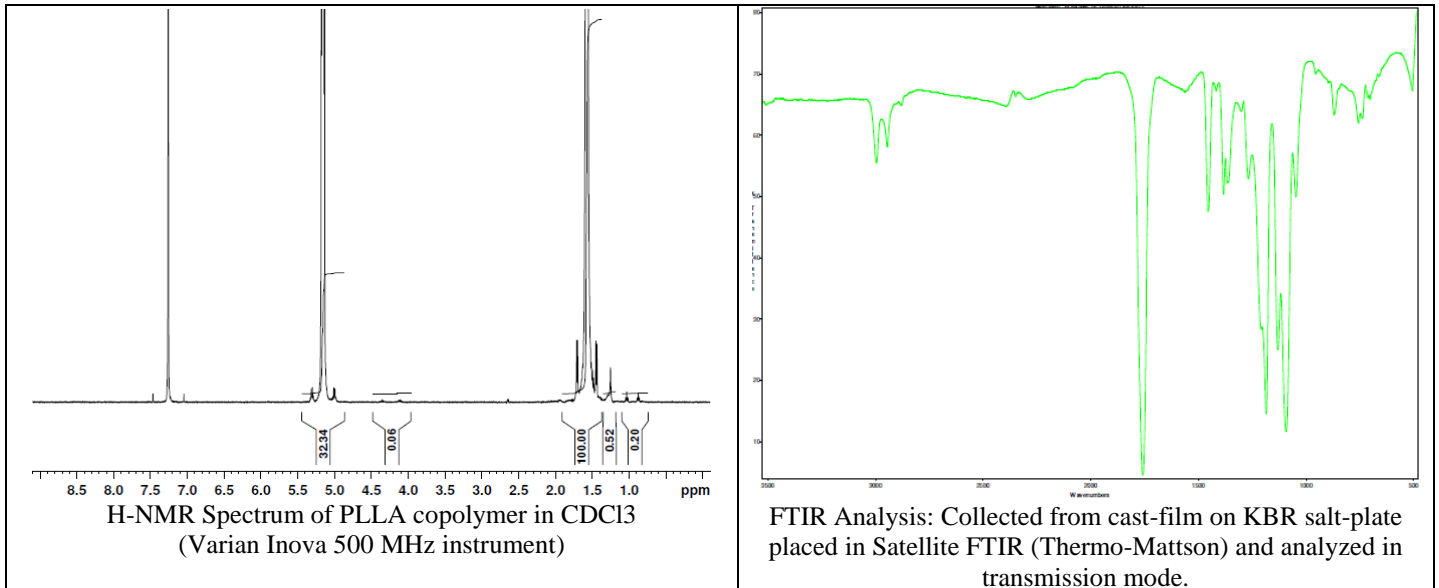
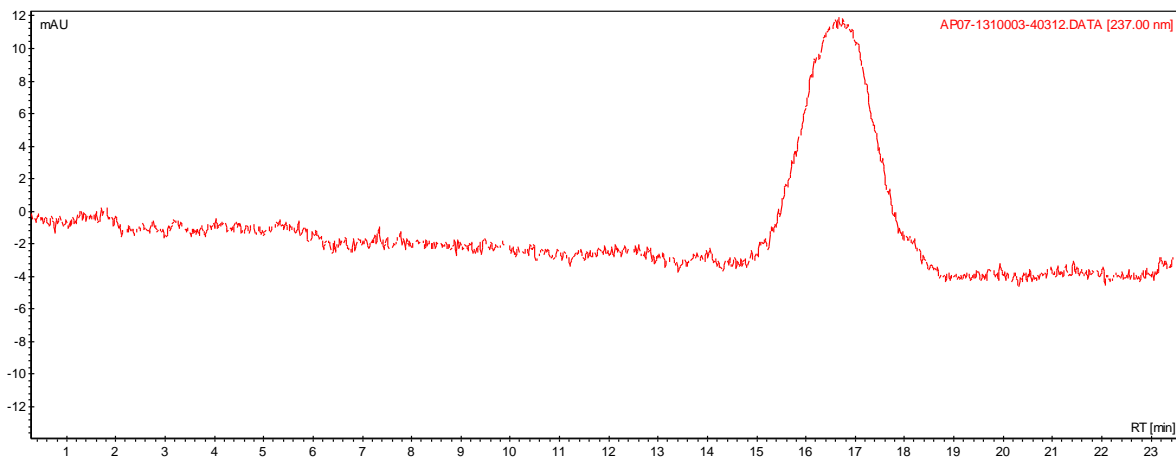


No. AP07 Certificate of Analysis

Product Name: Poly(L-lactic) acid polymer acid endcapped (M_n 125,00-150,000 Da)
(Lot#: 1310003)

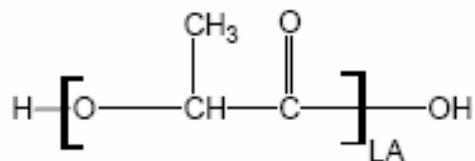


- **GPC analysis of PLLA polymer**



Polymer	M_n (from GPC)	M_w (from GPC)	PDI
PLLA	125,354	212,453	1.69

- **Structure of PLLA polymer**



This specific batch is distributed by Akina, Inc. on behalf of original manufacturer.
Quality testing was performed in-house by Akina, Inc. prior to sale and is as shown here.

This batch manufactured in China.
PolySciTech Division of Akina, Inc. | 3495 Kent Avenue, West Lafayette, IN 47906
765-464-0390 | www.polysciotech.com

For research use only.