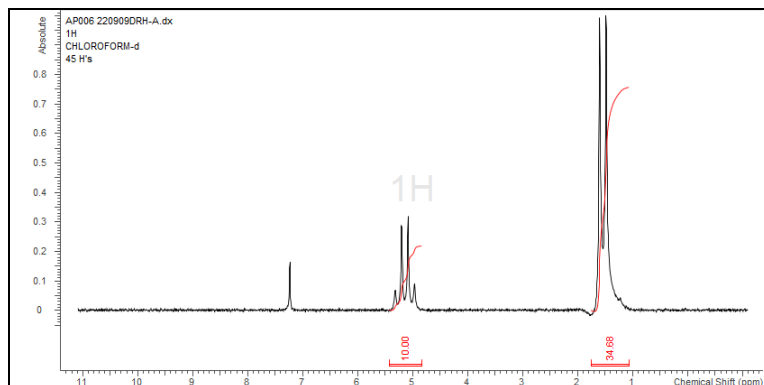


# No. AP006

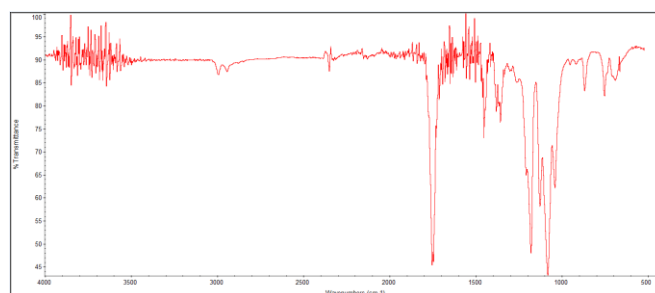
# Certificate of Analysis



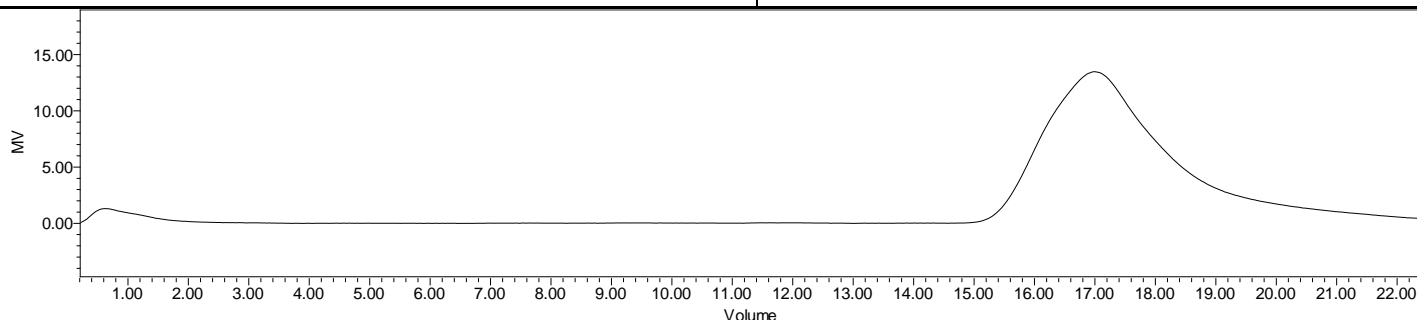
Product Name: Poly(L-lactide) acid endcap ( $M_n$  100,000-200,000 Da)  
(Lot #220909DRH-A)



H-NMR Spectrum of copolymers in CDCl<sub>3</sub> (NMReady-60e, Nanalysis 60 MHz) NMR of PLLA Copolymer



FTIR Analysis: Collected from Nicolet Avatar 380 spectrometer with ATR Smart Orbit and analyzed in transmission mode.



GPC-ES Analysis Method: Waters Breeze 2 system with 1 ml/min THF flow across three GPC columns. Detection via refractive index, calibrated against polystyrene standards.

Polymer	$M_n$ (from GPC)	$M_w$ (from GPC)	PDI
PLLA	156,272	255,824	1.64

- **Structure of PLLA copolymers**

