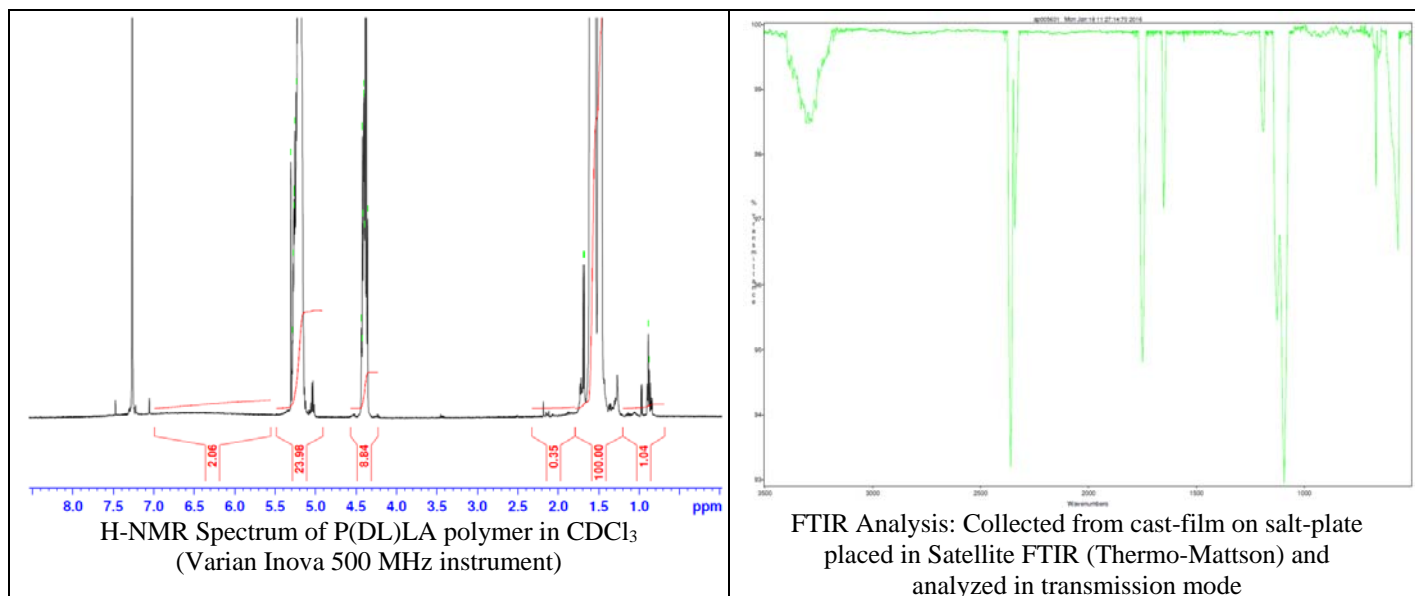


No. AP005

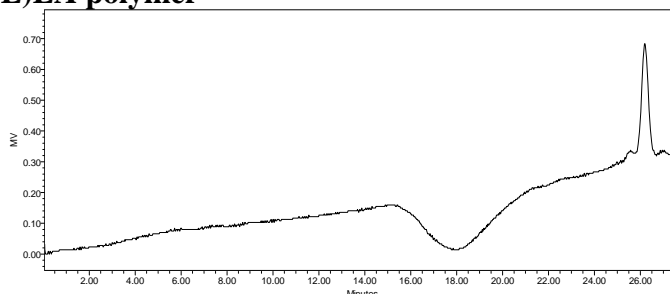
# Certificate of Analysis



Product Name: Poly(DL-lactide) acid endcap ( $M_n$ : 1,000-5,000 Da) (Lot#: 60112JSG-A)



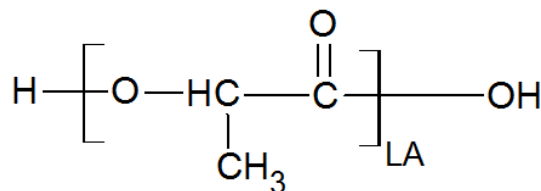
- **GPC analysis of P(DL)LA polymer**



Analysis Method: Waters Breeze 2 system with 1 ml/min DCM flow across three Phenogel 5 $\mu$ m columns. Detection via RI, calibrated against polystyrene standards.

Polymer	$M_n$ (from GPC)	$M_w$ (from GPC)	PDI
P(DL)LA	1250	3523	2.82

- **Structure of P(D)LA polymer**



Material provided for research use only. Not for human use.

PolySciTech Division of Akina, Inc. | 3495 Kent Avenue, West Lafayette, IN 47906  
765-464-0390 | www.polysciotech.com

For research use only.