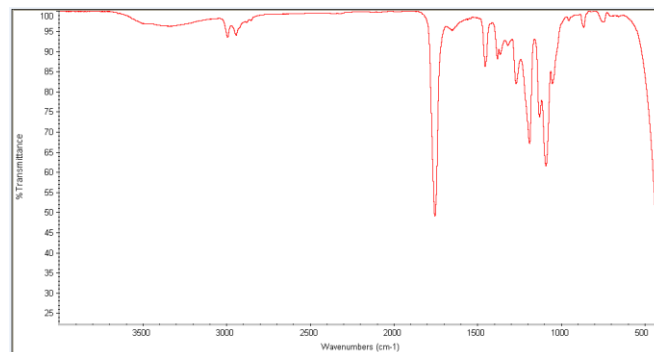
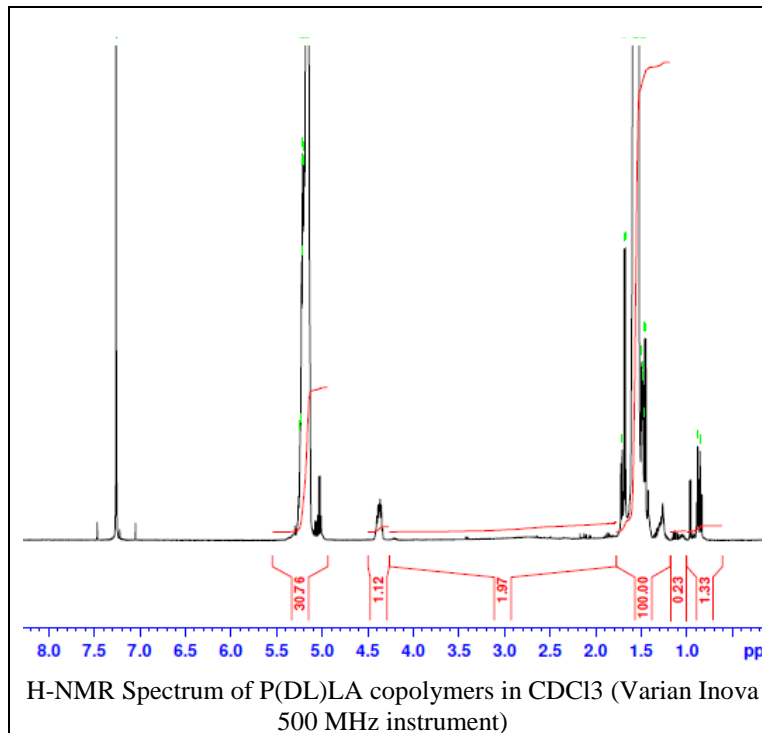


No. AP005

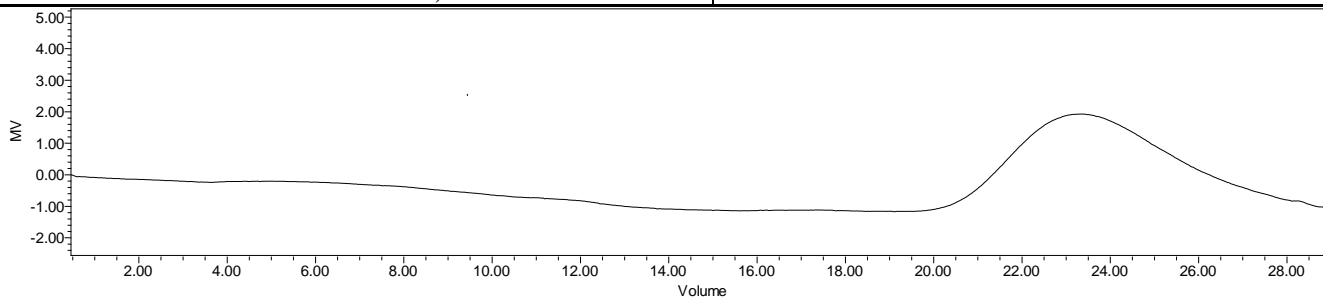
# Certificate of Analysis



Product Name: Poly(DL-lactide) acid endcap ( $M_n$ : 1,000-5,000 Da)  
(Lot#: 180306SLG-A)



FTIR Analysis: Collected from cast-film on KBr salt-plate placed in Nicolet Avatar spectrometer and analyzed in transmission mode.



GPC Analysis Method: Waters Breeze 2 system with 1 ml/min THF flow across three GPC columns. Detection via refractive index, calibrated against polystyrene standards.

Polymer	$M_n$ (from GPC)	$M_w$ (from GPC)	PDI
P(DL)LA	3,470	5,211	1.50

- Structure of P(D)LA polymer

