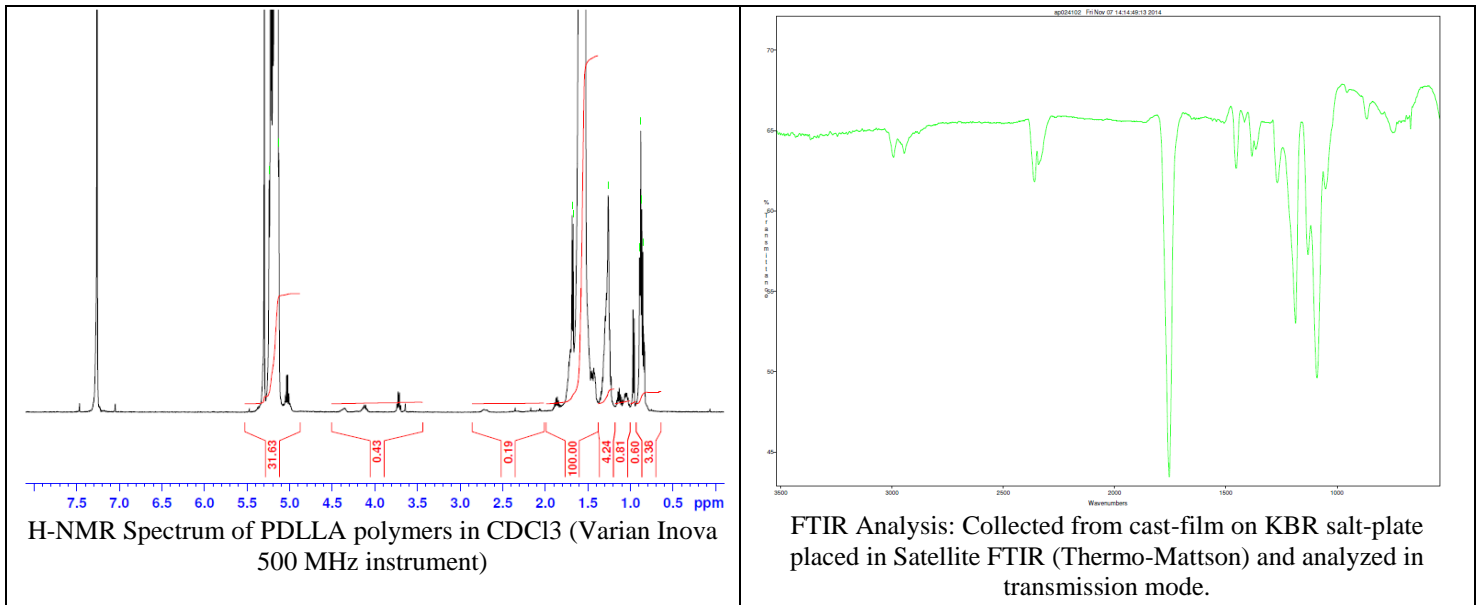
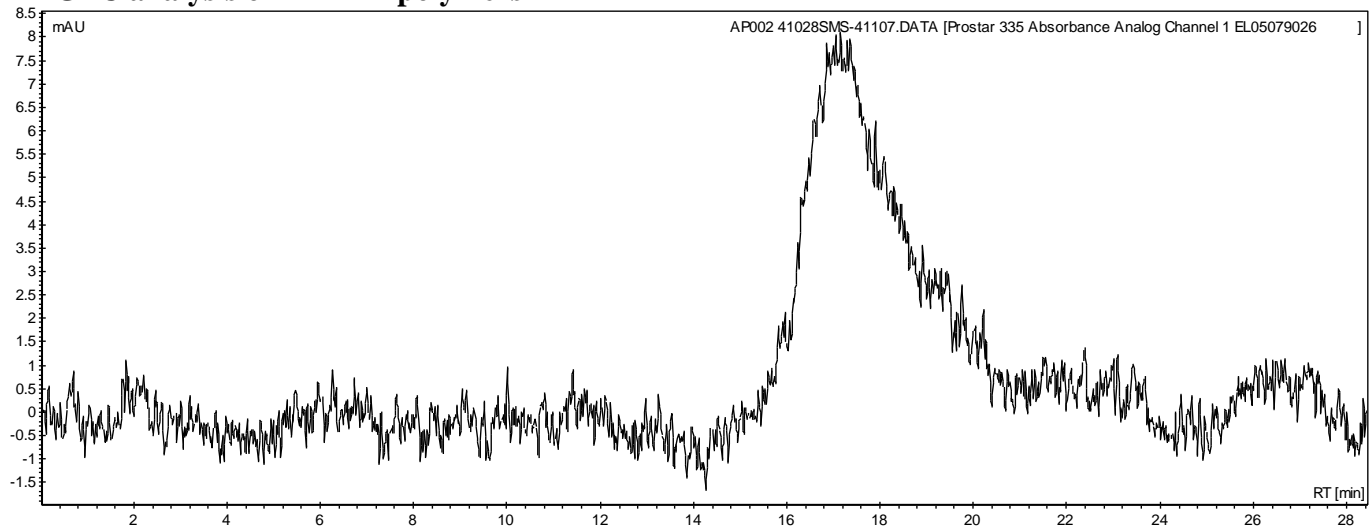


# No. AP002 Certificate of Analysis

Product Name: Poly(DL-lactic acid) ester endcapped (Mn: 25,000-35,000 Da) (Lot#: 41028SMS)



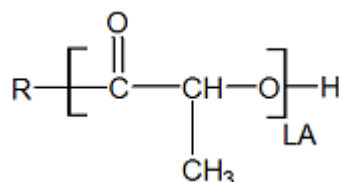
- GPC analysis of PDLLA polymers**



Analysis Method: Varian Prostar system with 1 ml/min DCM flow across two 5 $\mu$ m Phenogel columns and one Resipore column (Agilent). Detection via UV/Vis, calibrated against polystyrene standards.

Polymer	Mn (from GPC)	Mw (from GPC)	PDI
PDLLA	34,014	78,819	2.32

- Structure of PDLLA polymers**



Material provided for research use only. Not for human use.

PolySciTech Division of Akina, Inc. | 3495 Kent Avenue, West Lafayette, IN 47906

765-464-0390 | www.polysciotech.com

For research use only.