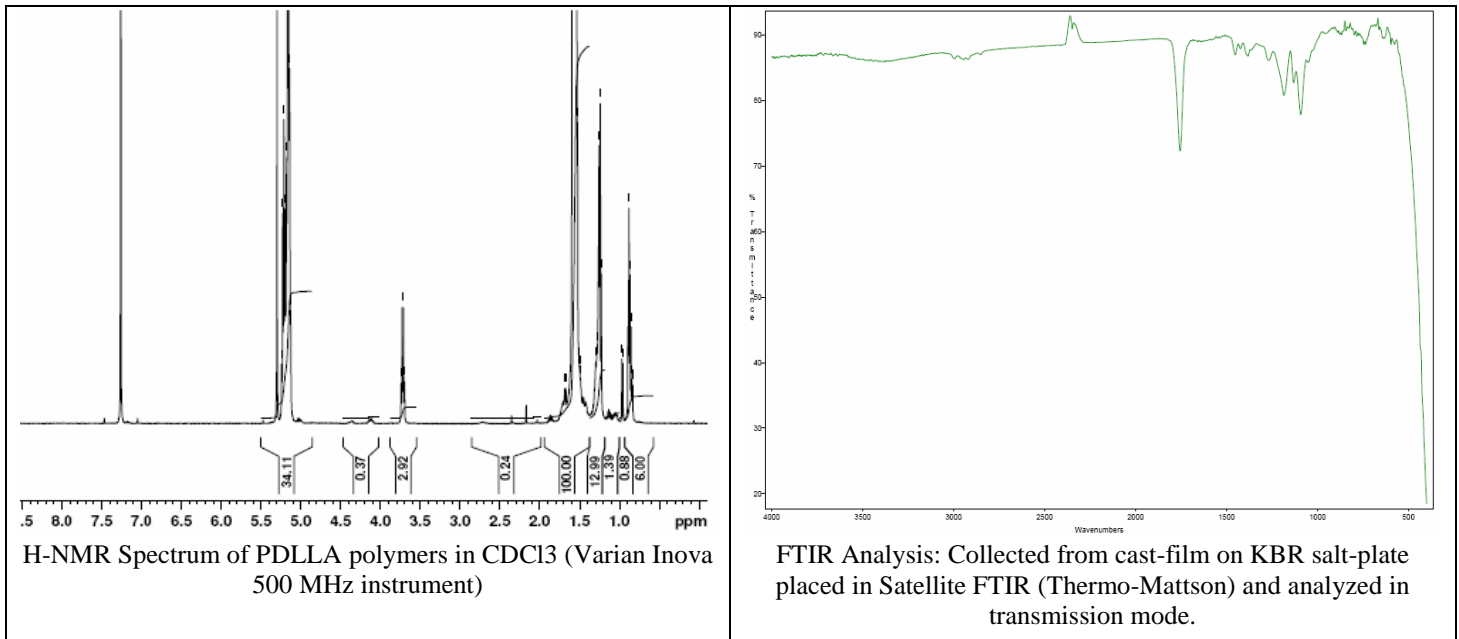
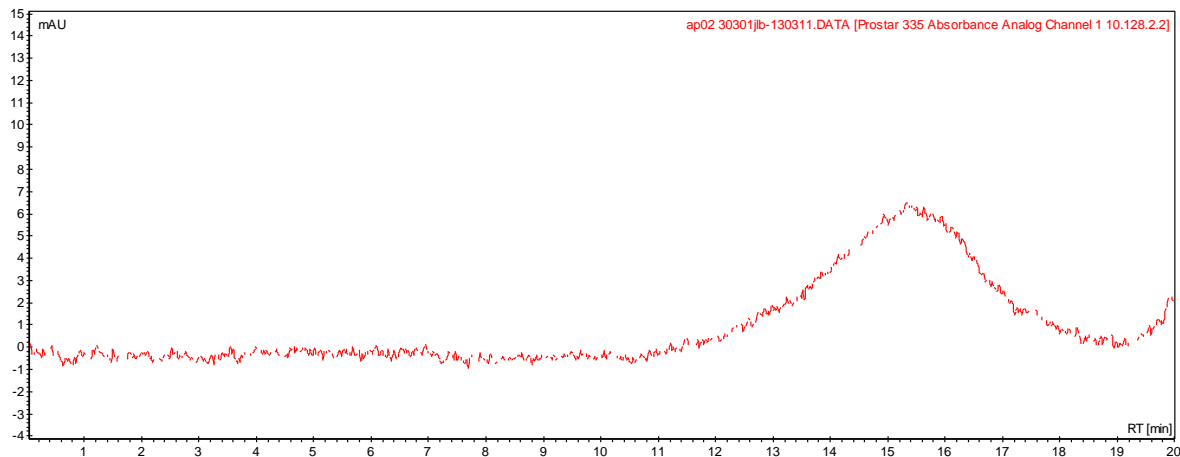


No. AP02 Certificate of Analysis

Product Name: Poly(DL-lactic acid) ester endcapped (Mn: 25,000-35,000 Da) (Lot#: 30301JLB)



- **GPC analysis of PDLLA polymers**



Analysis Method: Varian Prostar system with 1 ml/min DCM flow across two PLgel Resipore columns (Agilent). Detection via UV/Vis, calibrated against polystyrene standards

Polymer	Mn (from GPC)	Mw (from GPC)	PDI
PDLLA	25,053	65,117	2.60

- **Structure of PDLLA polymers**

