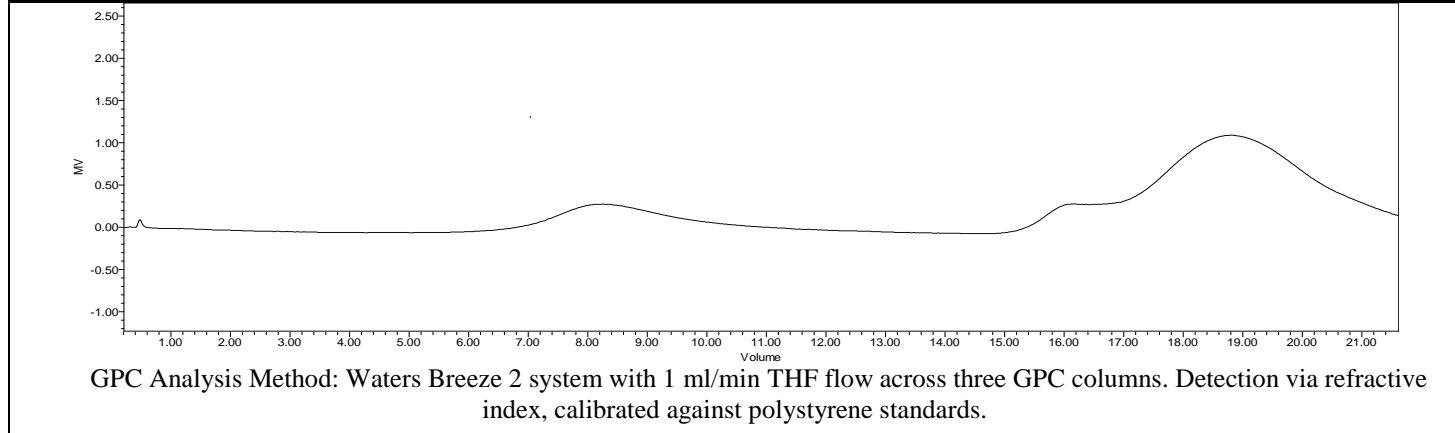
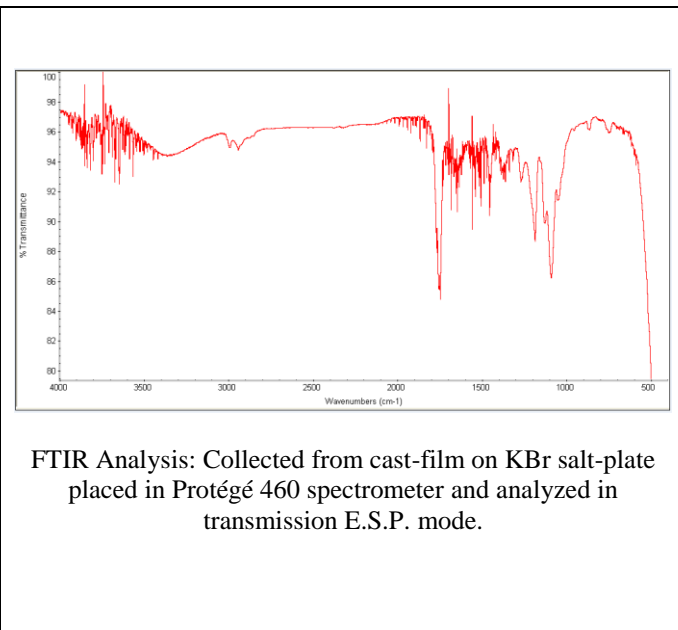
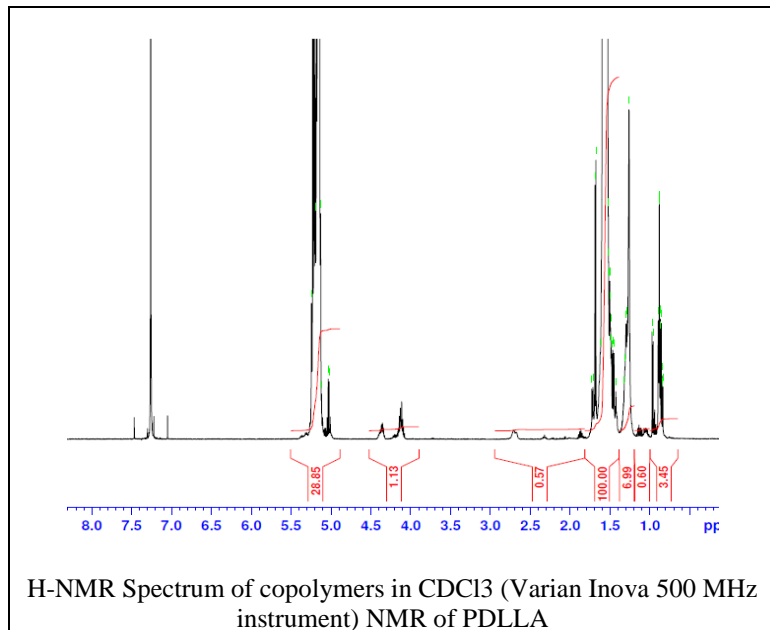


No. AP001

# Certificate of Analysis



Product Name: Poly(DL-lactic acid) ester endcapped (Mn: 10,000-15,000 Da)  
(Lot#: 171006SJH-B)



| Polymer | M <sub>n</sub> (from GPC) | M <sub>w</sub> (from GPC) | PDI  |
|---------|---------------------------|---------------------------|------|
| PDLA    | 10,419                    | 14,301                    | 1.37 |

\*- from MFG data

- Structure of PDLA polymers

