

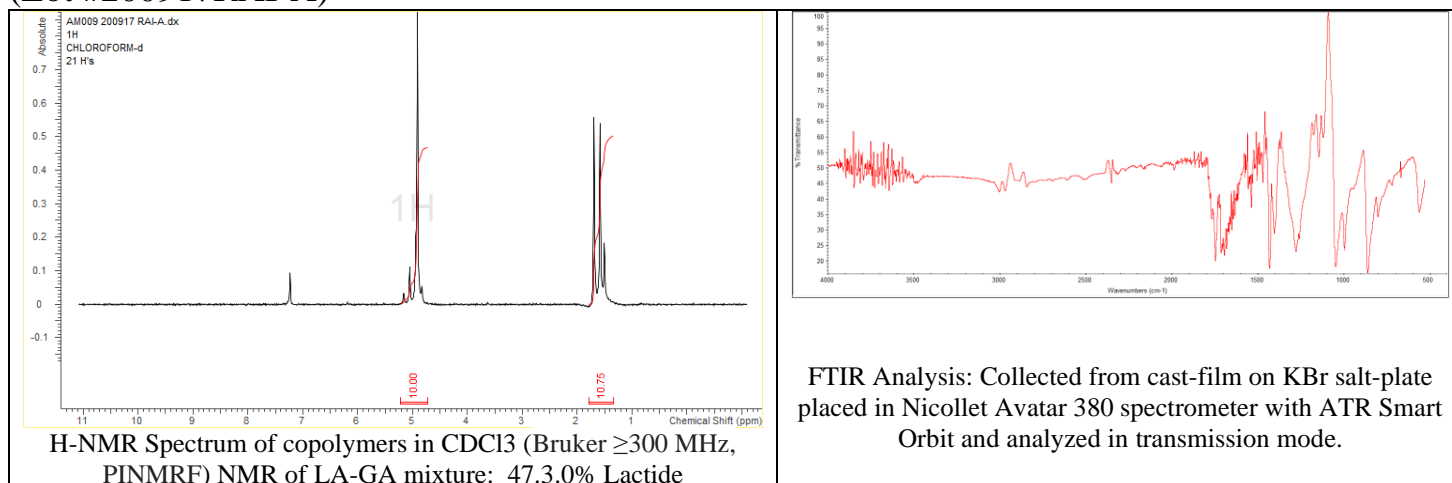
No. AM009

Certificate of Analysis

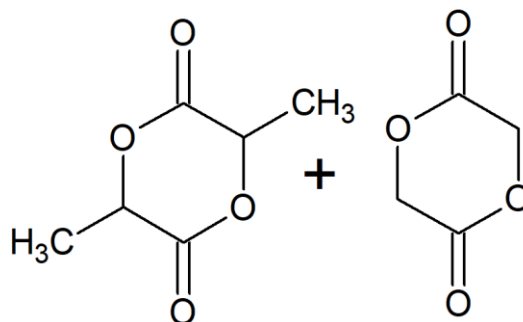


Product Name: DL-Lactide/Glycolide monomeric co-mixture

(Lot #200917RAI-A)



• Structure



- **About:** Dry-powder product is codissolved and dried mixture of monomers provided as a uniform powder. For synthesis, use as an equivalent to equal parts of lactide and glycolide (i.e. each 1 gram of premix is equivalent to ~ 0.5 grams, each, of lactide and glycolide). Can be used in ring-opening polymerization processes for uniform addition of both monomers.