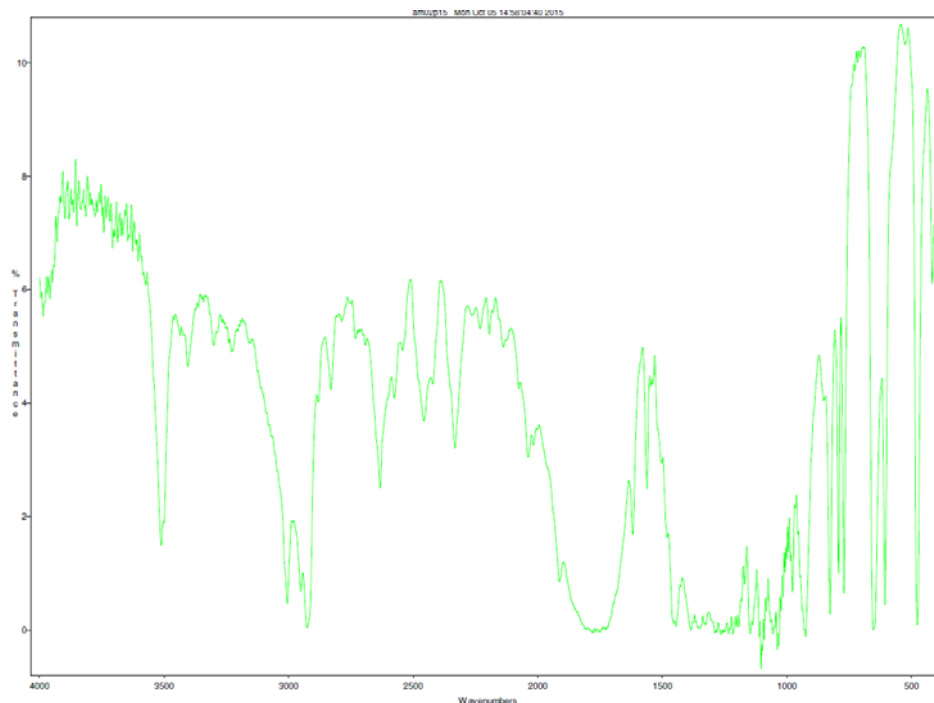


Product Name: (D,L)-Lactide (>99% pure, white crystalline solid*) (Lot#: P1504030)

Properties*	Result*	Specification*
Color	White, crystalline solid	White, crystalline solid
Free acid	0.09 meq/kg	≤ 1.00 meq/kg
Melt point	125C	122 – 126C
Moisture content	32 ppm	<200 ppm
Solvent content	949 ppm	<2000 ppm

*-per MFG provided information

- **FTIR analysis of (D,L)-Lactide monomer**



Analysis Method: Collected from KBR salt-pellet placed in Satellite FTIR (Thermo-Mattson) and analyzed in transmission mode.

- **Structure of (D,L)-Lactide monomer**

