

**No. AM002**

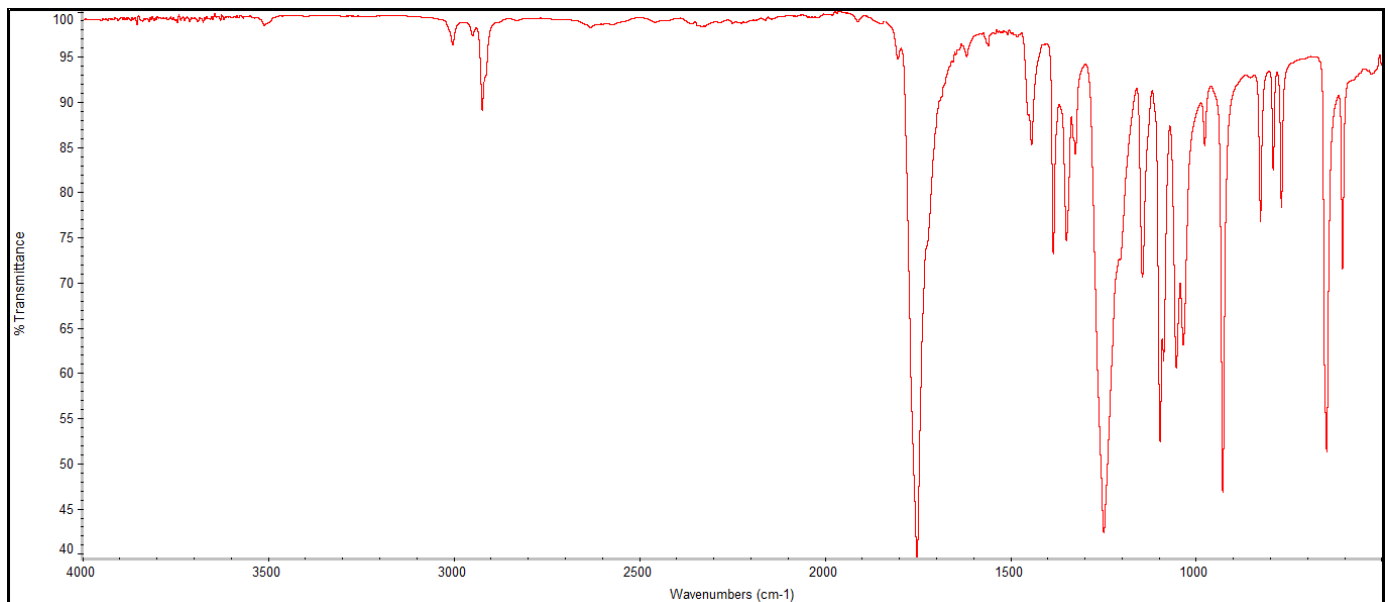
# Certificate of Analysis

Product Name: (D,L)-Lactide (99.6% pure, white crystalline solid\*) (Lot#: 02221100010)

Properties*	Result*	Specification*
Color	White, crystalline solid	White, crystalline solid
Free acid	0.36 meq/kg	≤ 1.00 meq/kg
Melt point	124°C	122 – 126°C
Moisture content	101 ppm	<200 ppm
Solvent content	645 ppm	<2000 ppm

\*-per MFG provided information

- FTIR analysis of (D,L)-Lactide monomer**



Analysis Method: Collected from IS5 ID7-ATR spectrometer (ThermoFisher) and analyzed in transmission mode.

- Structure of (D,L)-Lactide monomer**

