

No. AM002

Certificate of Analysis

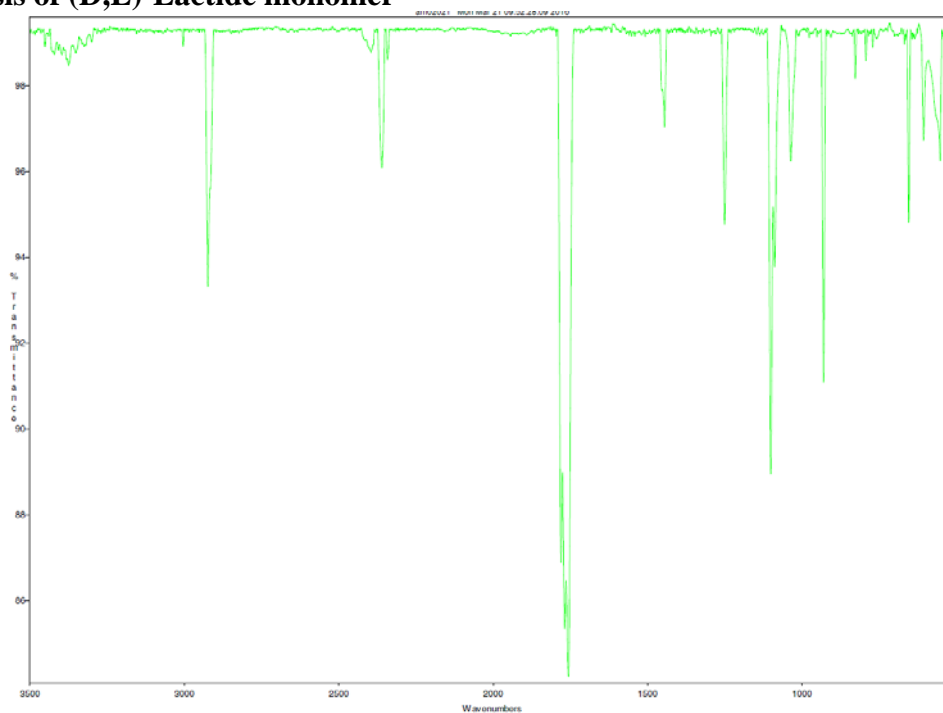


Product Name: (D,L)-Lactide (>99% pure, white crystalline solid*) (Lot#: 02151200046)

Properties*	Result*	Specification*
Color	White, crystalline solid	White, crystalline solid
Free acid	0.05 meq/kg	≤ 1.00 meq/kg
Melt point	125C	122 – 126C
Moisture content	18 ppm	<200 ppm
Solvent content	1189 ppm	<2000 ppm
Purity	99.9%	≥ 99.5% by area

*-per MFG provided information

- FTIR analysis of (D,L)-Lactide monomer**



Analysis Method: Collected from KBR salt-pellet placed in Satellite FTIR (Thermo-Mattson) and analyzed in transmission mode.

- Structure of (D,L)-Lactide monomer**

