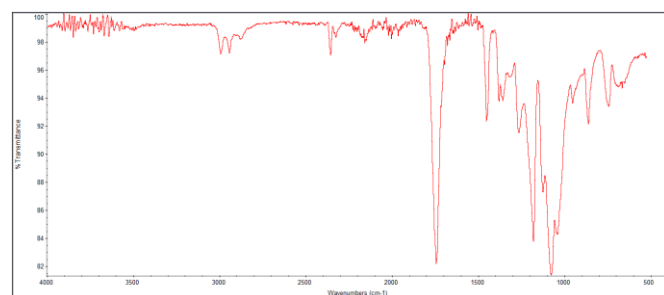
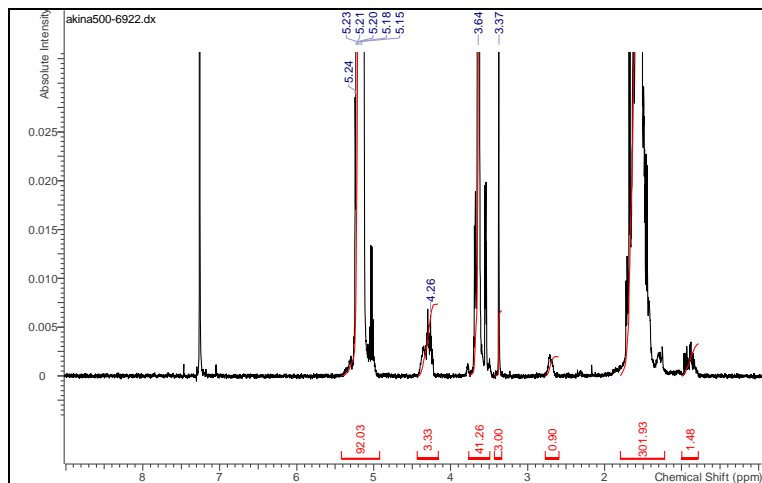


# No. AK171

# Certificate of Analysis

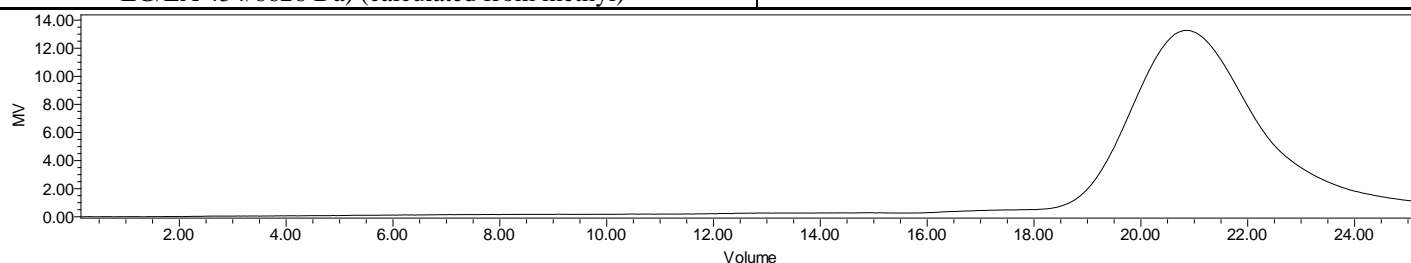


Product Name: Methoxy Poly(ethylene glycol)-b-Poly(DL-lactide) (500-6000 Da) (Lot#: 220406RAI-B)



FTIR Analysis: Collected from Nicolet Avatar 380 spectrometer with ATR Smart Orbit and analyzed in transmission mode.

H-NMR Spectrum of copolymers in CDCl<sub>3</sub> (Bruker ≥300 MHz, PINMRF) NMR of mPEG-PDLLA copolymer: EG/LA =10/92 (Mn EG/LA 454/6626 Da) (calculated from methyl)



GPC-ES Analysis Method: Waters Breeze 2 system with 1 ml/min THF flow across three GPC columns. Detection via refractive index, calibrated against polystyrene standards.

Polymer	M <sub>n</sub> (from GPC)	M <sub>w</sub> (from GPC)	PDI
mPEG-PDLLA	9902	16,007	1.62
PEG precursor*		463*	

\*- from MFG data

## • Structure of mPEG-PDLLA copolymer

