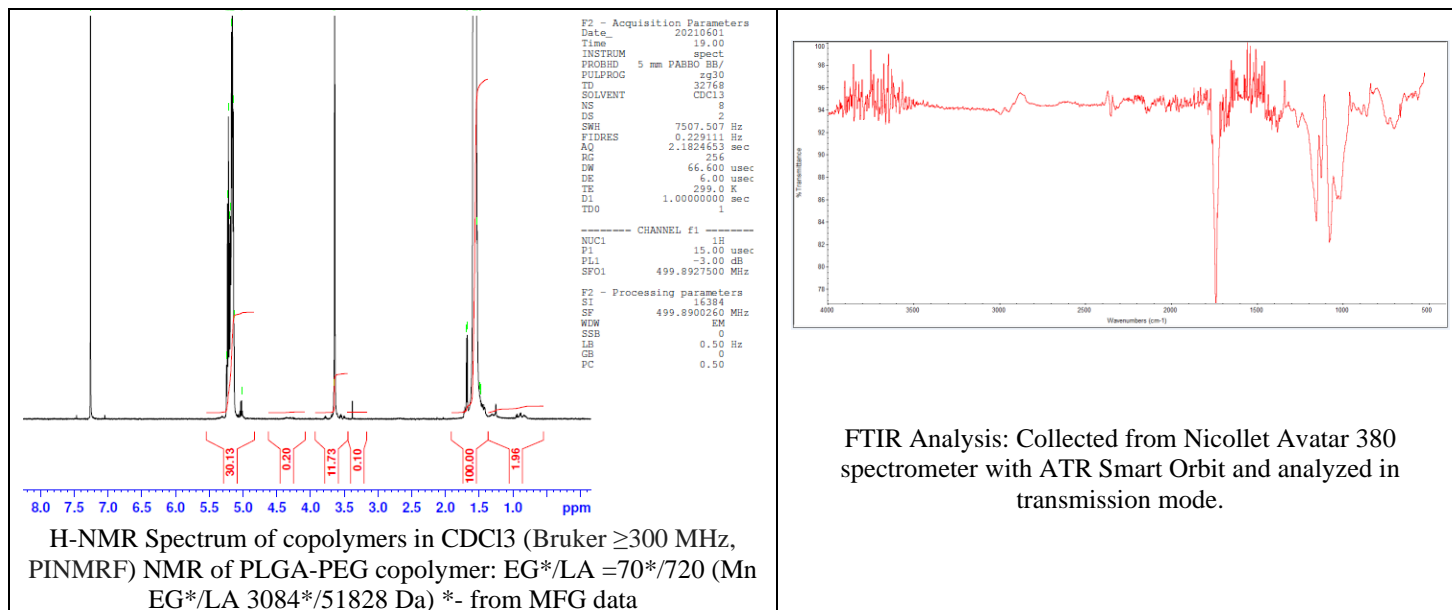


No. AK167

Certificate of Analysis

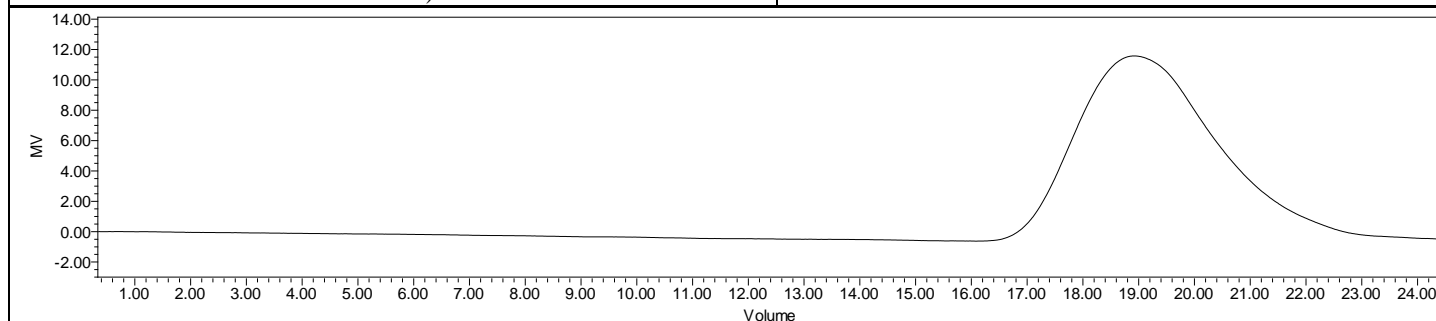


Product Name: Methoxy Poly(ethylene glycol)-*b*-Poly(D,L-lactide)
copolymers (MW ~3,000-50,000 Da) (Lot#: 210524AHT-A)



FTIR Analysis: Collected from Nicolet Avator 380 spectrometer with ATR Smart Orbit and analyzed in transmission mode.

H-NMR Spectrum of copolymers in CDCl₃ (Bruker ≥300 MHz, PINMRF) NMR of PLGA-PEG copolymer: EG*/LA =70*/720 (Mn EG*/LA 3084*/51828 Da) *- from MFG data



GPC Analysis Method: Waters Breeze 2 system with 1 ml/min THF flow across three GPC columns. Detection via refractive index, calibrated against polystyrene standards.

Polymer	M _n (from GPC)	M _w (from GPC)	PDI
PDLLA-PEG	33,930	55,820	1.64
PEG precursor*	3072*		

*- from MFG data

- Structure of mPEG-P(D,L)LA copolymers

