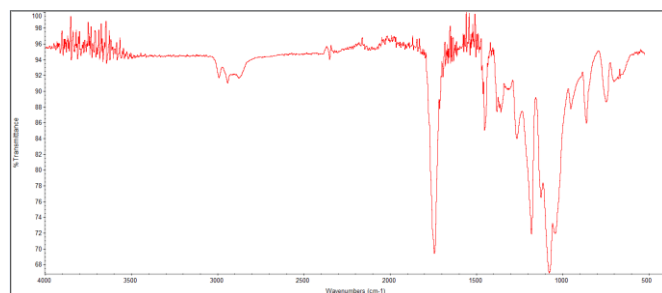
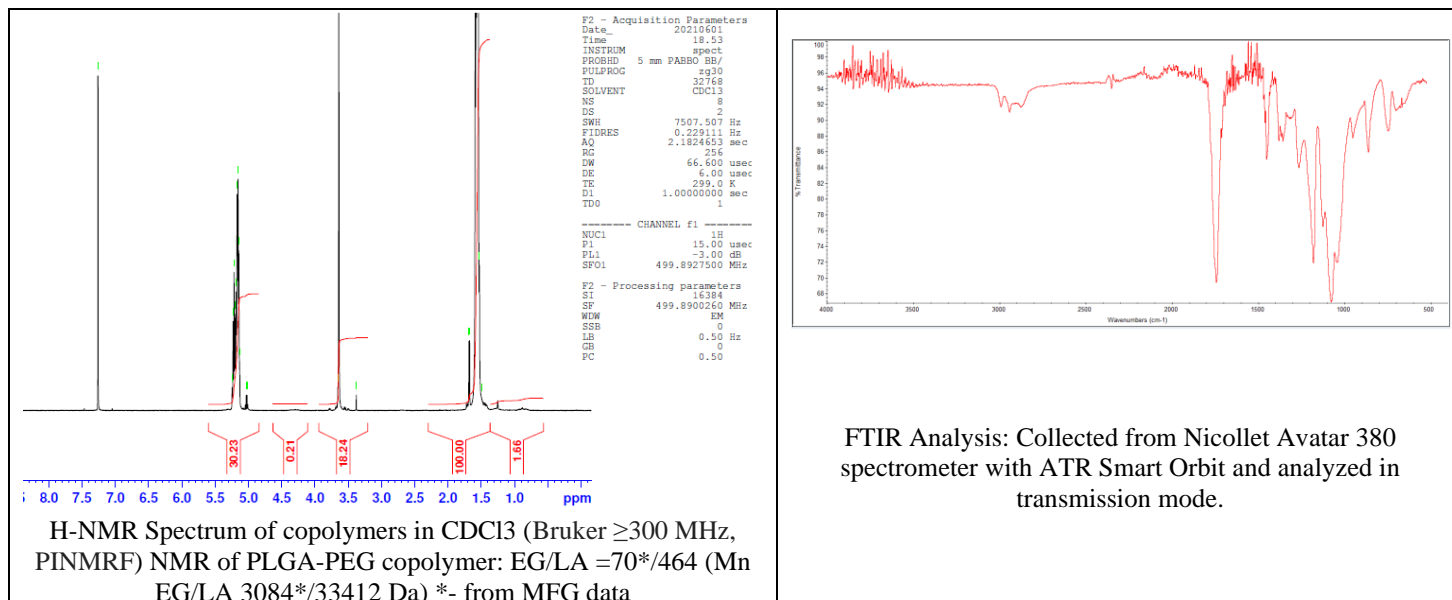


No. AK166

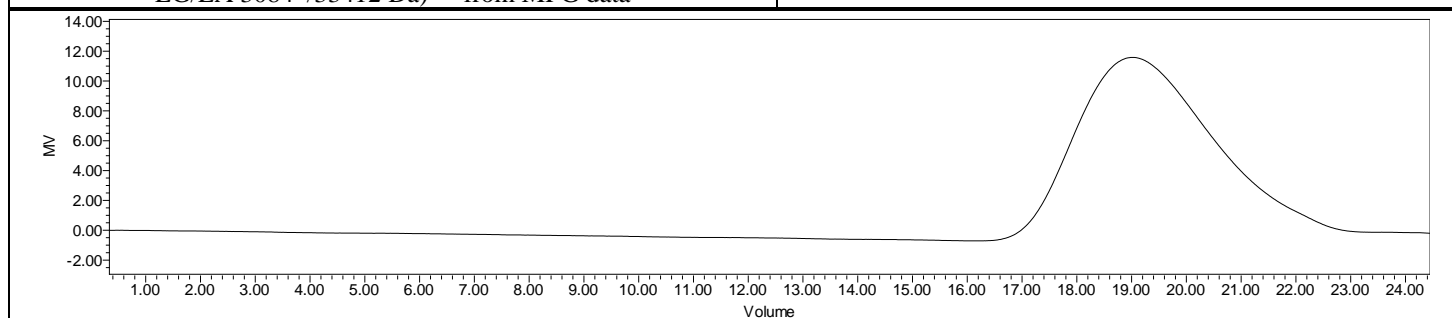
Certificate of Analysis



Product Name: Methoxy Poly(ethylene glycol)-*b*-Poly(D,L-lactide)
copolymers (MW ~3,000-35,000 Da) (Lot#: 210521RAI-C)



FTIR Analysis: Collected from Nicolet Avatar 380 spectrometer with ATR Smart Orbit and analyzed in transmission mode.



GPC Analysis Method: Waters Breeze 2 system with 1 ml/min THF flow across three GPC columns. Detection via refractive index, calibrated against polystyrene standards.

Polymer	M _n (from GPC)	M _w (from GPC)	PDI
PDLLA-PEG	28,915	51,119	1.77
PEG precursor*	3072*		

*- from MFG data

Structure of mPEG-P(D,L)LA copolymers

