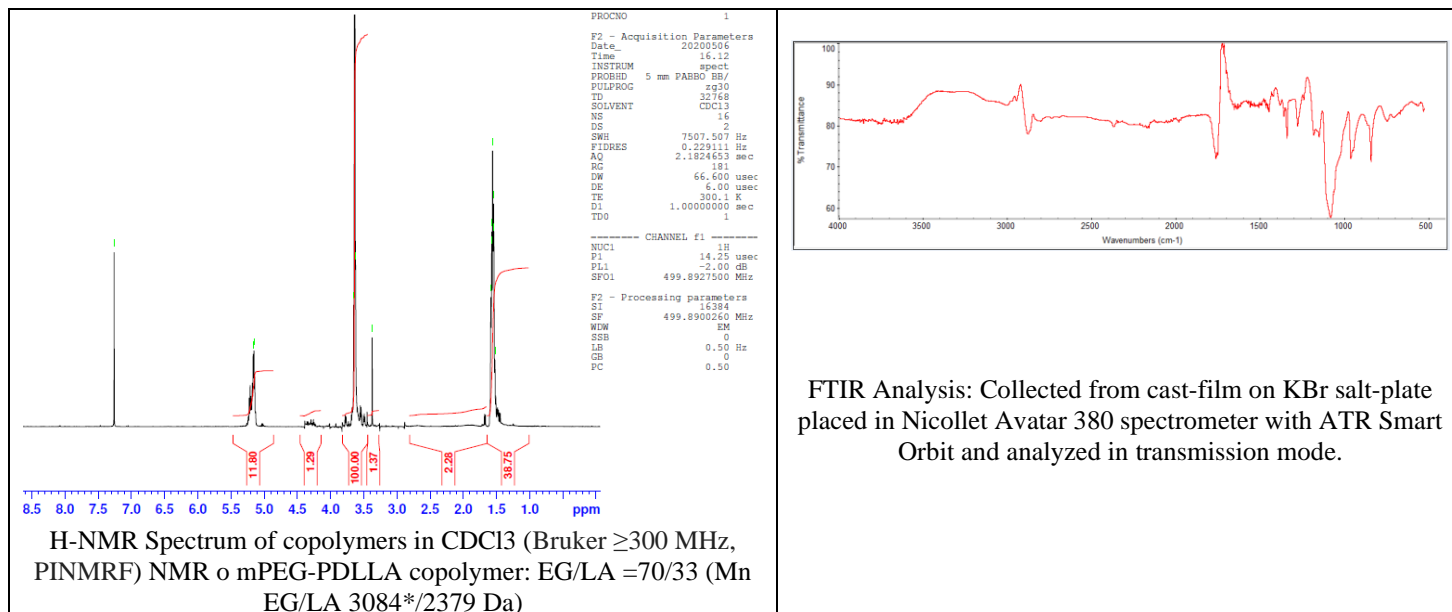


# No. AK158

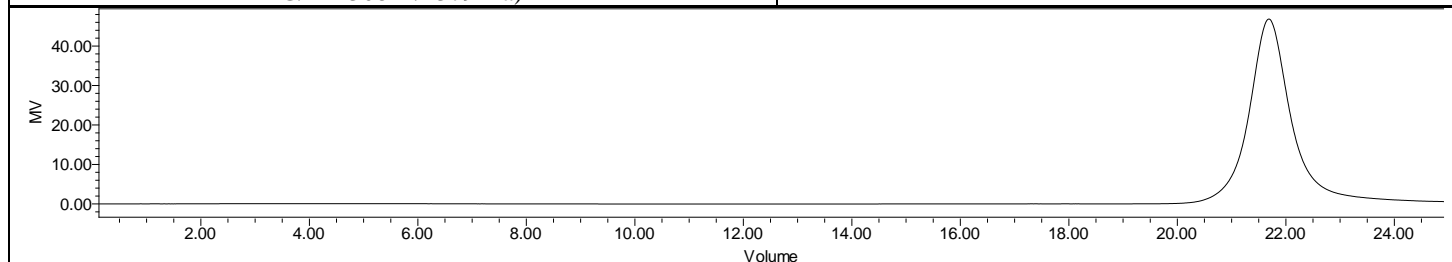
# Certificate of Analysis



Product Name: Methoxy Poly(ethylene glycol)-*b*-Poly(D,L-lactide)  
copolymers (MW ~ 3000-2500 Da) (Lot#: 200501RAI-B)



FTIR Analysis: Collected from cast-film on KBr salt-plate placed in Nicolet Avatar 380 spectrometer with ATR Smart Orbit and analyzed in transmission mode.



GPC Analysis Method: Waters Breeze 2 system with 1 ml/min THF flow across three GPC columns. Detection via refractive index, calibrated against polystyrene standards.

Polymer	M <sub>n</sub> (from GPC)	M <sub>w</sub> (from GPC)	PDI
mPEG-PDLLA	7064	7667	1.08
PEG precursor*		3072*	

\*- from MFG data

## Structure of mPEG-P(D,L)LA copolymers

