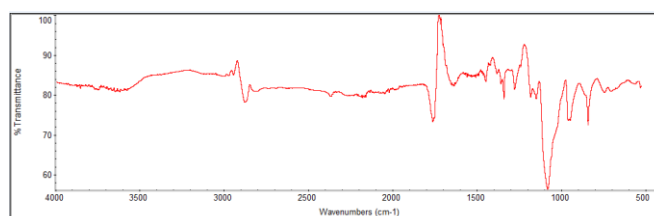
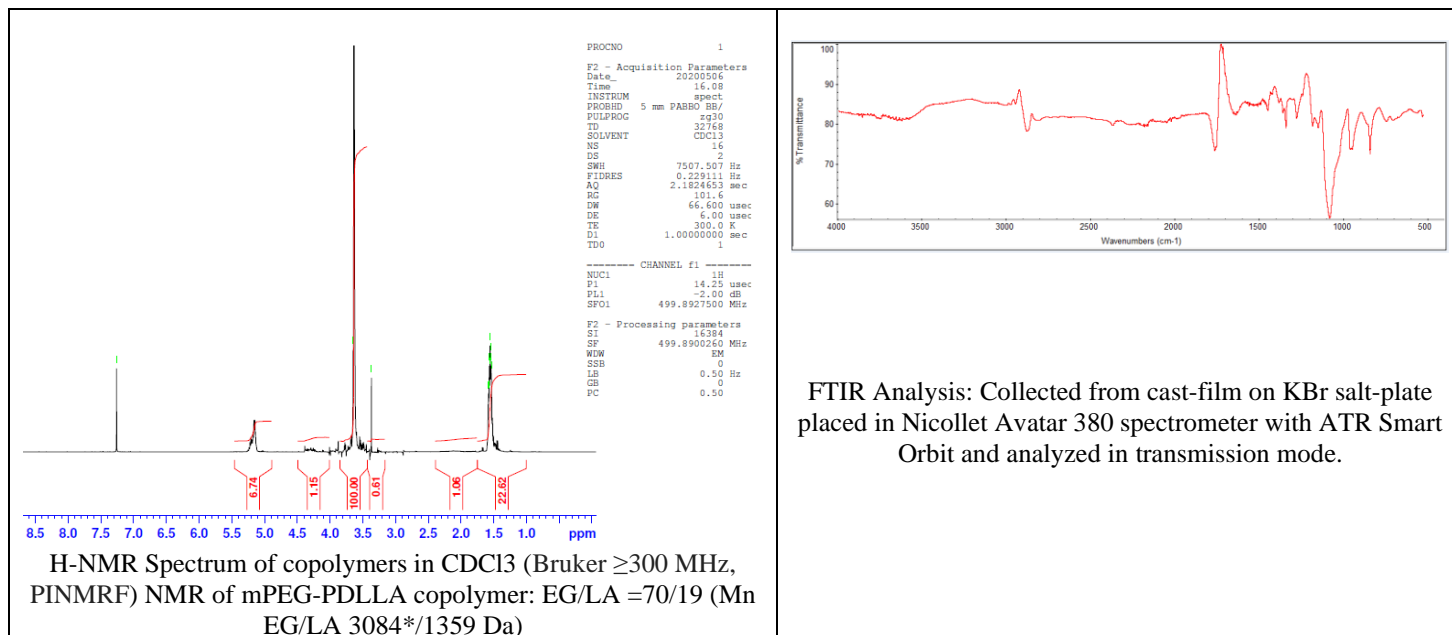


No. AK157

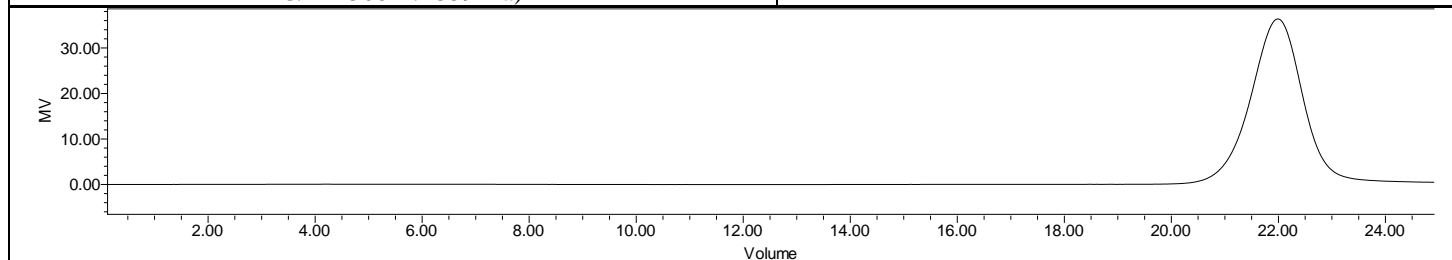
Certificate of Analysis



Product Name: Methoxy Poly(ethylene glycol)-*b*-Poly(D,L-lactide)
copolymers (MW ~3000-1500 Da) (Lot#: 200501RAI-A)



FTIR Analysis: Collected from cast-film on KBr salt-plate placed in Nicolet Avatar 380 spectrometer with ATR Smart Orbit and analyzed in transmission mode.



GPC Analysis Method: Waters Breeze 2 system with 1 ml/min THF flow across three GPC columns. Detection via refractive index, calibrated against polystyrene standards.

Polymer	M _n (from GPC)	M _w (from GPC)	PDI
mPEG-PDLLA	5803	6449	1.11
PEG precursor*		3072*	

*- from MFG data

- Structure of mPEG-P(D,L)LA copolymers

