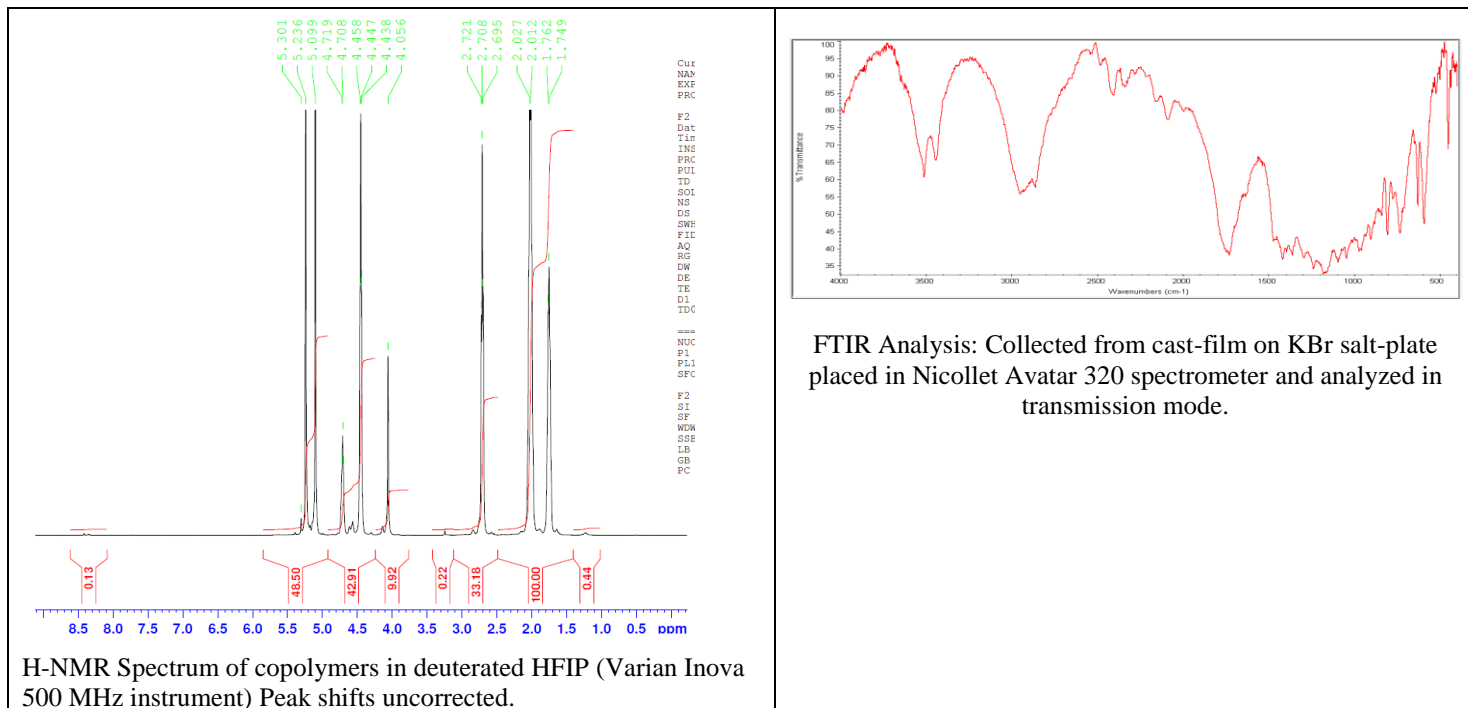


No. AK144

Certificate of Analysis



Product Name: Poly(glycolide)-b-Poly(caprolactone)-b-Poly(ethylene glycol)
-b-Poly(caprolactone)-b-Poly(glycolide) (MW ~ 3,000-7,000-1,000-7,000-3,000 Da)
(Lot #180306JMB-A)

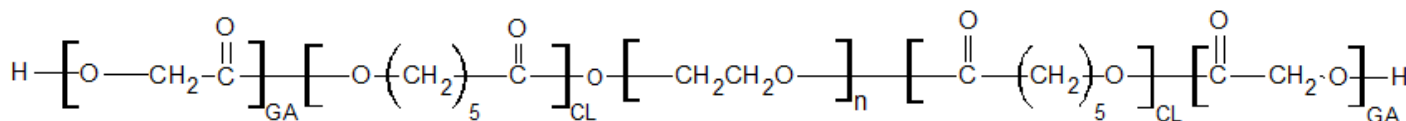


• Inherent Viscosity

Inherent Viscosity: Rheosense Microvisc System, inherent viscosity sample melted 300 °C, quench cooled on dry ice and dissolved in HFIP at 2.0 g/dL. 25° C, data presented as average ± Standard deviation

Polymer	Inherent Viscosity
Pentablock	0.447 ± 0.001 (N = 8)

• Structure of PGA-PCL-PEG-PCL-PGA pentablock copolymers

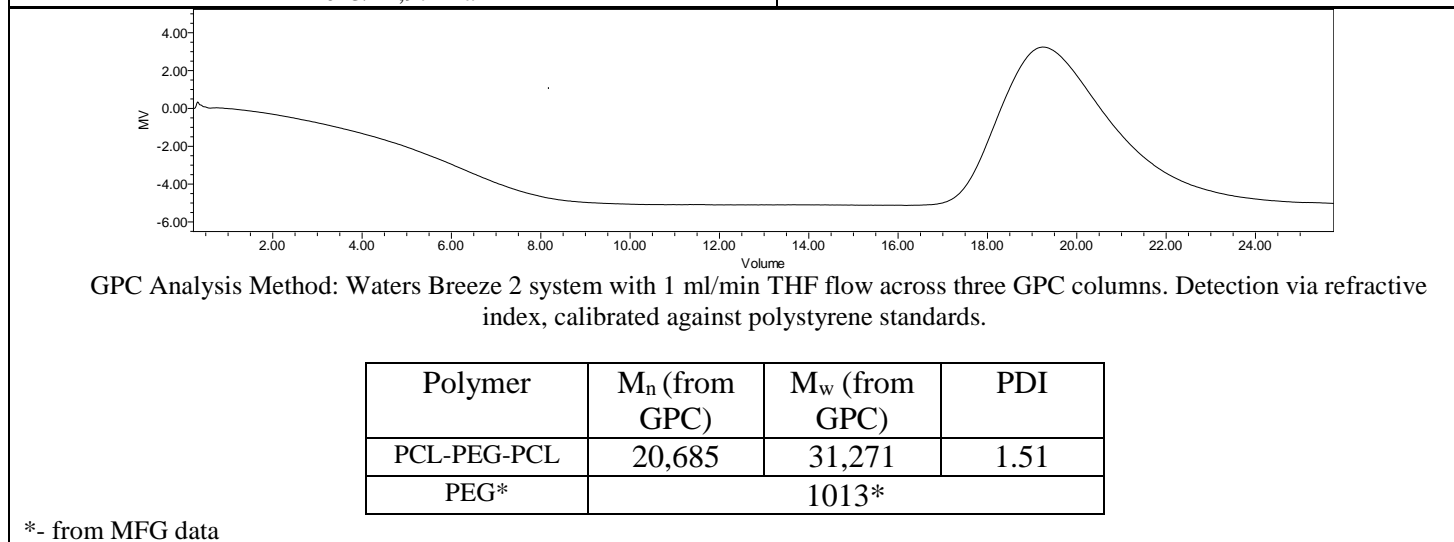
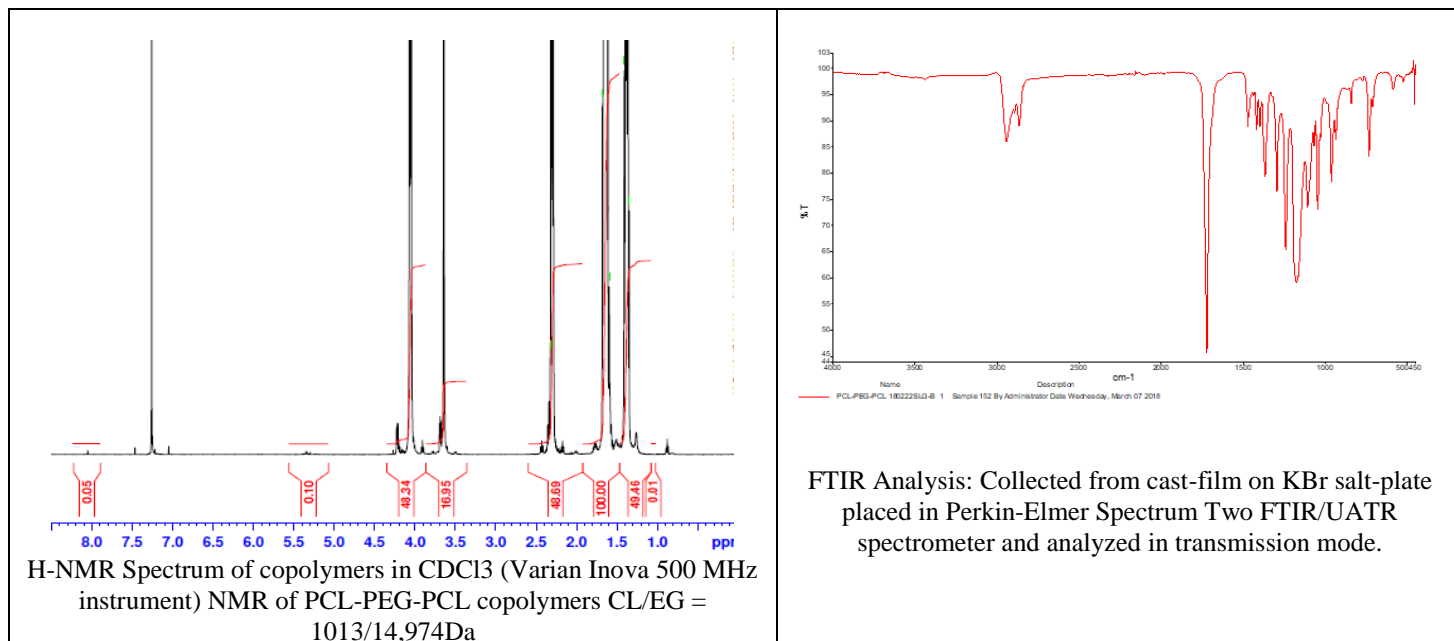


Processing note: Product provided in neat, crystalline form. Requires melting at 300 °C and quenching on dry ice to convert to solublem, amorphous form.

Certificate of Analysis



PRECURSOR: Polycaprolactone-b-Poly(ethylene glycol)-b-Polycaprolactone
(MW ~ 7,000-1,000-7,000 Da) (Lot# 180222SLG-B)



- Structure of PCL-PEG-PCL copolymer**

