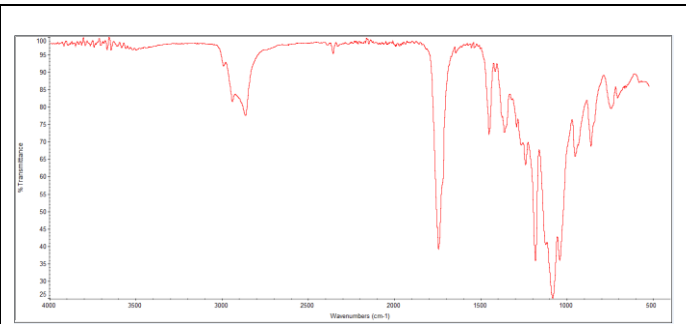
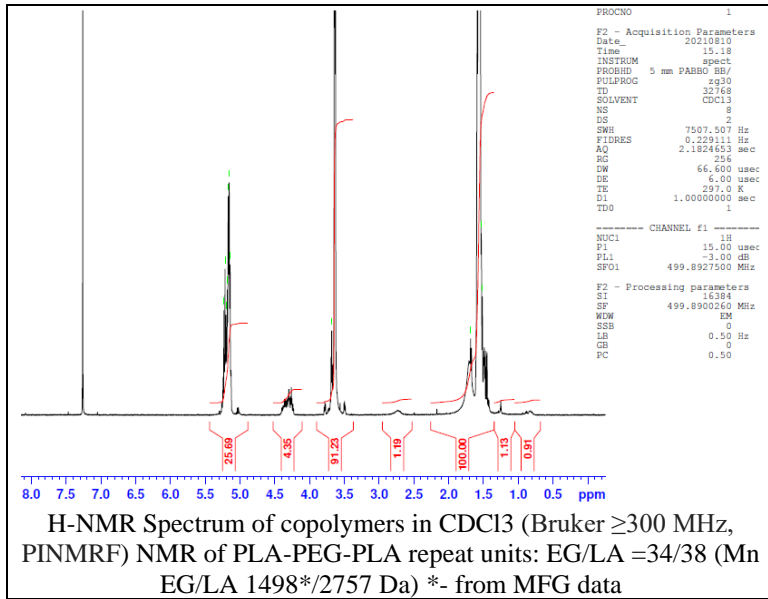


# No. AK138

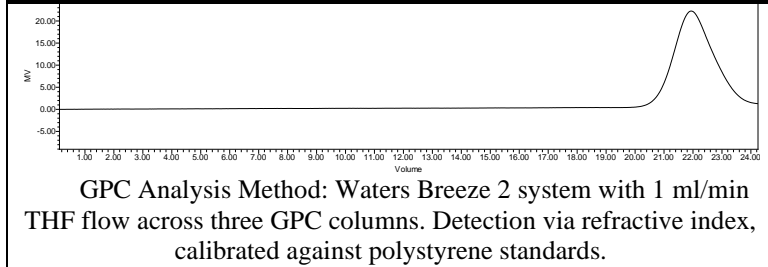
# Certificate of Analysis



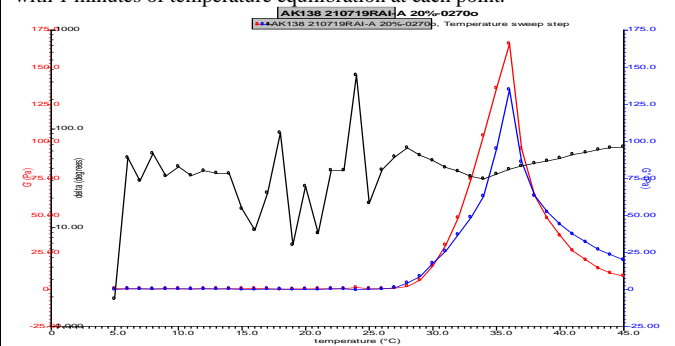
Product Name: Poly(D,L lactide)-b-Poly(ethylene glycol)-b-Poly(D,L lactide)  
(~1500-1500-1500 Da) (Lot#: 210729RAI-A)



FTIR Analysis: Collected from Nicolet Avator 380 spectrometer with ATR Smart Orbit and analyzed in transmission mode.



Rheology performed on AR2000 (TA instruments) with 60mm 2degree cone on 20% w/v polymer in water dissolved over 3 days with stirring at 4°C. Viscosity of solution at 0.1 (sec<sup>-1</sup>) and 5°C was measured (1 minute peak hold 5 second test intervals). Rheology performed by oscillating at constant 6.283 rad/s, 0.1% strain, in increments of 1°C ranging from 5-45°C with 1 minutes of temperature equilibration at each point.



Viscosity 20% w/v solution at 5°C **0.3171 Pa/s**

## • Structure of PLA-PEG-PLA copolymers

