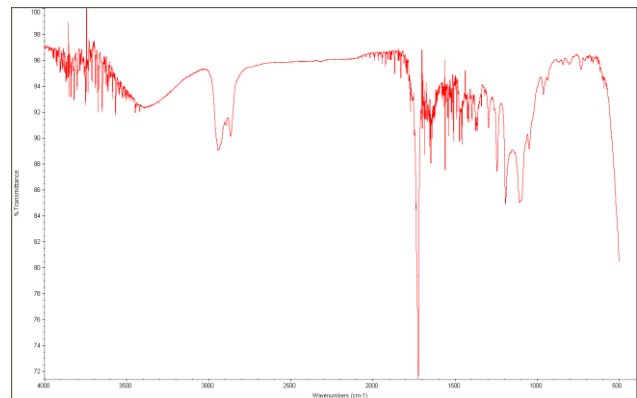
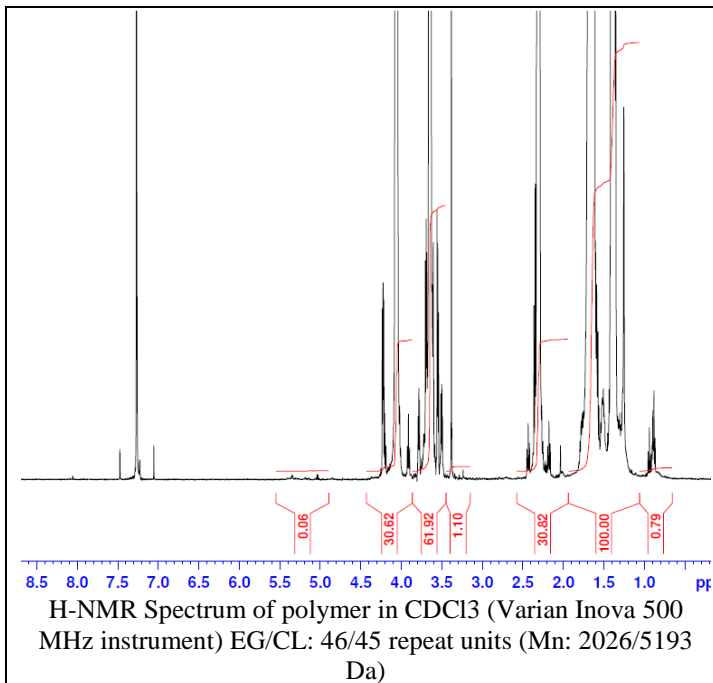


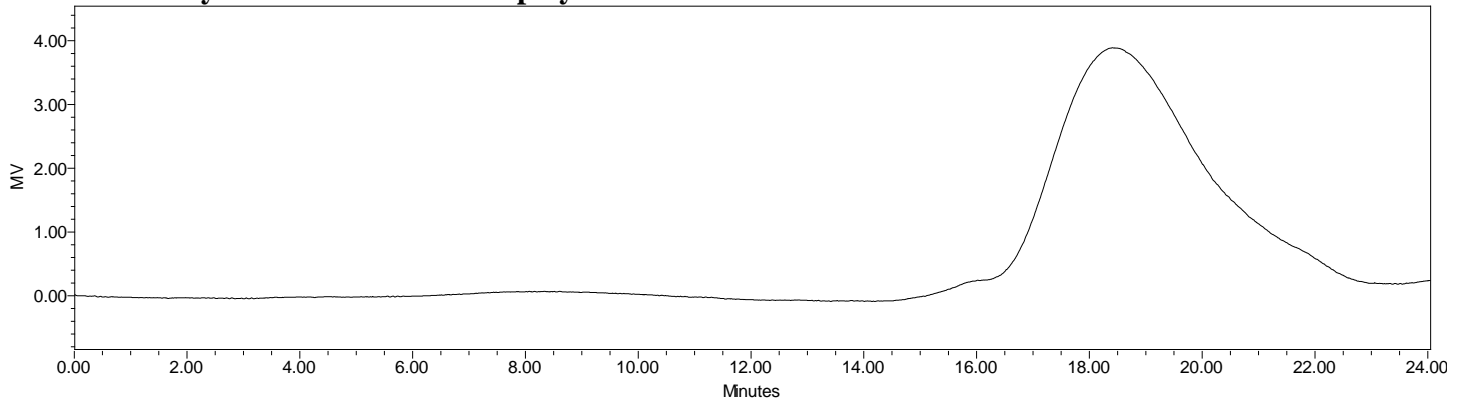
No. AK135 Certificate of Analysis

Product Name: Poly(caprolactone)-Poly(ethylene glycol)-Poly(caprolactone) (M_n : 2500-2000-2500Da) (Lot#: 170505ELH-A)



FTIR Analysis: Collected from cast-film on salt-plate placed in Protégé 460 Spectrometer (Nicolet) and analyzed in transmission E.S.P. mode.

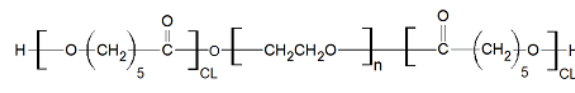
- GPC analysis of PCL-PEG-PCL polymer**



GPC Analysis Method: Breeze 2 system with 1 ml/min THF flow across three GPC columns (Phenomenex). Detection via refractive index, calibrated against polystyrene standards.

Polymer	M_n (from GPC)	M_w (from GPC)	PDI
PCL-PEG-PCL	10404	18031	1.73

- Structure of PCL-PEG-PCL polymer**



Material provided for research use only. Not for human use.

PolySciTech Division of Akina, Inc. | 3495 Kent Avenue, West Lafayette, IN 47906

765-464-0390 | www.polysciotech.com

For research use only.