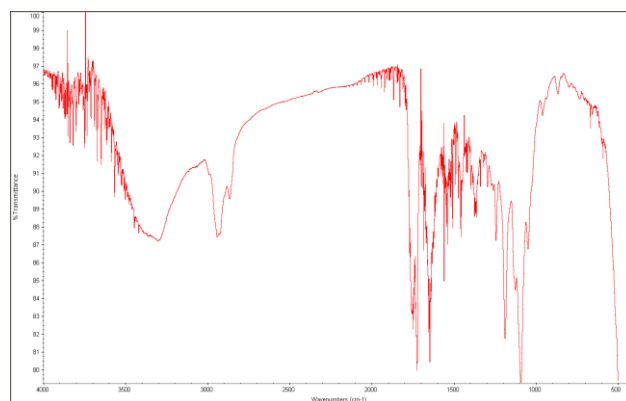
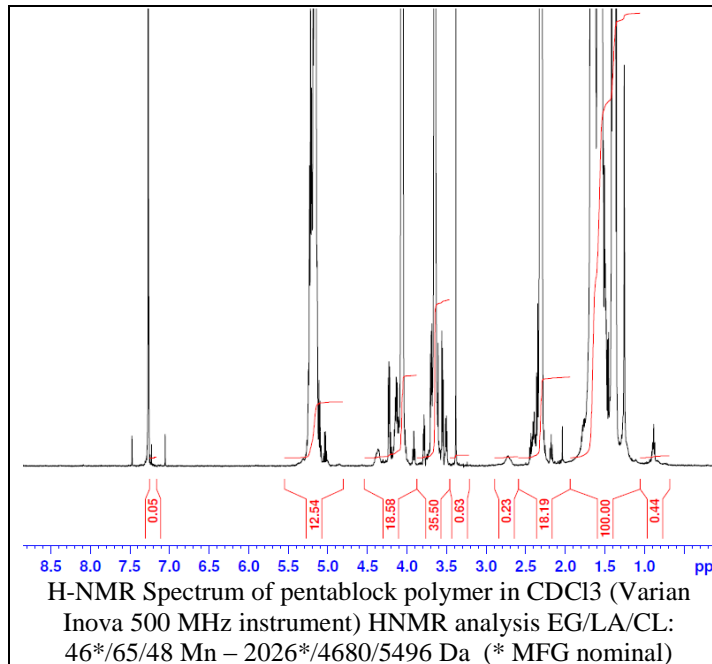


No. AK131

Certificate of Analysis

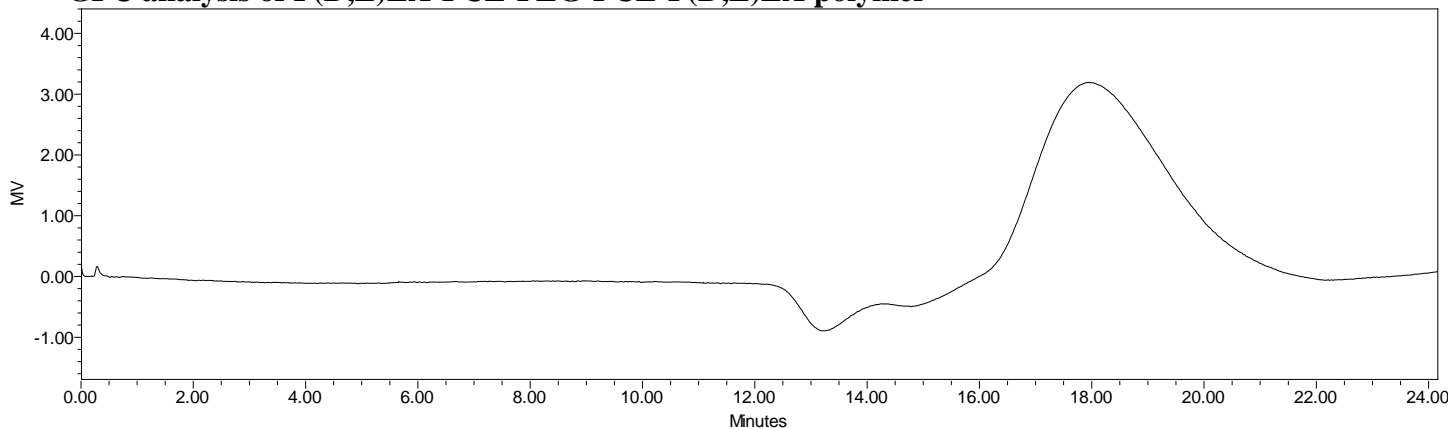


Product Name: Poly((D,L)Lactic acid)-b-Poly(caprolactone)-b-Poly(ethylene glycol)-b-Poly(caprolactone)-b-Poly((D,L)Lactic acid) (M_n : 2500-2500-2000-2500-2500 Da) (Lot#: 170516AHT-B)



FTIR Analysis: Collected from cast-film on salt-plate placed in Protégé 460 Spectrometer (Nicolet) and analyzed in transmission E.S.P. mode.

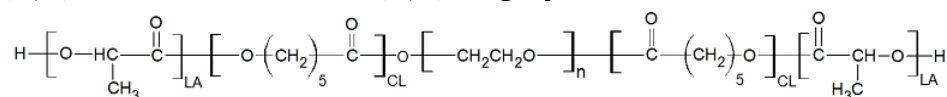
• GPC analysis of P(D,L)LA-PCL-PEG-PCL-P(D,L)LA polymer



GPC Analysis Method: Waters Breeze-2 system with 1 ml/min THF flow across three GPC columns. Detection via refractive index, calibrated against polystyrene standards.

Polymer	Mn (from GPC)	Mw (from GPC)	PDI
PLA-PCL-PEG-PCL-PLA	15,126	22,994	1.52

• Structure of P(D,L)LA-PCL-PEG-PCL-P(D,L)LA polymer



Material provided for research use only. Not for human use.

PolySciTech Division of Akina, Inc. | 3495 Kent Avenue, West Lafayette, IN 47906

765-464-0390 | www.polysciotech.com

For research use only.