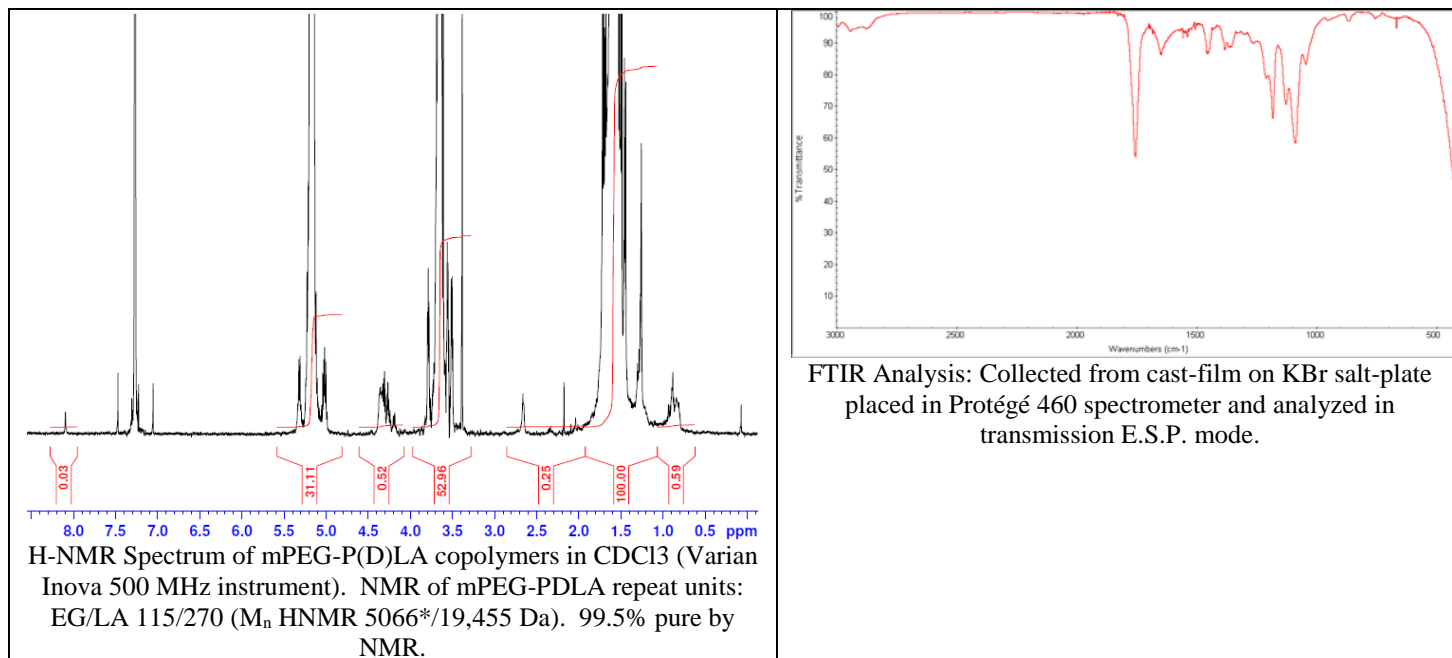


No. AK129

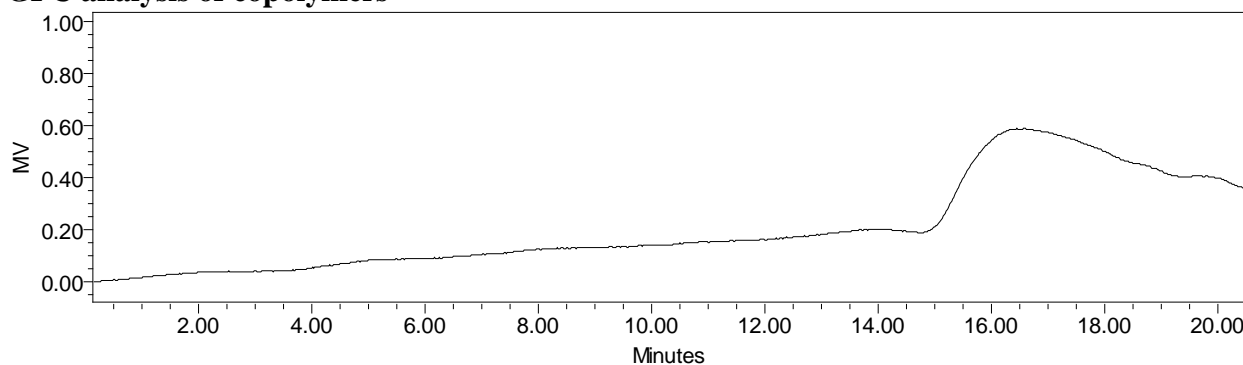
Certificate of Analysis



Product Name: Methoxy Poly(ethylene glycol)-*b*-Poly((D) Lactide) di-block copolymers
(5,000-20,000 Da) (Lot#: 61109JSG-A)



- GPC analysis of copolymers**

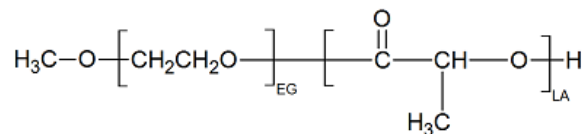


GPC Analysis Method: Waters Breeze 2 system with 1 ml/min DCM flow across three GPC columns (7.8 x 300 mm, mixed porosities). Detection via refractive index, calibrated against polystyrene standards.

Polymer	M _n (from GPC)	M _w (from GPC)	PDI
mPEG-P(D)LA	21,882	40,591	1.85
mPEG	4677*	5272*	1.13*

*- from MFG data

- Structure of mPEG-Poly((D)Lactide) co-polymers**



Material provided for research use only. Not for human use.

PolySciTech Division of Akina, Inc. | 3495 Kent Avenue, West Lafayette, IN 47906

765-464-0390 | www.polysciotech.com

For research use only.