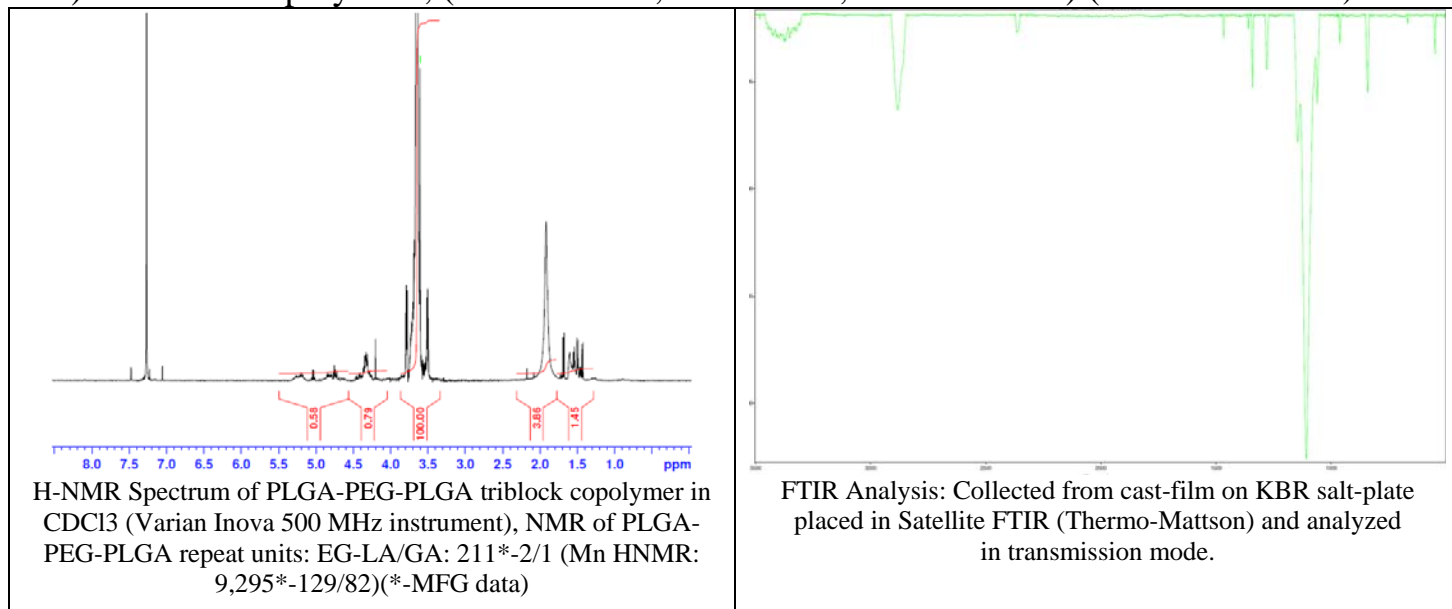
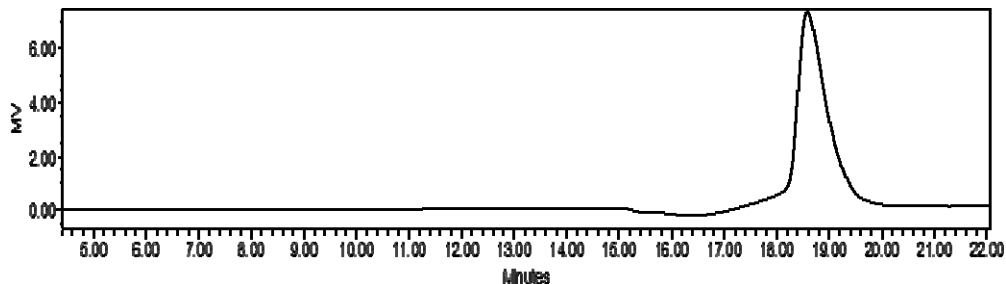


No. AK121 Certificate of Analysis

Product Name: Poly(lactic-co-glycolic acid)-*b*-Poly(ethylene glycol)-*b*-Poly(lactic-co-glycolic acid) Dialcohol copolymers, (Mw ~ 270:10,000:270 Da, LA:GA 75:25) (Lot# 60614BPR-A)



- GPC**



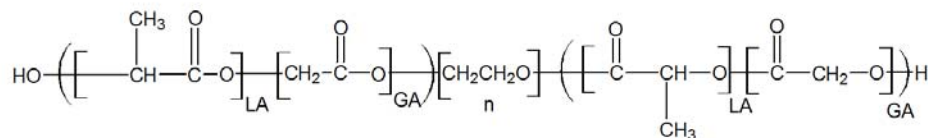
Analysis Method: Waters Breeze 2 system with 1 ml/min DCM flow across three 300x7.6 mm GPC columns (mixed porosities).

Detection via refractive index, calibrated against polystyrene standards.

Polymer	Mn (GPC)	Mw (GPC)	PDI
PLGA-PEG-PLGA Dialcohol	11,252	14,994	1.33
PEG precursor	Mn - 9,311*		

* - MFG provided data.

- Structure of PLGA-PEG-PLGA Dialcohol copolymer**



Material provided for research use only. Not for human use.

PolySciTech Division of Akina, Inc. | 3495 Kent Avenue, West Lafayette, IN 47906
 765-464-0390 | www.polysciotech.com

For research use only.