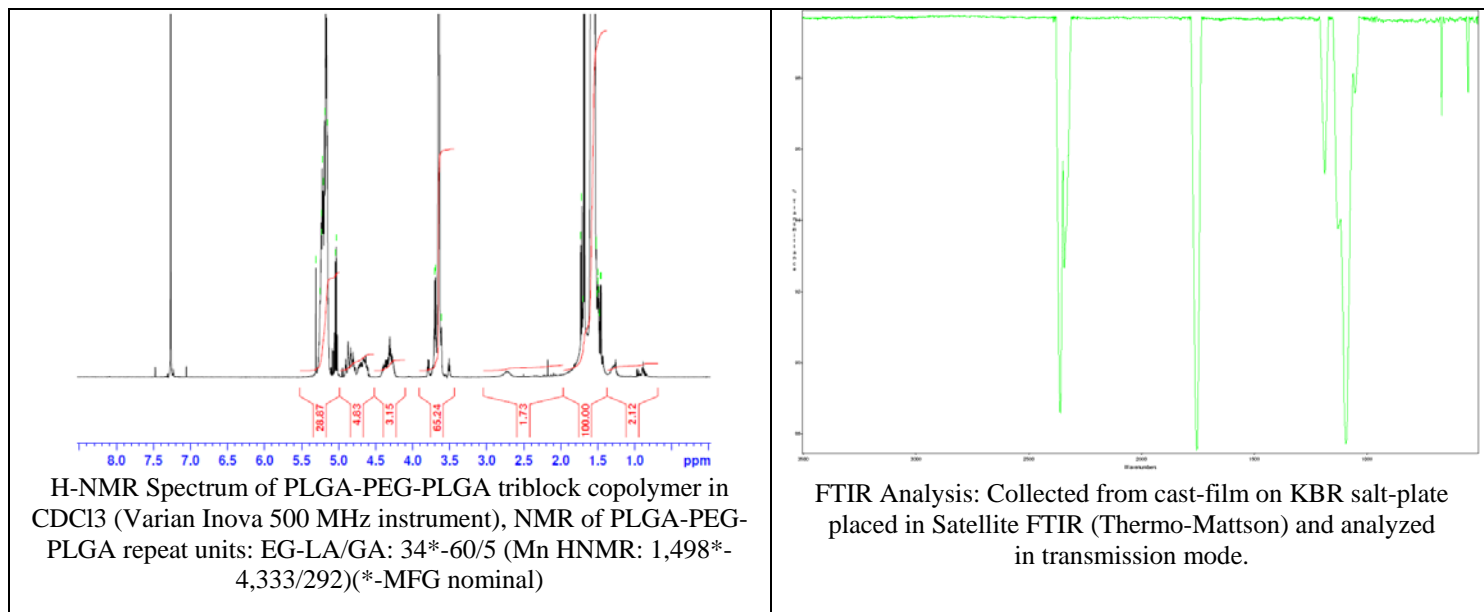
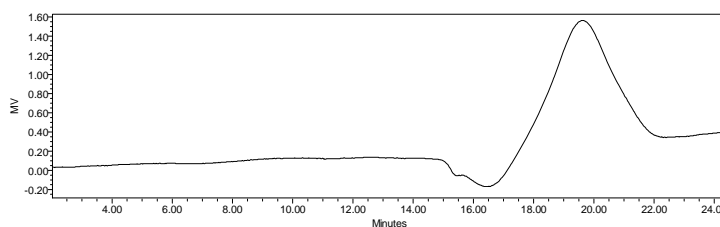


No. AK120 Certificate of Analysis

Product Name: Poly(lactic-co-glycolic acid)-*b*-Poly(ethylene glycol)-*b*-Poly(lactic-co-glycolic acid) copolymers, (Mw~2,250:1,500:2,250 Da, LA:GA 15:1) (Lot# 60608MMH-A)



- **GPC**

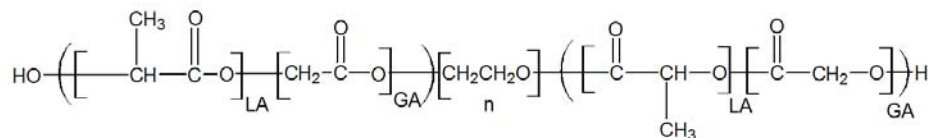


Analysis Method: Waters Breeze 2 system with 1 ml/min DCM flow across two Phenogel 5 μ m columns and one PLgel Resipore column (Agilent). Detection via refractive index, calibrated against polystyrene standards.

Polymer	Mn (GPC)	Mw (GPC)	PDI
PLGA-PEG-PLGA	6840	11,627	1.70

*- MFG provided data.

- **Product is water insoluble**
- **Structure of PLGA-PEG-PLGA copolymer**



Material provided for research use only. Not for human use.

PolySciTech Division of Akina, Inc. | 3495 Kent Avenue, West Lafayette, IN 47906

765-464-0390 | www.polysciotech.com

For research use only.